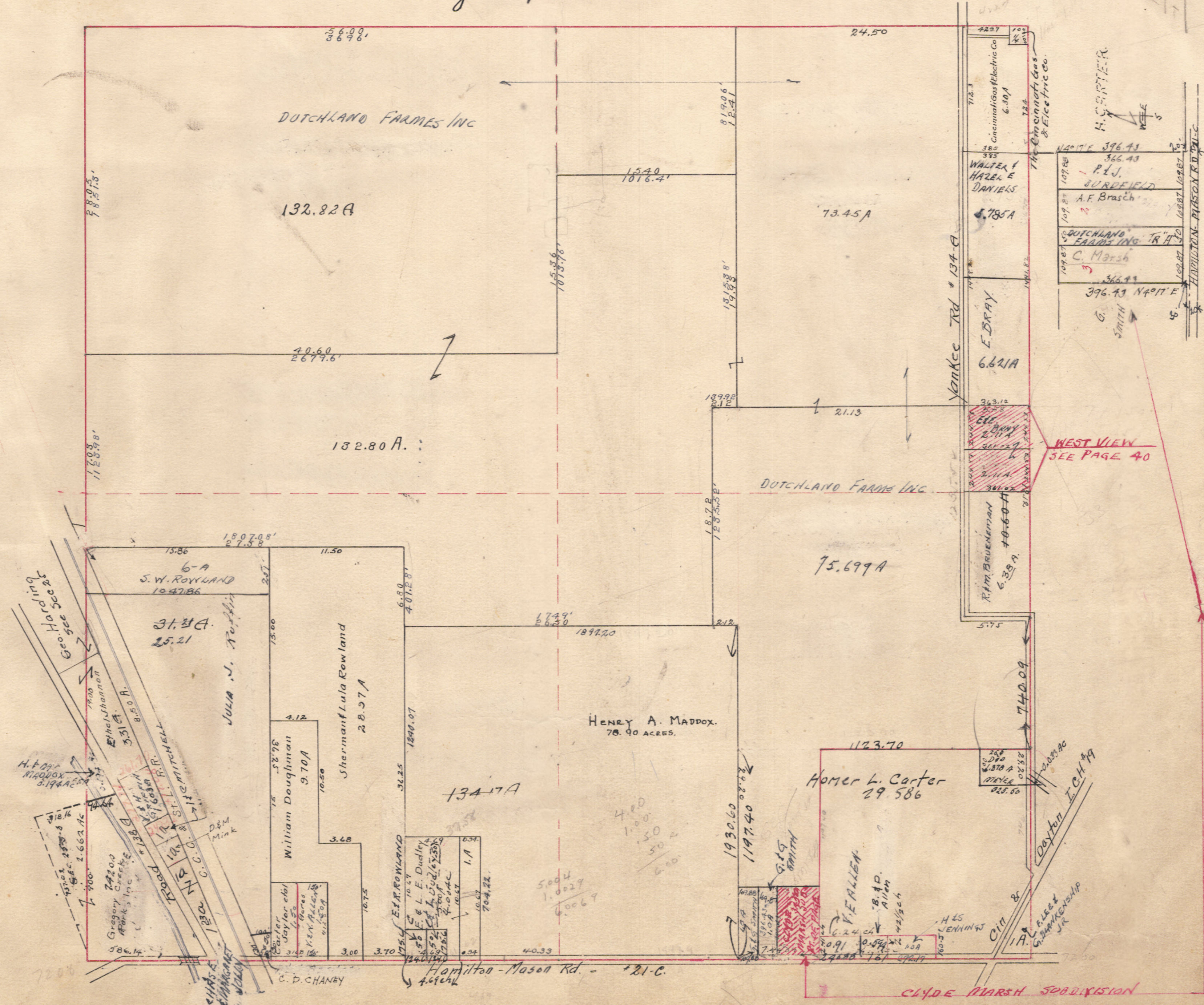


Liberty Twp. Sec. 19. T3. R3.



H. CARTER  
 N 1/2 E 1/2  
 W 1/2 E 1/2  
 S 1/2 E 1/2  
 CLYDE E. MARSH SUBN  
 SEC. 19. T3. R3. LIBERTY TWP.  
 3.455 A. MAY-1954

Geo. Harding  
 See Sec 22

H.F. O'NEAL  
 1944 ACRES

CLYDE MARSH SUBDIVISION