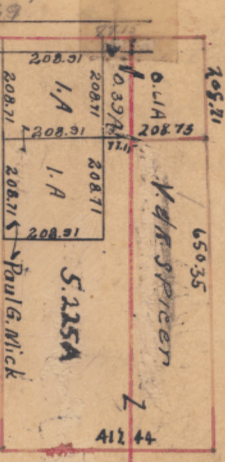


See Sec. 16-2-3

ST. CLAIR TWP.
S. 21 T. 2 R. 3

488 Pauline



Cherokee Park Improvement Assn 16.05 A.

Bodie Baker

William H. Noble

See New Miami

West EIKTON #26-A 79.95

CITY VIEW HEIGHTS
FLATTED SEETRAGE-
#48 & 49

682.06 ACRES
Axel Madsen ETAL

HAMILTON
Hamilton-Eaton Rd. #1, 2, 3, 4, 5
Cort. DIST.
3.70 A. Exempt.

GREAT MIAMI RIVER

NEW MIAMI RIVER

NEW MIAMI CORP LINE

The Miami Conservancy District
29.80 A.

See Hamilton
Ward 3

See Fairfield Twp. Page 44

John E. Bonham
1.00 ATR.
B. 09 A.

101.530
3.000
98.530

1.000
1.000
2.000

466

466

466

466

466

466

466

466

466

466

466

466

466

466

466

466

466

466

466

466

466

466

466

466

466

466

466

466

466

466

466

466

466

466

466

466

466

466

466

466

466

466

466

466

466

466

466

466

466

466

466

466

466

466

466

466

466

466

466

466

466

466

466

466

466

466

466

466

466

466

466

466

466

466

466

466

466

466

466

466

466

466

466

466

466

466

466

466

466

466

466

466

466

466

466

466

466

466

466

466

466

466

466

466

466

466

466

466

466

466

466

466

466

466

466

466

466

466

466

466

466

466

466

466

466

466

466

466

466

466

466

466

466

466

466

466

466

466

466

466

466

466

466

466

466

466

466

466

466

466

466

466

466

466

466

466

466

466

466

466

466

466

466

466

466

466

466

466

466

466

466

466

466

466

466

466

466

466

466

466

466

466

466

466

466

466

466

466

466

466

466

466

466

466

466

466

466

466

466

466

466

466

466

466

466

466

466

466

466

466

466

466

466

466

466

466

466

466

466

466

466

466

466

466

466

466

466

466

466

466

466

466

466

466

466

466

466

466

466

466

466

466

466

466

466

466

466

466

466

466

466

466

466

466

466

466

466

466

466

466

466

466

466

466

466

466

466

466

466

466

466

466

466

466

466

466

466

466

466

466

466

466

466

466

466

466

466

466

466

466

466

466

466

466

466

466

466

466

466

466

466

466

466

466

466