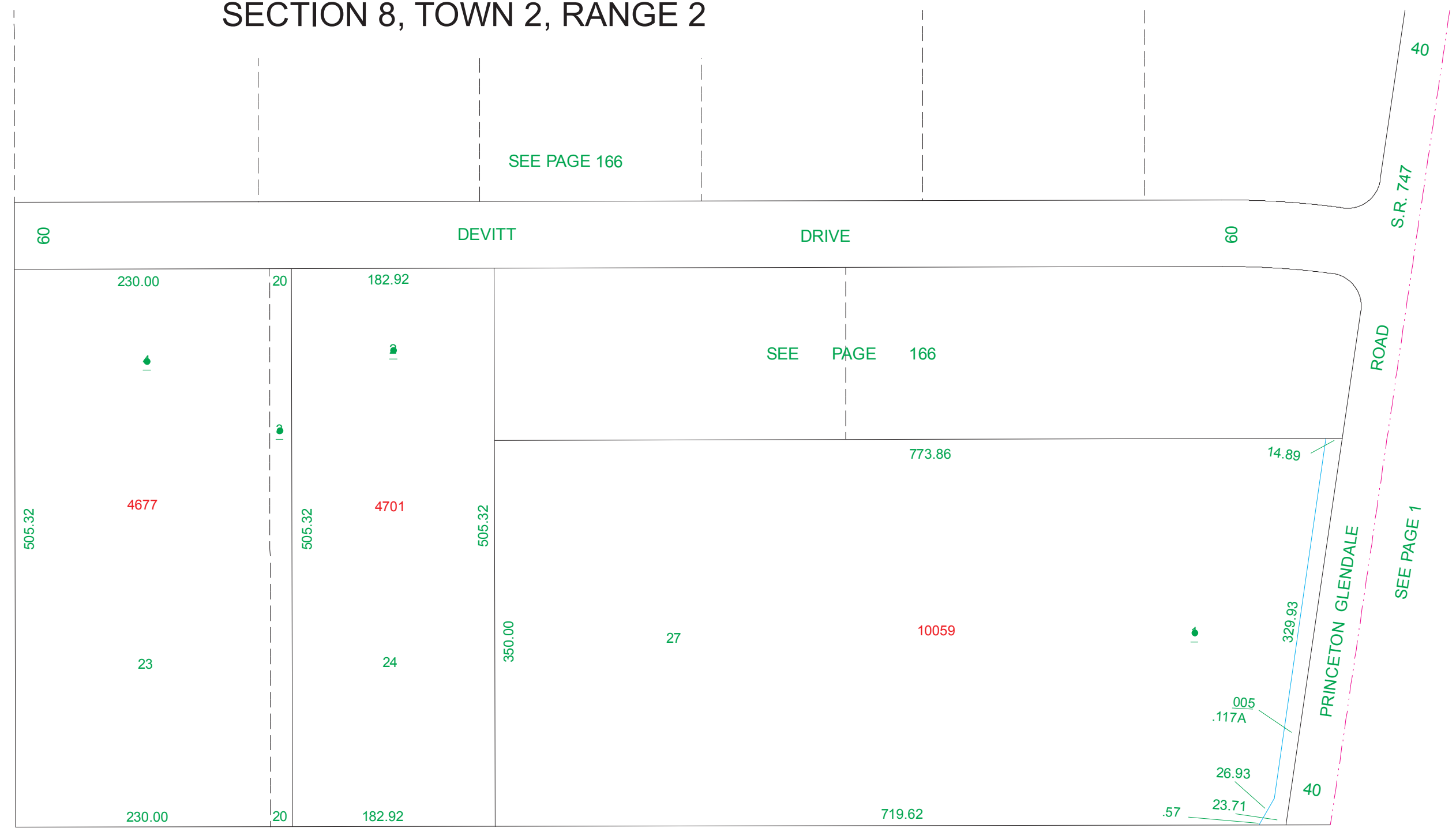


NEYER INTERSTATE INDUSTRIAL PARK

UNION TOWNSHIP
SECTION 8, TOWN 2, RANGE 2

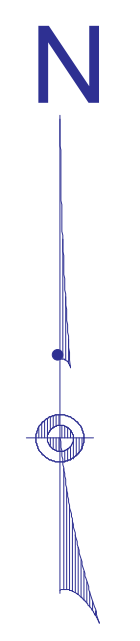
183.000

HOUSE NUMBERS



SEE PAGE 6

SEE PAGE 6



SCALE: 1"=100'
TAXING DISTRICT: M5620
REVISED 8/29/96