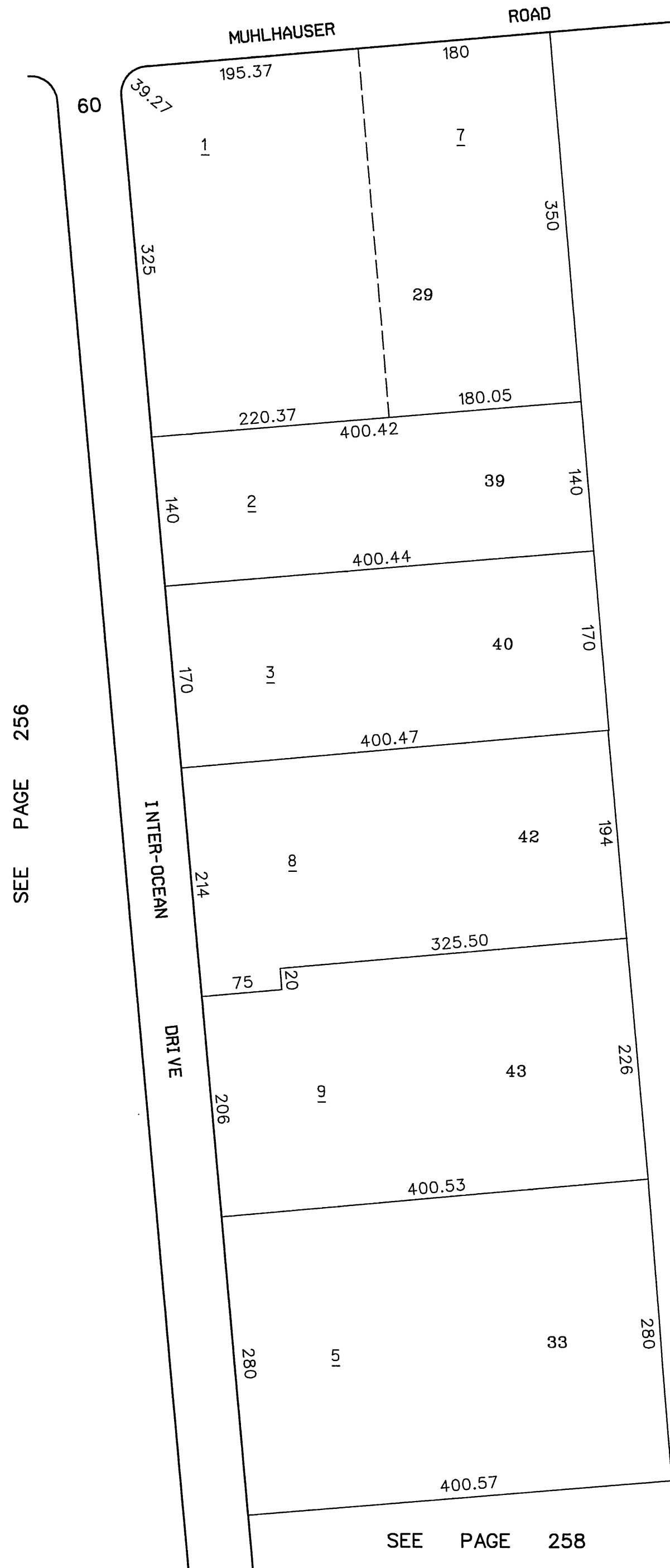


COMMERCE PARK TRI-COUNTY
WEST CHESTER TOWNSHIP
SECTION 8, TOWN 2, RANGE 2

259.000



SCALE: 1"=100'
TAXING DISTRICT: M5620
REVISED 5/31/96

SEE PAGE 50

SEE PAGE 258

SEE PAGE 256