



BCEO Tax Map Department
Administration Building
130 High Street
Hamilton, Ohio 45011
[Tel] 513.887.3500 [Fax] 513.887.3633
WWW.BCEO.ORG



PLOT DATE: 04/14/2009

VILLAS OF HERITAGE GREEN

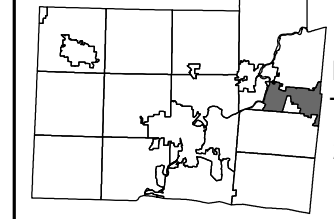
MONROE CORP

Section 24, Town 3, Range 3

BUTLER COUNTY, OHIO

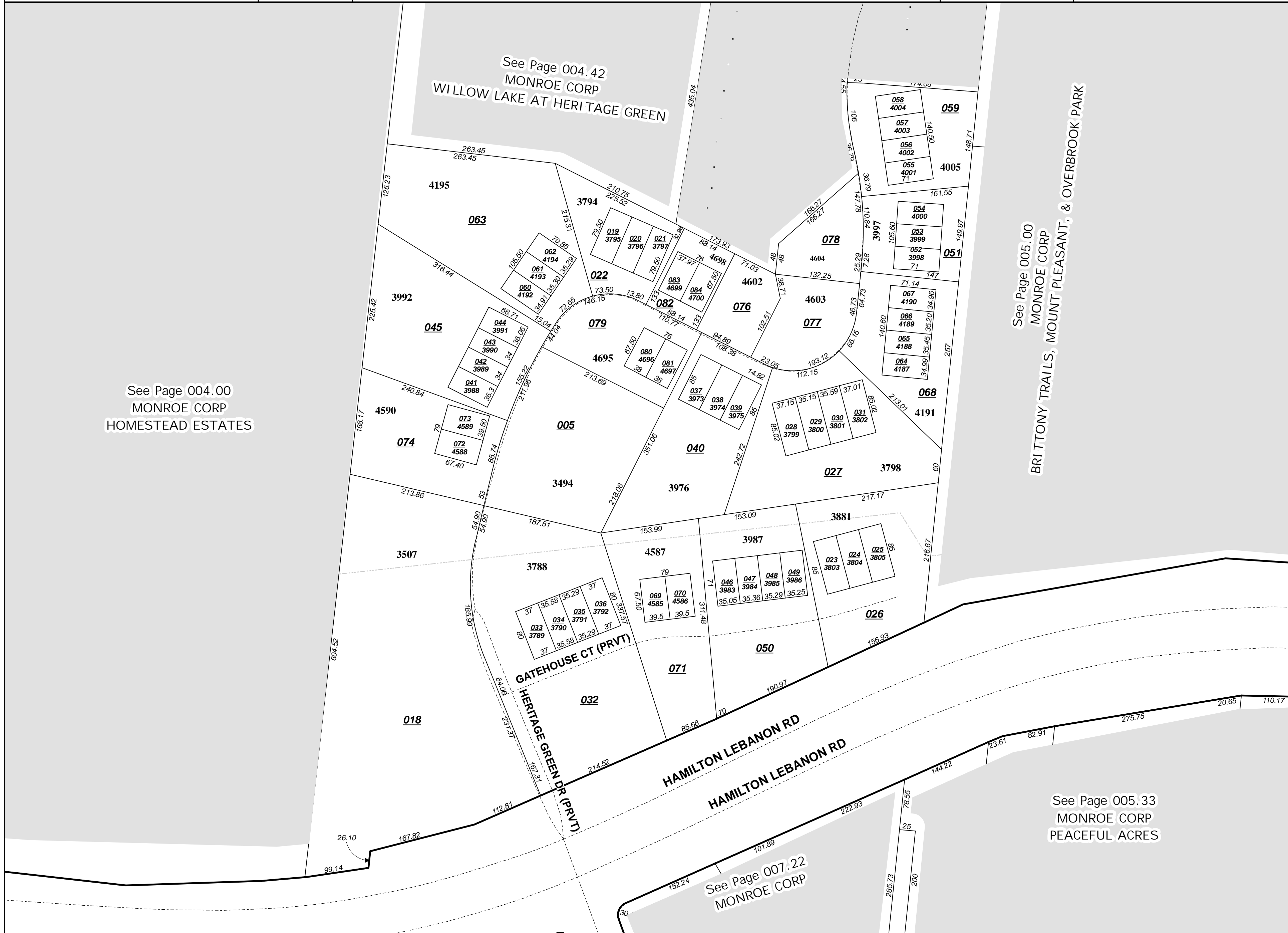
FOR INFORMATIONAL PURPOSES ONLY. NOT INTENDED FOR USE AS A SURVEY.

Scale: 1"=100'



Revised Date: 1/12/2004
Taxing District: C1800
2nd Tax Dist: NONE

004440



See Page 004.42
MONROE CORP
WILLOW LAKE AT HERITAGE GREEN

See Page 004.00
MONROE CORP
HOMESTEAD ESTATES

See Page 005.00
MONROE CORP
BRITTONY TRAILS, MOUNT PLEASANT, & OVERBROOK PARK

See Page 005.33
MONROE CORP
PEACEFUL ACRES

See Page 007.22
MONROE CORP