



BCEO Tax Map Department
Administration Building
130 High Street
Hamilton, Ohio 45011
[Tel] 513.887.3500 [Fax] 513.887.3633
WWW.BCEO.ORG



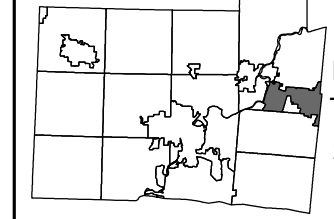
PLOT DATE: 04/27/2009

OVERBROOK
MONROE CORP
Section 18, Town 3, Range 3
BUTLER COUNTY, OHIO

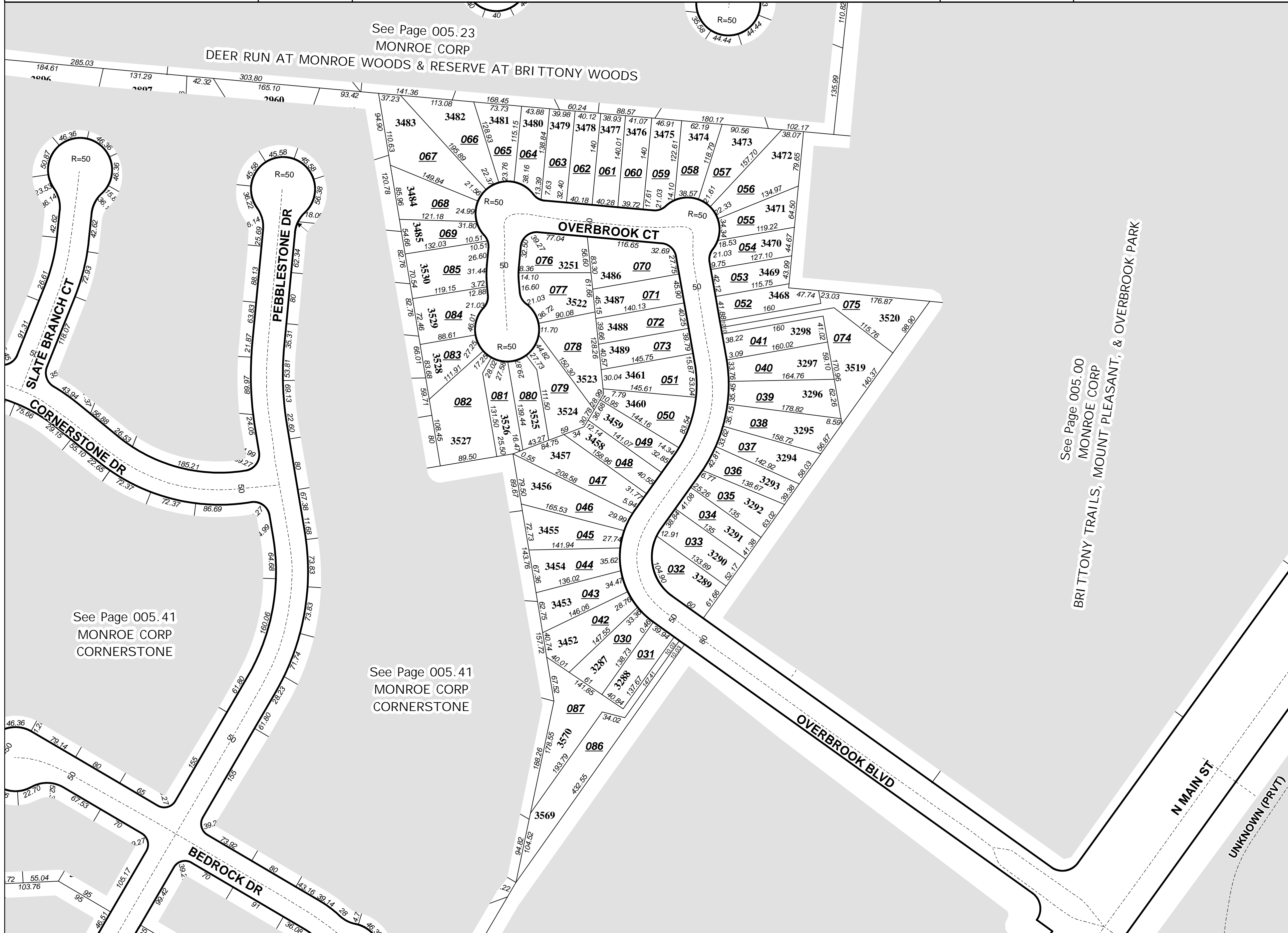
FOR INFORMATIONAL PURPOSES ONLY. NOT INTENDED FOR USE AS A SURVEY.

Scale: 1"=100'

005420



Revised Date: 5/8/2000
Taxing District: C1800
2nd Tax Dist: NONE



See Page 005.23
MONROE CORP
DEER RUN AT MONROE WOODS & RESERVE AT BRITTONY WOODS

See Page 005.41
MONROE CORP
CORNERSTONE

See Page 005.41
MONROE CORP
CORNERSTONE

See Page 005.00
MONROE CORP
BRITTONY TRAILS, MOUNT PLEASANT, & OVERBROOK PARK