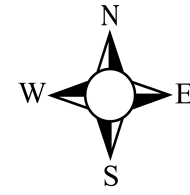




BCEO Tax Map Department
Administration Building
130 High Street
Hamilton, Ohio 45011
[Tel] 513.887.3500 [Fax] 513.887.3633
WWW.BCEO.ORG



PLOT DATE: 12/17/2009

REILY TWP

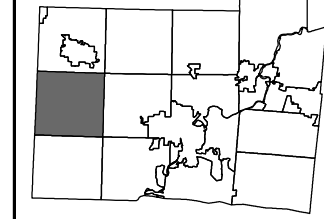
Section 26, Town 4, Range 1

BUTLER COUNTY, OHIO

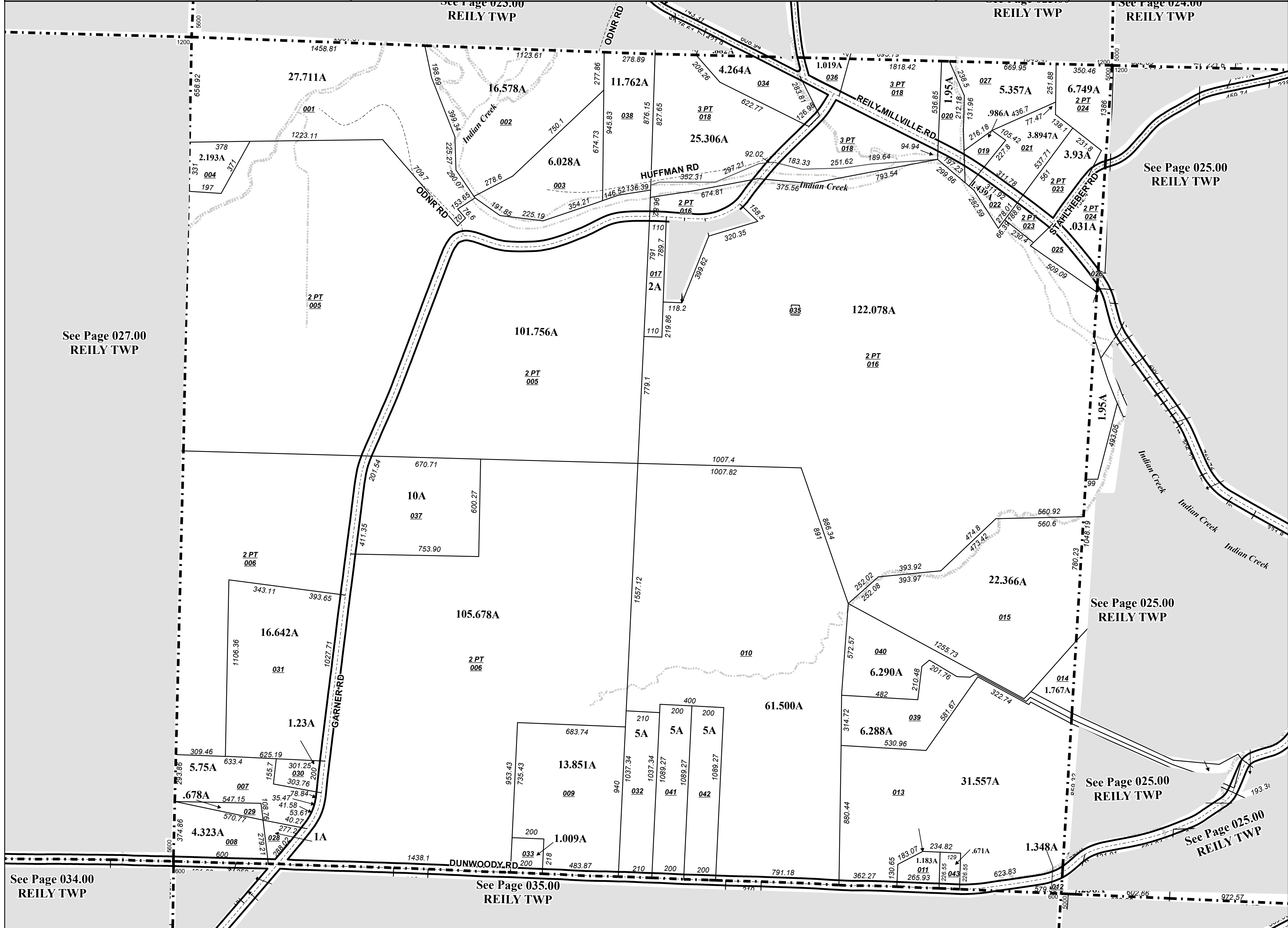
FOR INFORMATIONAL PURPOSES ONLY. NOT INTENDED FOR USE AS A SURVEY.

Scale: 1"=400'

026000



Revised Date: 12/16/2009
Taxing District: J4310
2nd Tax Dist: NONE



See Page 034.00
REILY TWP

See Page 035.00
REILY TWP

See Page 027.00
REILY TWP

See Page 025.00
REILY TWP

See Page 025.00
REILY TWP

See Page 025.00
REILY TWP

See Page 025.00
REILY TWP

See Page 024.00
REILY TWP

See Page 023.00
REILY TWP