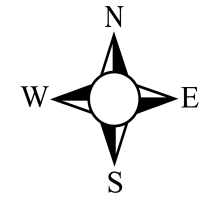


Butler County Engineer's Office
BCEO Tax Map Department
Administration Building
130 High Street
Hamilton, Ohio 45011
[Tel] 513.887.3500 [Fax] 513.887.3633
WWW.BCEO.ORG



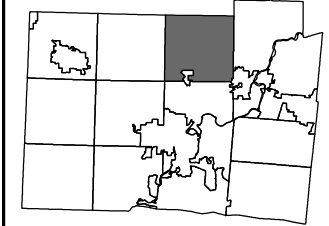
PLOT DATE: 11/25/2008

FORT HAMILTON ESTATES
WAYNE TWP
Section 31, Town 3, Range 3
BUTLER COUNTY, OHIO

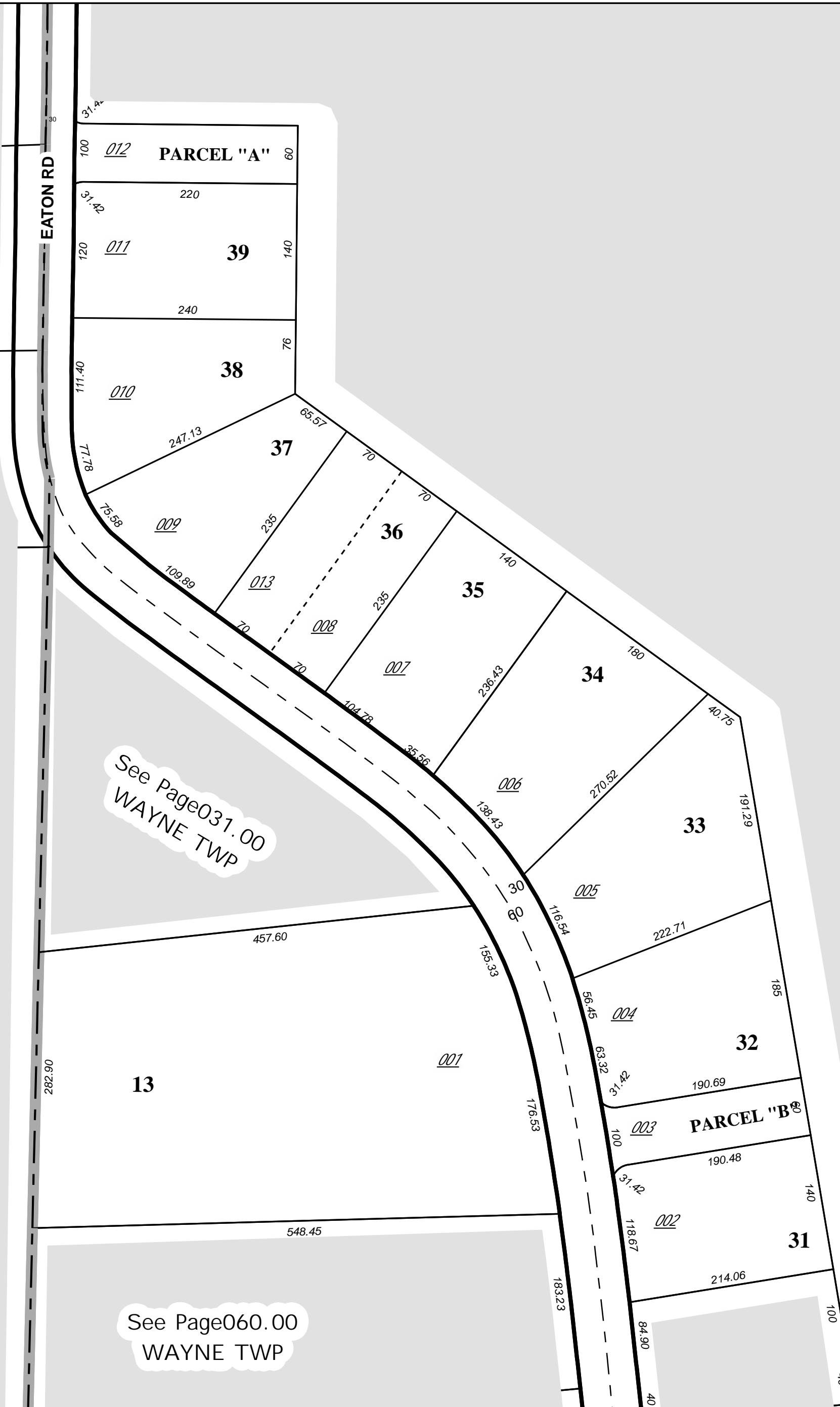
FOR INFORMATIONAL PURPOSES ONLY. NOT INTENDED FOR USE AS A SURVEY.

Scale: 1"=100'

061000



Revised Date: 11/24/2008
Taxing District: N6120
2nd Tax Dist: NONE



See Page036.00
MILFORD TWP

See Page031.00
WAYNE TWP

See Page031.00
WAYNE TWP

See Page060.00
WAYNE TWP