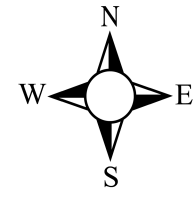




BCEO Tax Map Department
 Administration Building
 130 High Street
 Hamilton, Ohio 45011
 [Tel] 513.887.3500 [Fax] 513.887.3633
 WWW.BCEO.ORG



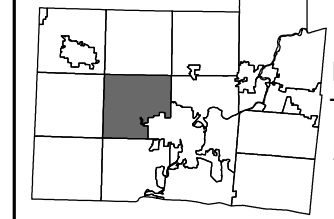
PLOT DATE: 4/29/2009

ENGEL PARK & HERZIG'S SUB
HANOVER TWP
 Section 20, Town 4, Range 2
 BUTLER COUNTY, OHIO

FOR INFORMATIONAL PURPOSES ONLY. NOT INTENDED FOR USE AS A SURVEY.

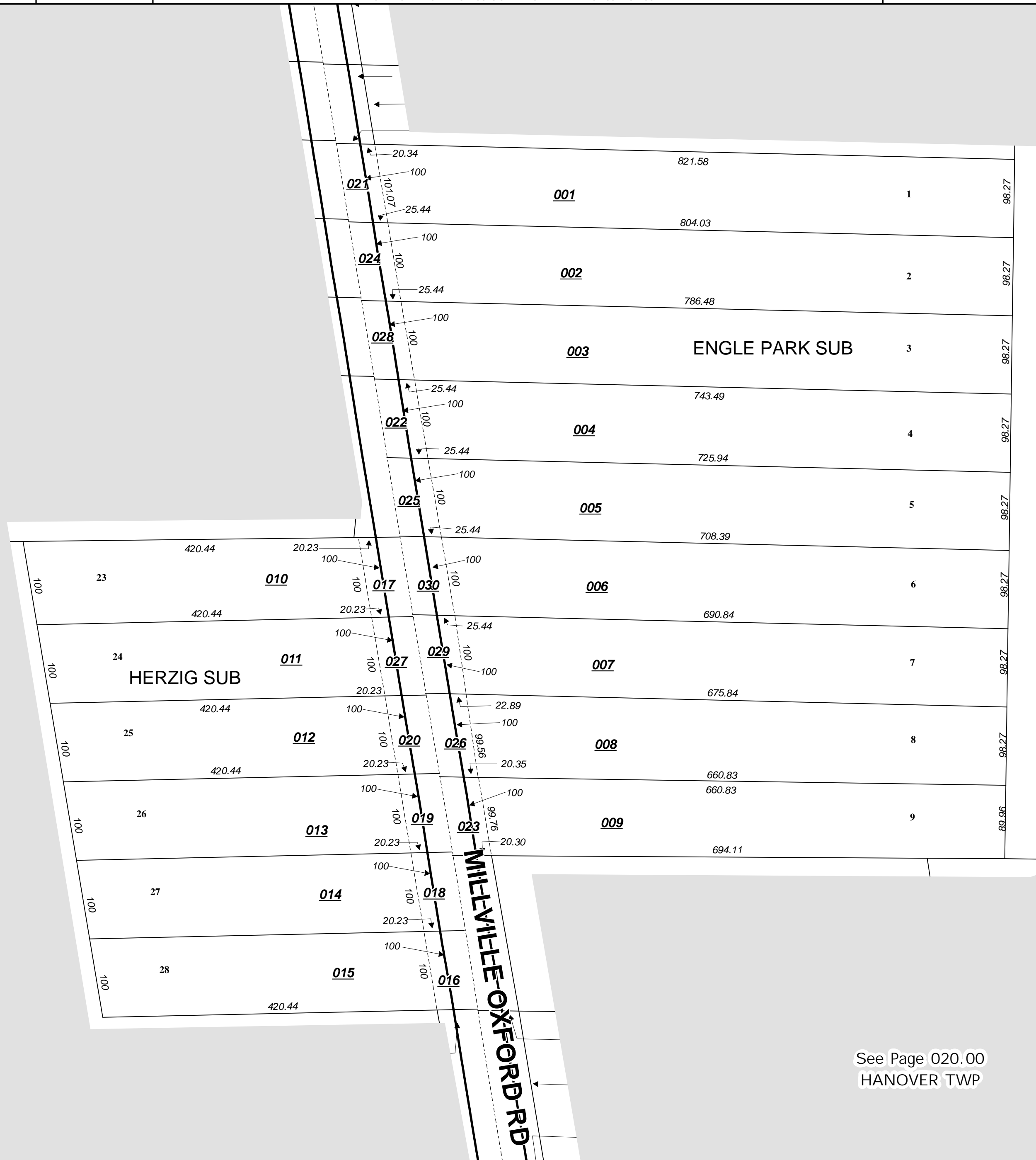
Scale: 1"=100'

070000



Revised Date: 2/15/1996
 Taxing District: B1020
 2nd Tax Dist: NONE

See Page 020.00
 HANOVER TWP



See Page 020.00
 HANOVER TWP