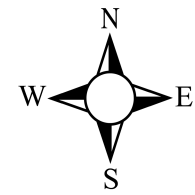




BCEO Tax Map Department
Administration Building
130 High Street
Hamilton, Ohio 45011
[Tel] 513.887.3500 [Fax] 513.887.3633
WWW.BCEO.ORG



PLOT DATE: 01/07/2009

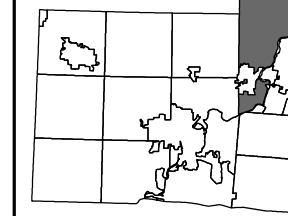
MILTONVILLE & KNOLL PLAINS

MADISON TWP
Section 30, Town 2, Range 4
BUTLER COUNTY, OHIO

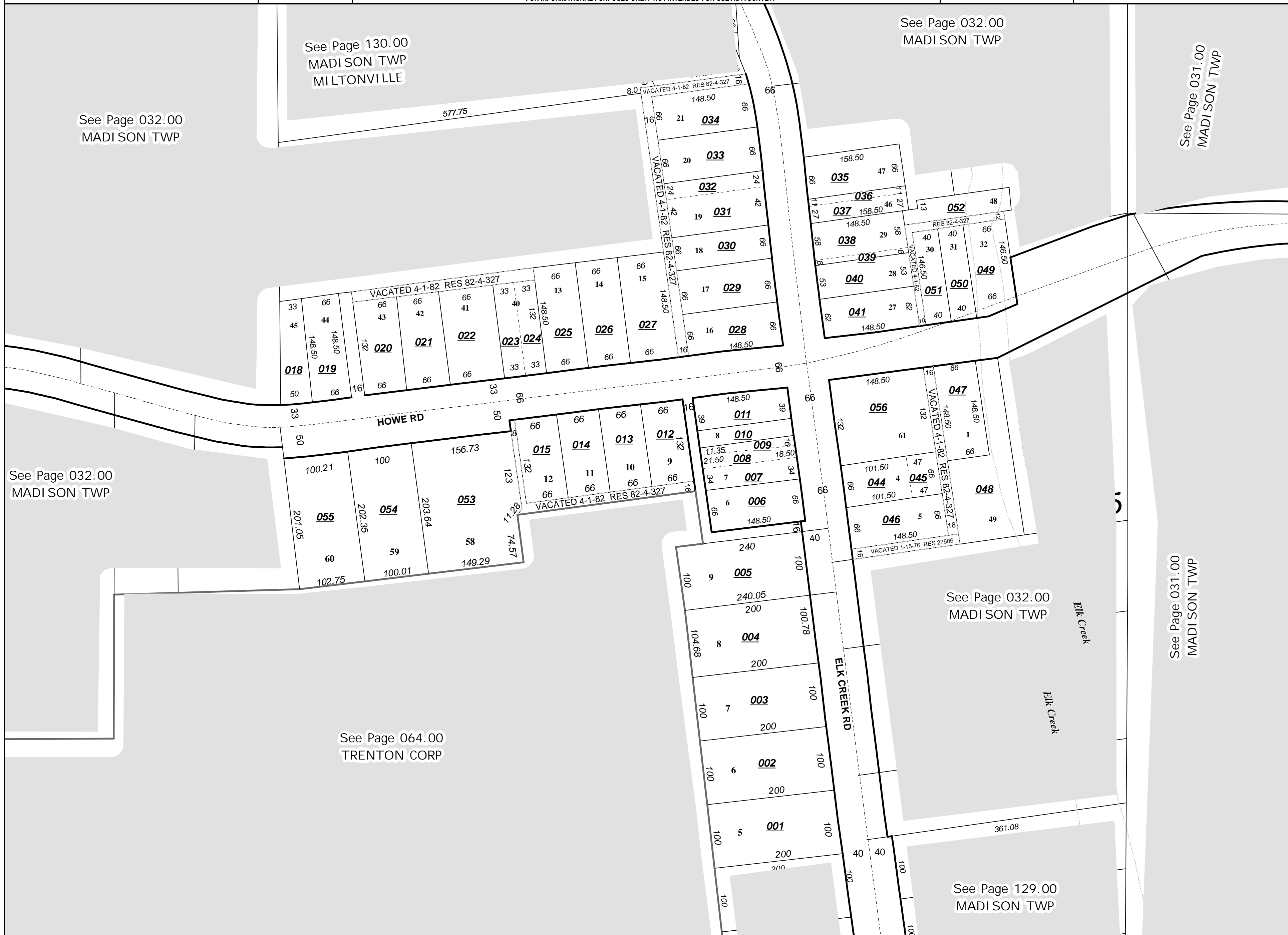
FOR INFORMATIONAL PURPOSES ONLY. NOT INTENDED FOR USE AS A SURVEY.

Scale: 1"=100'

131000



Revised Date: 4/8/1998
Taxing District: E2240
2nd Tax Dist: NONE



See Page 032.00
MADISON TWP

See Page 032.00
MADISON TWP

See Page 130.00
MADISON TWP
MILTONVILLE

See Page 064.00
TRENTON CORP

See Page 032.00
MADISON TWP

See Page 031.00
MADISON TWP

See Page 032.00
MADISON TWP

See Page 031.00
MADISON TWP

See Page 129.00
MADISON TWP