



BCEO Tax Map Department
Administration Building
130 High Street
Hamilton, Ohio 45011
[Tel] 513.887.3500 [Fax] 513.887.3633
WWW.BCEO.ORG



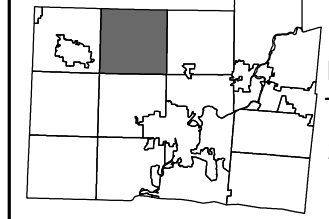
PLOT DATE: 12/09/2008

**ELIZABETH HEIGHTS
MILFORD TWP**
Section 34, Town 5, Range 2
BUTLER COUNTY, OHIO

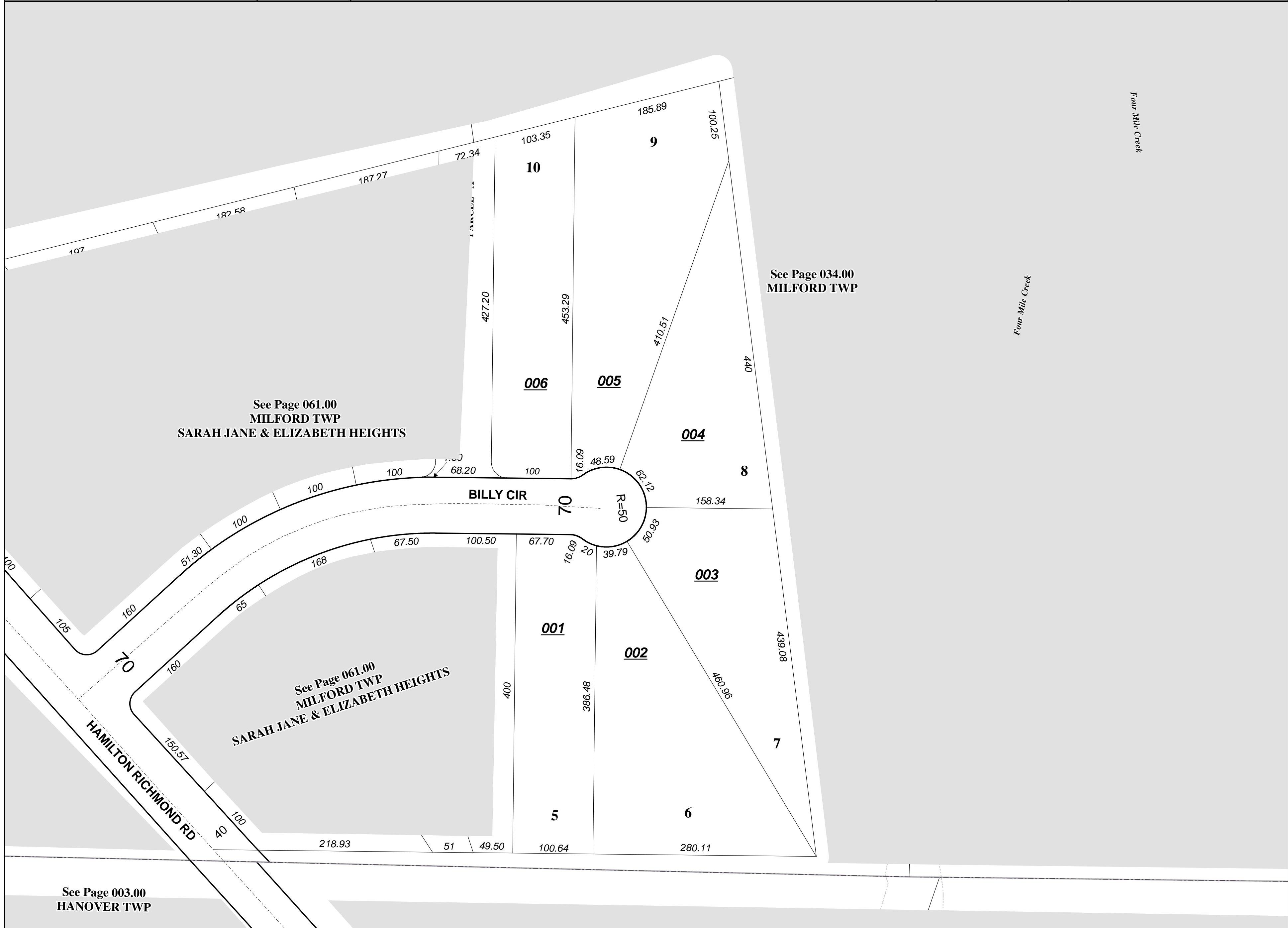
FOR INFORMATIONAL PURPOSES ONLY. NOT INTENDED FOR USE AS A SURVEY.

Scale: 1"=80'

062000



Revised Date: 3/13/1991
Taxing District: F2610
2nd Tax Dist: NONE



See Page 003.00
HANOVER TWP