



BCEO Tax Map Department  
Administration Building  
130 High Street  
Hamilton, Ohio 45011  
[Tel] 513.887.3500 [Fax] 513.887.3633  
WWW.BCEO.ORG



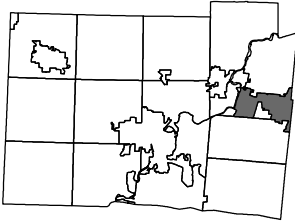
PLOT DATE: 04/14/2009

**TOD HUNTER HEIGHTS**  
**MONROE CORP**  
**Section 13, Town 2, Range 4**  
**BUTLER COUNTY, OHIO**

FOR INFORMATIONAL PURPOSES ONLY. NOT INTENDED FOR USE AS A SURVEY.

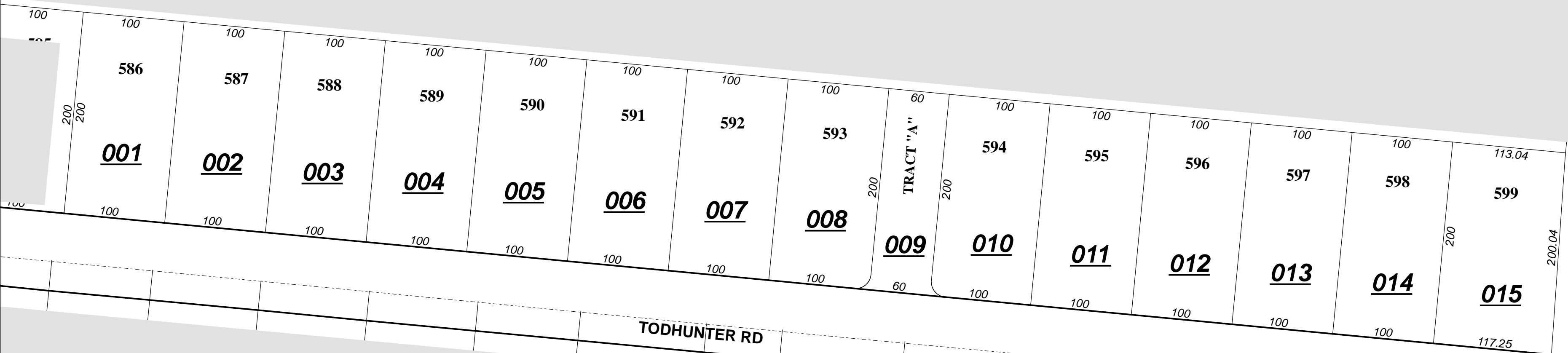
Scale: 1"=80'

**002340**



Revised Date: 5/31/1996  
Taxing District: C1800  
2nd Tax Dist: NONE

See Page 002.00  
MONROE CORP



TODHUNTER RD

See Page 005.00  
MONROE CORP

BRITTONY TRAILS, MOUNT PLEASANT, & OVERBROOK PARK

