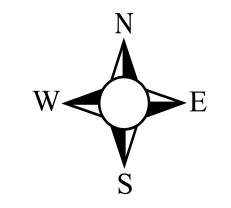




BCEO Tax Map Department
Administration Building
130 High Street
Hamilton, Ohio 45011
[Tel] 513.887.3500 [Fax] 513.887.3633
WWW.BCEO.ORG



PLOT DATE: 9/21/2009

NEW MIAMI

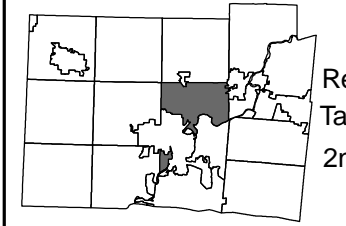
Section 21, Town 2, Range 3

BUTLER COUNTY, OHIO

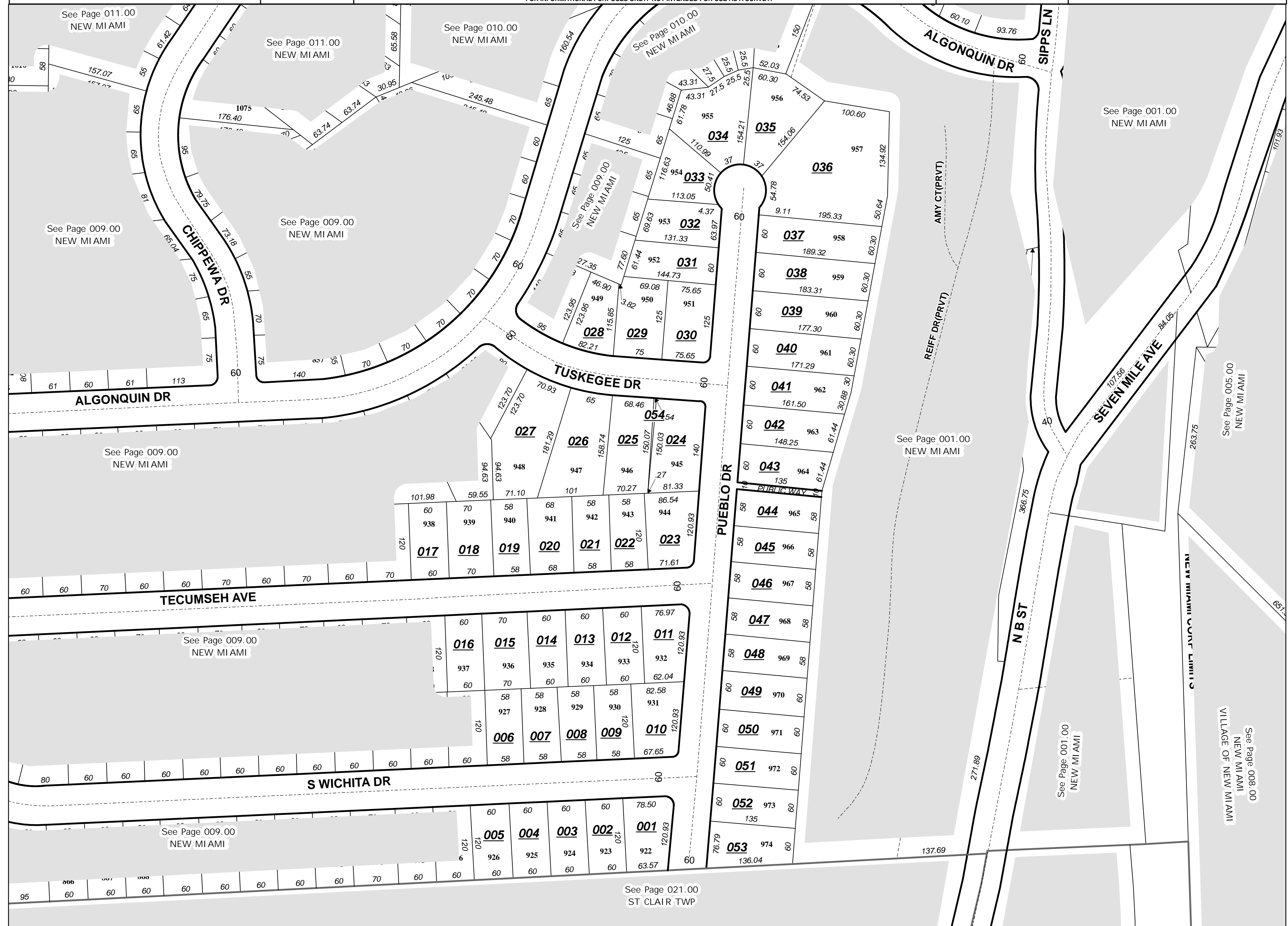
FOR INFORMATIONAL PURPOSES ONLY. NOT INTENDED FOR USE AS A SURVEY.

Scale: 1"=100'

012000



Revised Date: 2/14/2005
Taxing District: L5300
2nd Tax Dist: NONE



See Page 021.00
ST CLAIR TWP