



BCEO Tax Map Department  
 Administration Building  
 130 High Street  
 Hamilton, Ohio 45011  
 [Tel] 513.887.3500 [Fax] 513.887.3633  
 WWW.BCEO.ORG



PLOT DATE: 3/27/2009

# REILY TWP

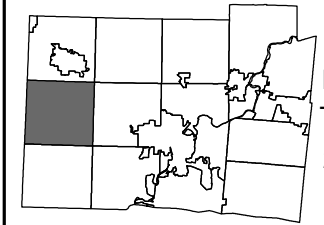
## Section 06, Town 4, Range 1

### BUTLER COUNTY, OHIO

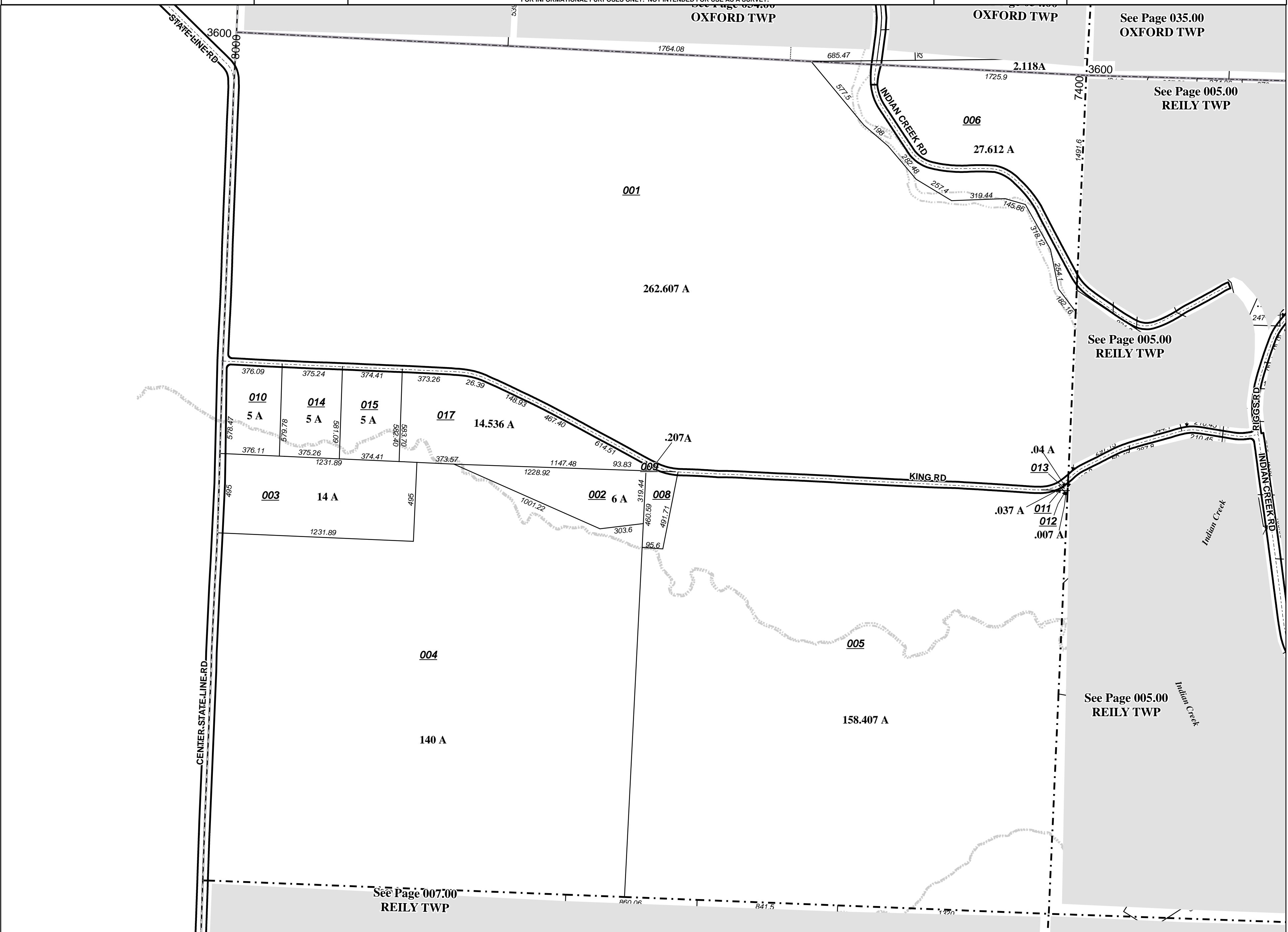
FOR INFORMATIONAL PURPOSES ONLY. NOT INTENDED FOR USE AS A SURVEY.

Scale: 1"=400'

006000



Revised Date: 11/9/2006  
 Taxing District: J4310  
 2nd Tax Dist: NONE



See Page 035.00  
 OXFORD TWP

See Page 005.00  
 REILY TWP

See Page 005.00  
 REILY TWP

See Page 005.00  
 REILY TWP

See Page 007.00  
 REILY TWP