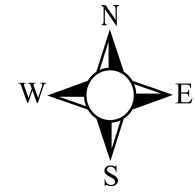




BCEO Tax Map Department
Administration Building
130 High Street
Hamilton, Ohio 45011
[Tel] 513.887.3500 [Fax] 513.887.3633
WWW.BCEO.ORG



PLOT DATE: 3/30/2009

REILY TWP

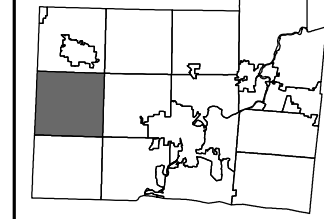
Section 07, Town 4, Range 1

BUTLER COUNTY, OHIO

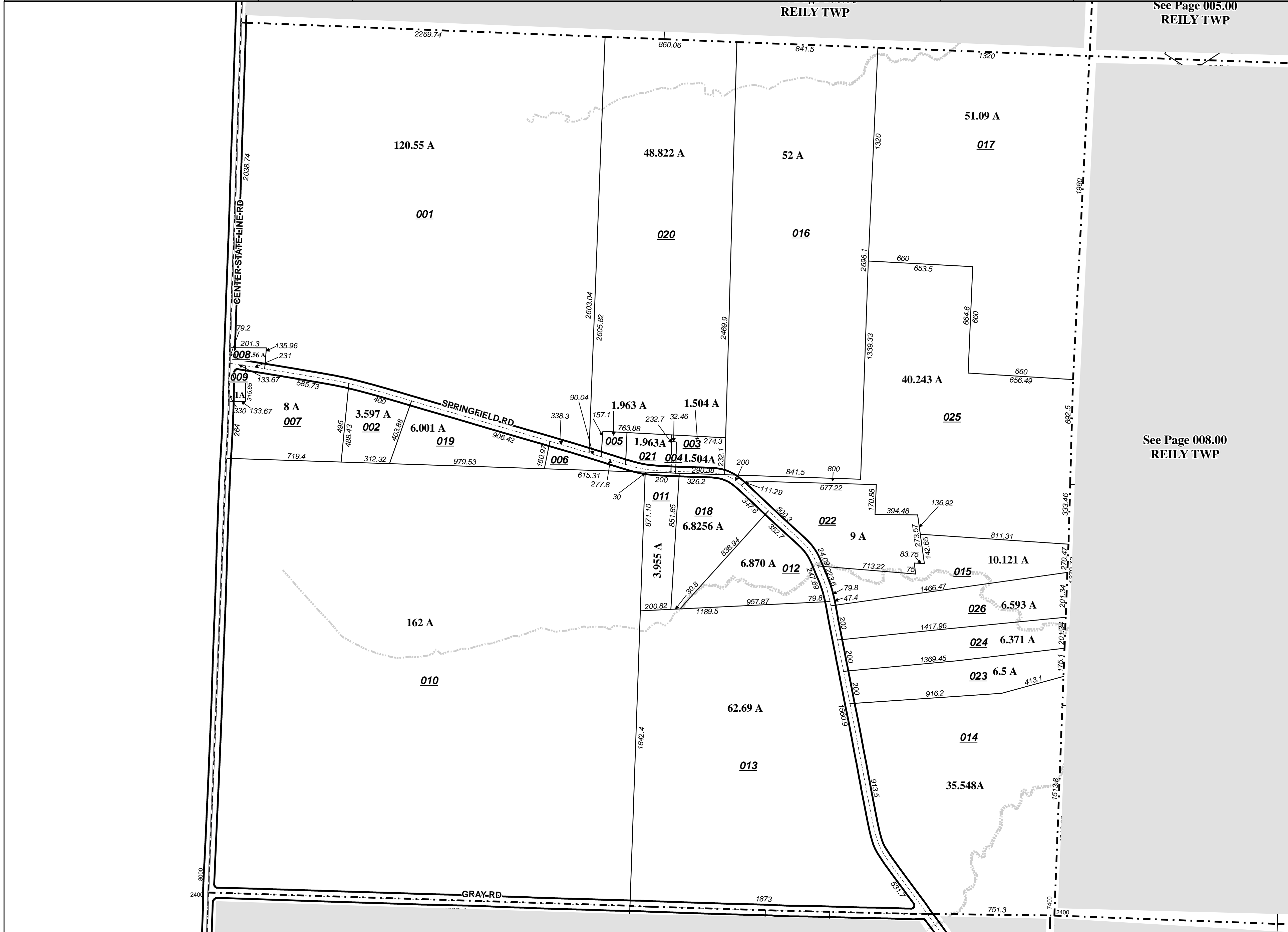
FOR INFORMATIONAL PURPOSES ONLY. NOT INTENDED FOR USE AS A SURVEY.

Scale: 1"=400'

007000



Revised Date: 5/17/2006
Taxing District: J4310
2nd Tax Dist: NONE



See Page 005.00
REILY TWP

See Page 008.00
REILY TWP