



BCEO Tax Map Department  
Administration Building  
130 High Street  
Hamilton, Ohio 45011  
[Tel] 513.887.3500 [Fax] 513.887.3633  
WWW.BCEO.ORG



PLOT DATE: 11/5/2010

# REILY TWP

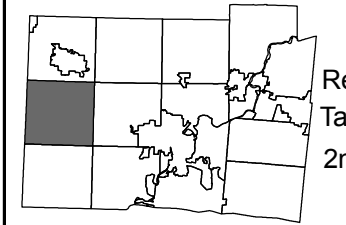
## Section 09, Town 4, Range 1

### BUTLER COUNTY, OHIO

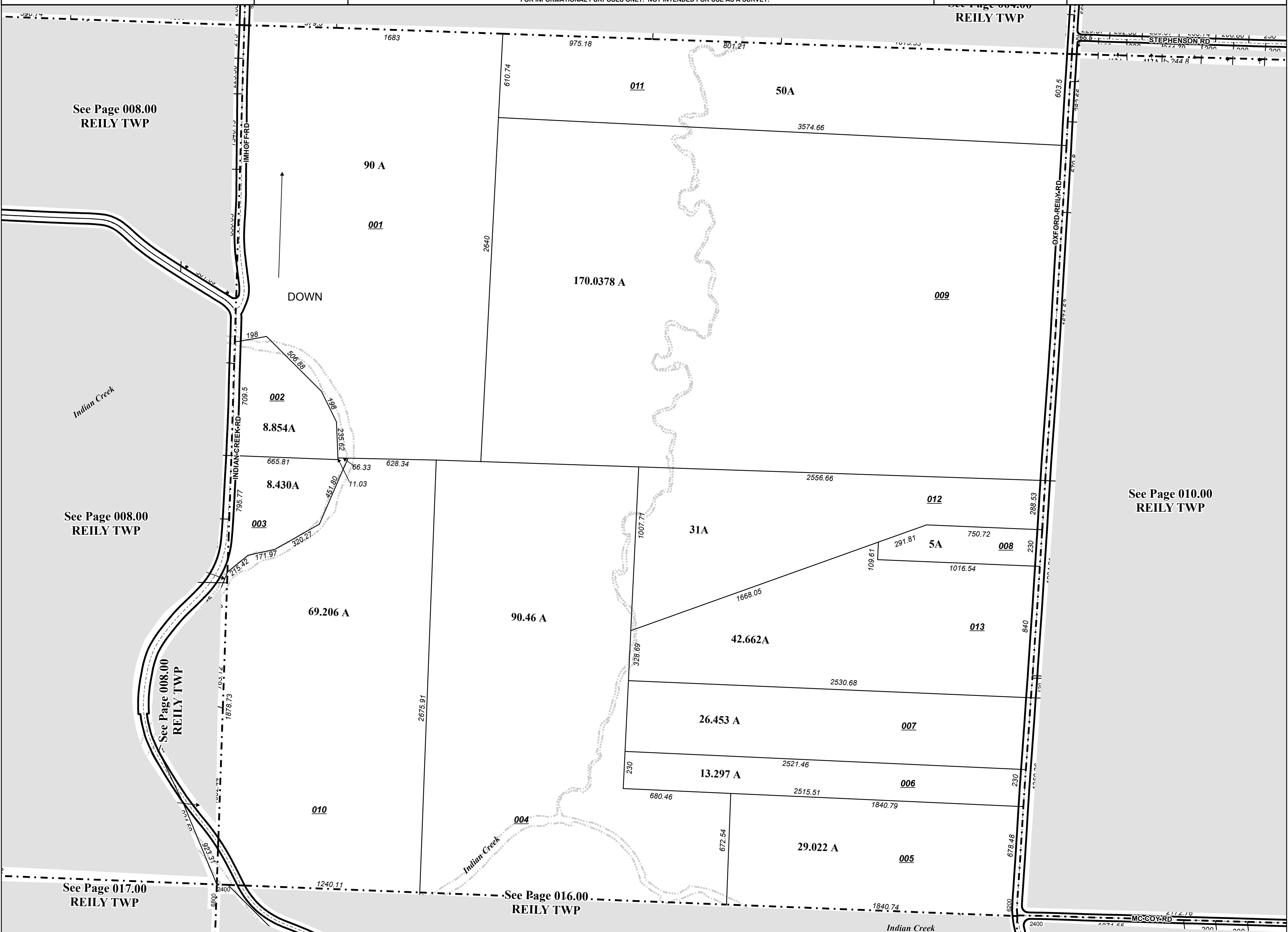
FOR INFORMATIONAL PURPOSES ONLY. NOT INTENDED FOR USE AS A SURVEY.

Scale: 1"=400'

009000



Revised Date: 11/4/2010  
Taxing District: J4310  
2nd Tax Dist: NONE



See Page 008.00  
REILY TWP

See Page 008.00  
REILY TWP

See Page 008.00  
REILY TWP

See Page 017.00  
REILY TWP

See Page 016.00  
REILY TWP

See Page 010.00  
REILY TWP