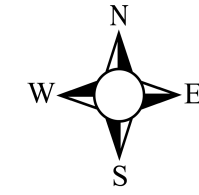




BCEO Tax Map Department
Administration Building
130 High Street
Hamilton, Ohio 45011
[Tel] 513.887.3500 [Fax] 513.887.3633
WWW.BCEO.ORG



PLOT DATE: 7/24/2009

THE FOUNTAINS

WEST CHESTER TWP

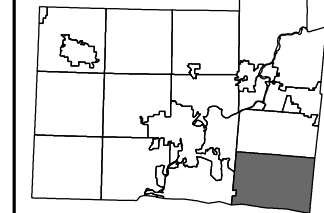
Section 23, Town 3, Range 2

BUTLER COUNTY, OHIO

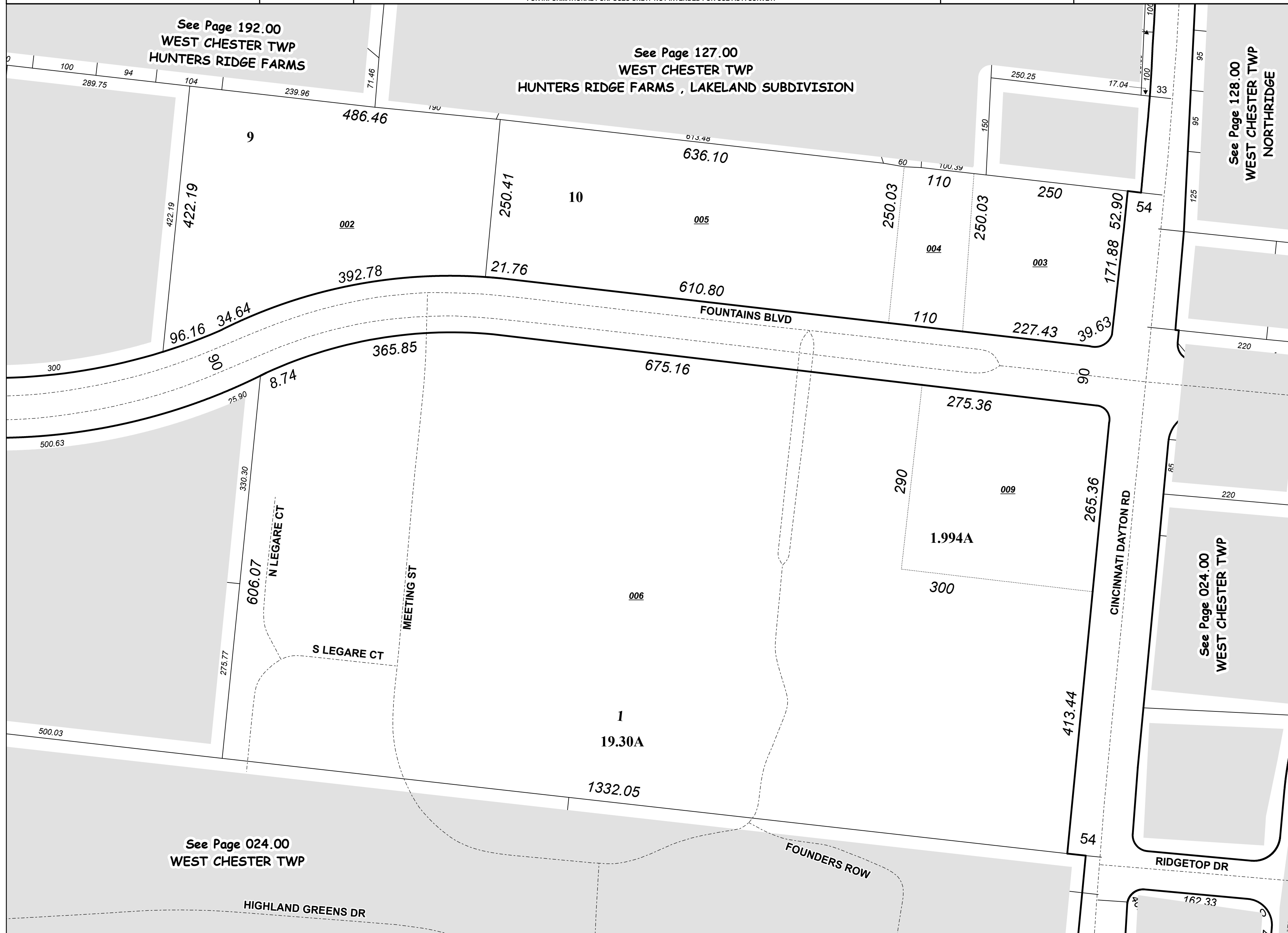
FOR INFORMATIONAL PURPOSES ONLY. NOT INTENDED FOR USE AS A SURVEY.

Scale: 1"=100'

146000



Revised Date: 2/16/2005
Taxing District: M5620
2nd Tax Dist: NONE



See Page 192.00
WEST CHESTER TWP
HUNTERS RIDGE FARMS

See Page 127.00
WEST CHESTER TWP
HUNTERS RIDGE FARMS , LAKELAND SUBDIVISION

See Page 128.00
WEST CHESTER TWP
NORTHBRIDGE

See Page 024.00
WEST CHESTER TWP