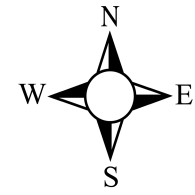




BCEO Tax Map Department
 Administration Building
 130 High Street
 Hamilton, Ohio 45011
 [Tel] 513.887.3500 [Fax] 513.887.3633
 WWW.BCEO.ORG



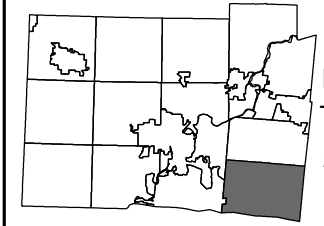
PLOT DATE: 7/16/2009

CRESTFIELD SUBDIVISION
WEST CHESTER TWP
 Section 21, Town 3, Range 2
 BUTLER COUNTY, OHIO

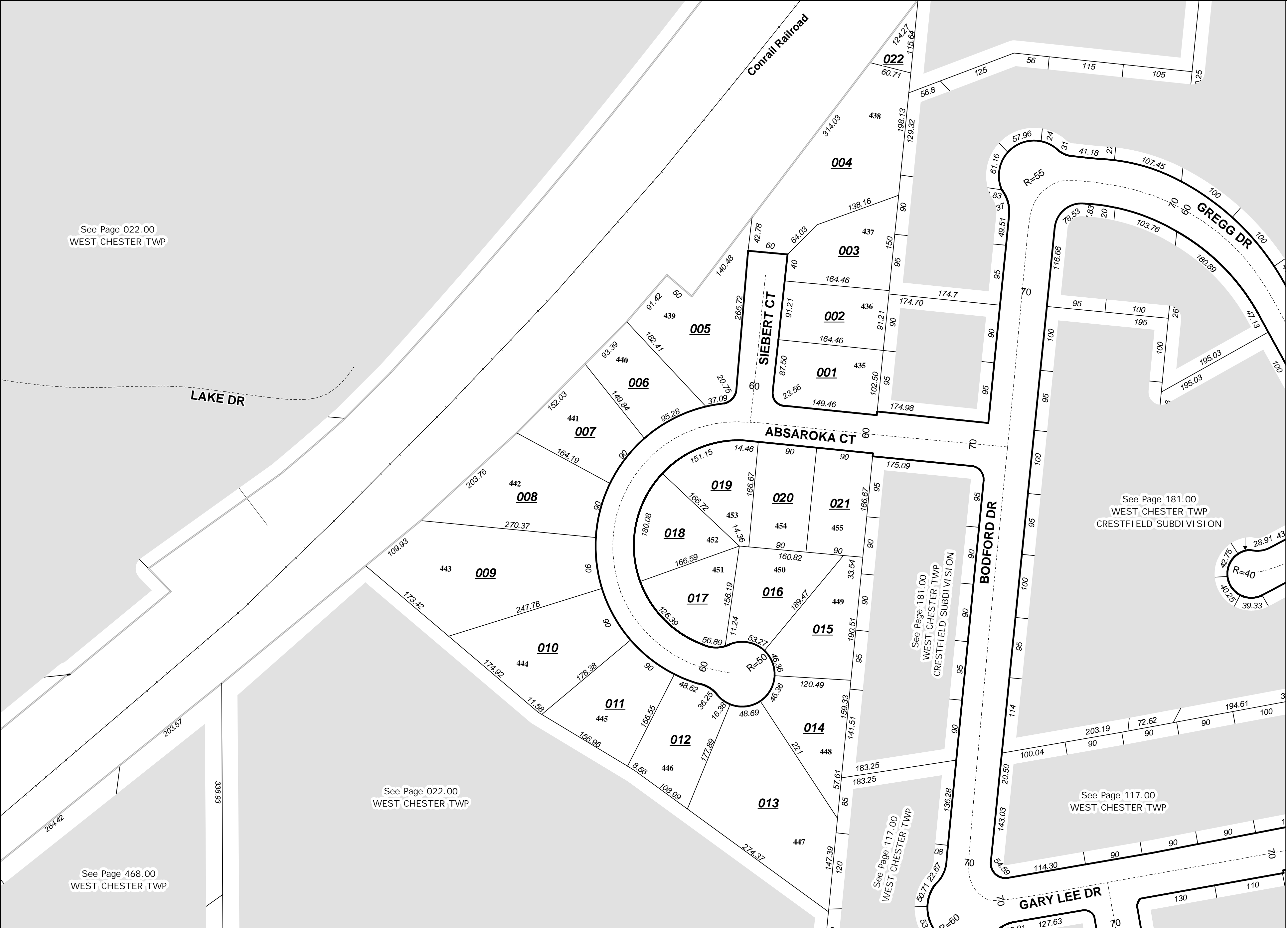
FOR INFORMATIONAL PURPOSES ONLY. NOT INTENDED FOR USE AS A SURVEY.

Scale: 1"=100'

310000



Revised Date: 5/31/1996
 Taxing District: M5620
 2nd Tax Dist: NONE



See Page 022.00
 WEST CHESTER TWP

See Page 181.00
 WEST CHESTER TWP
 CRESTFIELD SUBDIVISION

See Page 022.00
 WEST CHESTER TWP

See Page 468.00
 WEST CHESTER TWP

See Page 181.00
 WEST CHESTER TWP
 CRESTFIELD SUBDIVISION

See Page 117.00
 WEST CHESTER TWP

See Page 117.00
 WEST CHESTER TWP