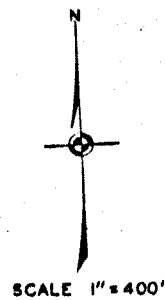
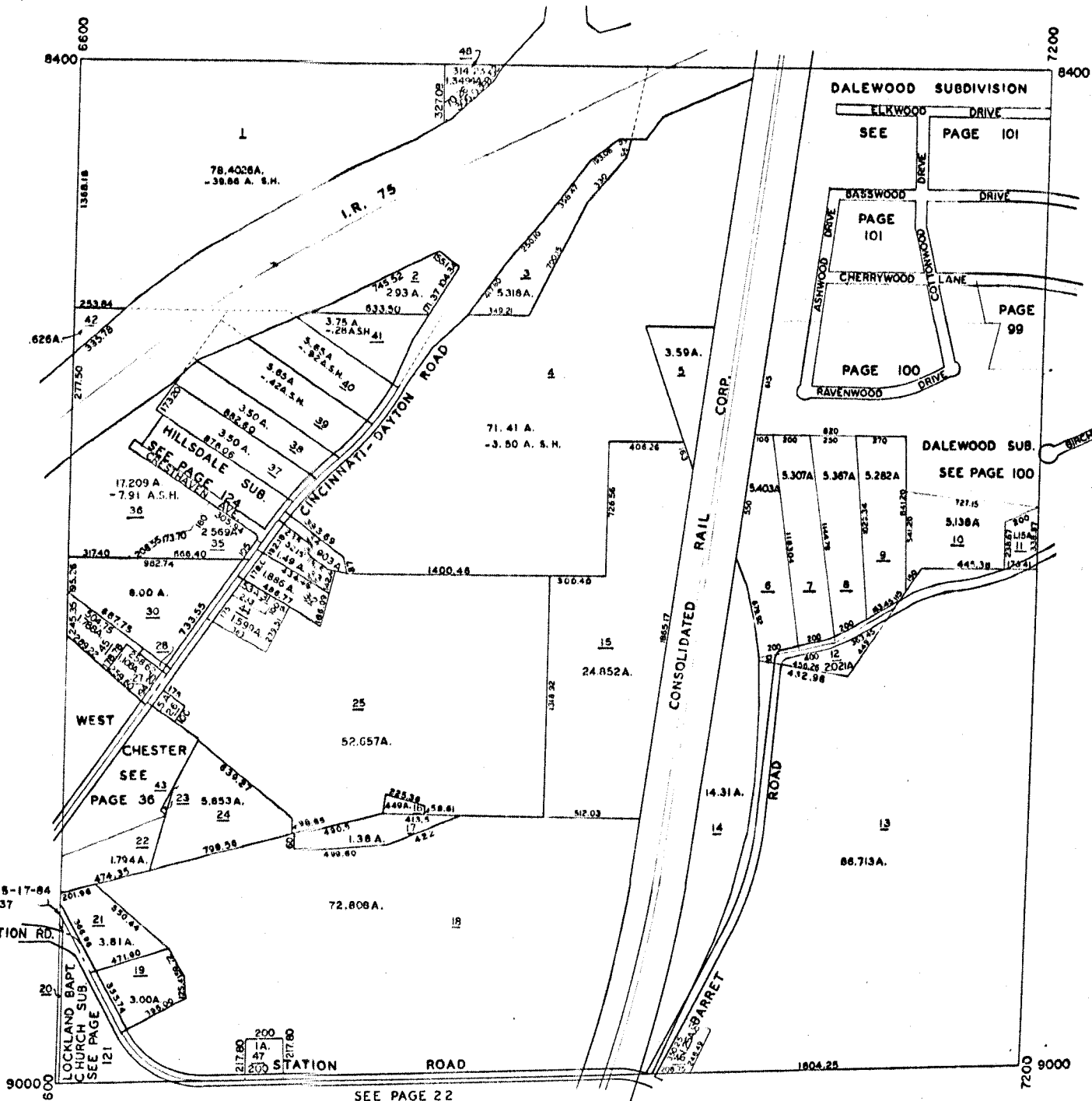


UNION TWP
SEC. 22 T3 R.2

SEE PAGE 24



SEE PAGE 28

SEE PAGE 18

SEE PAGE 22

VACATED 5-17-84
84-5-537

STATION RD.

LOCKLAND BAPT.
CHURCH SUB.
SEE PAGE 121

WEST
CHESTER
SEE
PAGE 36

HILLDALE SUB.
SEE PAGE 124

DALEWOOD SUBDIVISION

ELKWOOD DRIVE
SEE PAGE 101
BASSWOOD DRIVE
PAGE 101
CHERRYWOOD LANE
PAGE 99
ASHWOOD DRIVE
PAGE 100
RAVENWOOD DRIVE

DALEWOOD SUB.
SEE PAGE 100

CONSOLIDATED RAIL CORP.

BARRETT

BIRCHWOOD DRIVE

6600

8400

8400

9000

7200

7200