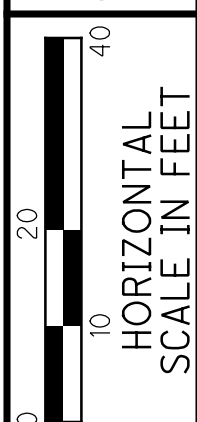
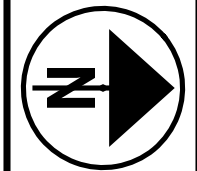


# BUT-SALZMAN ROAD EXTENSION

SECTION 30, TOWN 3, RANGE 3, B.T.M.  
CITY OF MONROE  
BUTLER COUNTY, OHIO



PID NO. **98852**

R/W DESIGNER DKY  
R/W REVIEWER RCW

**RIGHT OF WAY PLAN  
DETENTION PARCEL**

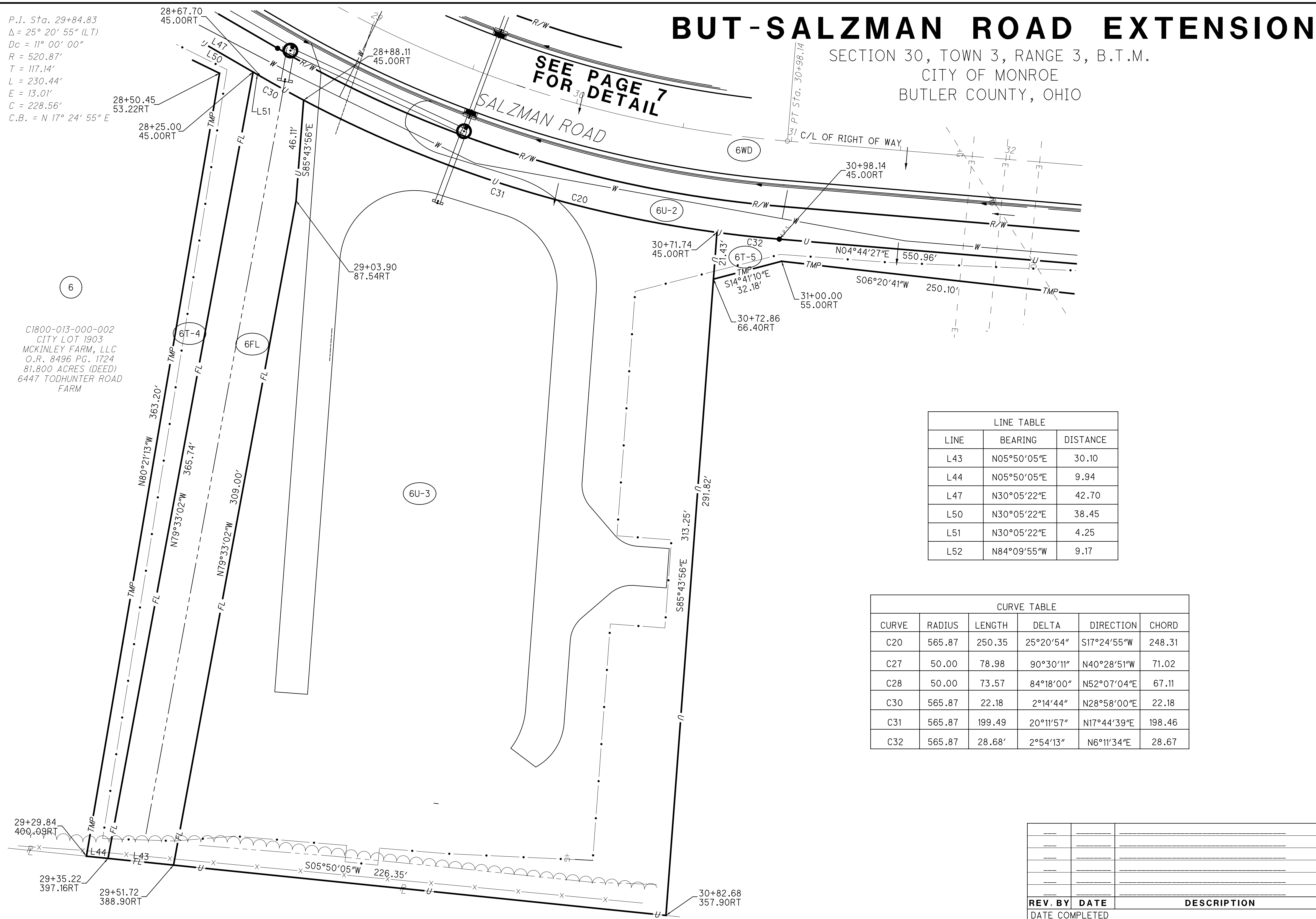
**BUT-SALZMAN  
ROAD EXTENSION**

10 / 11

77  
78

P.I. Sta. 29+84.83  
Δ = 25° 20' 55" (LT)  
Dc = 11° 00' 00"  
R = 520.87'  
T = 117.14'  
L = 230.44'  
E = 13.01'  
C = 228.56'  
C.B. = N 17° 24' 55" E

**SEE PAGE 7  
FOR DETAIL**



C1800-013-000-002  
CITY LOT 1903  
MCKINLEY FARM, LLC  
O.R. 8496 PG. 1724  
81.800 ACRES (DEED)  
6447 TODHUNTER ROAD  
FARM

LINE TABLE		
LINE	BEARING	DISTANCE
L43	N05°50'05"E	30.10
L44	N05°50'05"E	9.94
L47	N30°05'22"E	42.70
L50	N30°05'22"E	38.45
L51	N30°05'22"E	4.25
L52	N84°09'55"W	9.17

CURVE TABLE					
CURVE	RADIUS	LENGTH	DELTA	DIRECTION	CHORD
C20	565.87	250.35	25°20'54"	S17°24'55"W	248.31
C27	50.00	78.98	90°30'11"	N40°28'51"W	71.02
C28	50.00	73.57	84°18'00"	N52°07'04"E	67.11
C30	565.87	22.18	2°14'44"	N28°58'00"E	22.18
C31	565.87	199.49	20°11'57"	N17°44'39"E	198.46
C32	565.87	28.68'	2°54'13"	N6°11'34"E	28.67

REV. BY	DATE	DESCRIPTION