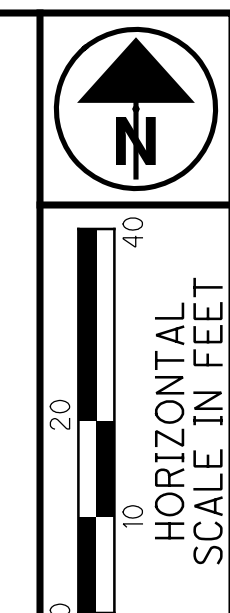
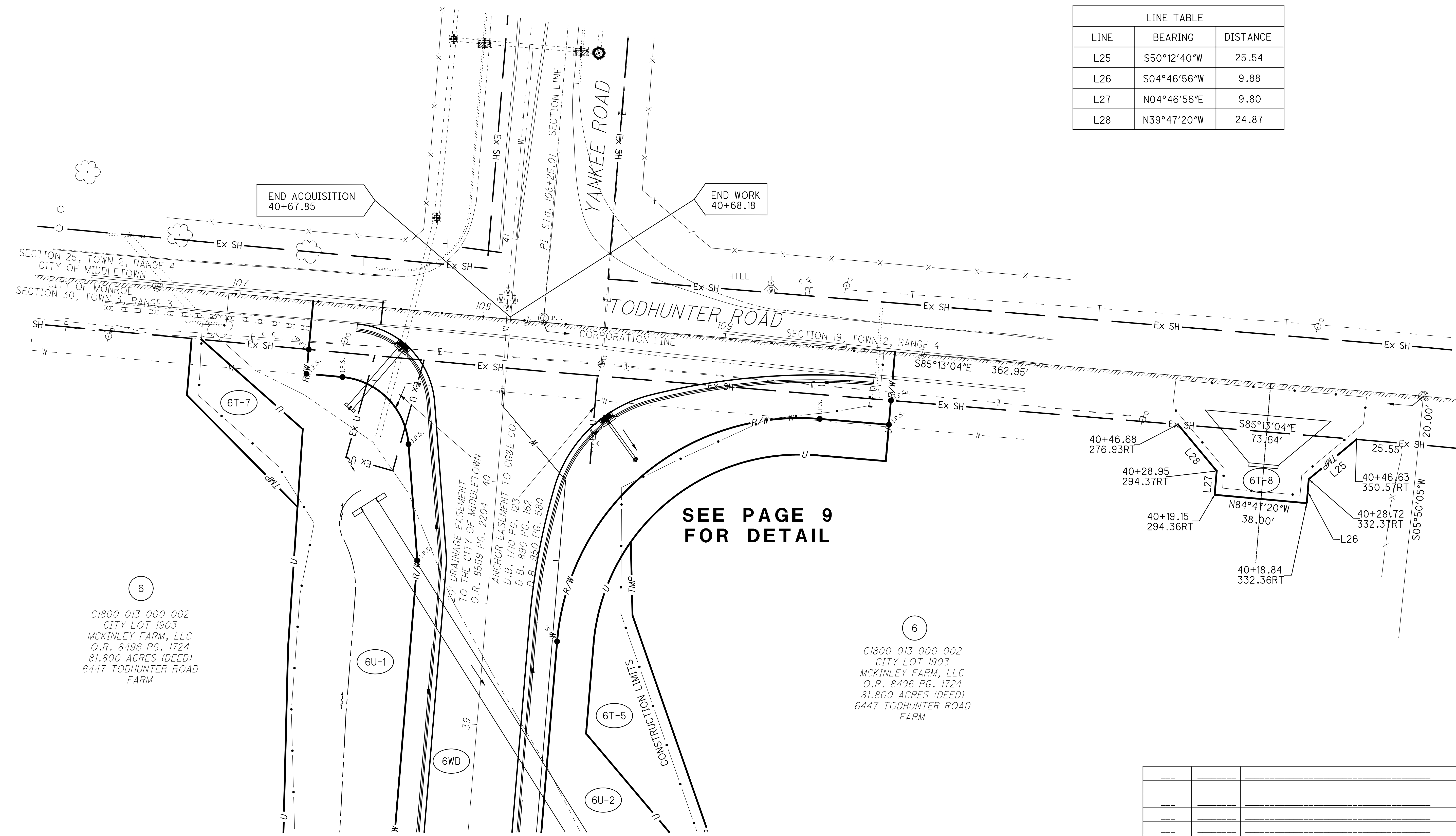


BUT-SALZMAN ROAD EXTENSION

SECTION 30, TOWN 3, RANGE 3, B.T.M.
CITY OF MONROE
BUTLER COUNTY, OHIO



LINE TABLE		
LINE	BEARING	DISTANCE
L25	S50°12'40"W	25.54
L26	S04°46'56"W	9.88
L27	N04°46'56"E	9.80
L28	N39°47'20"W	24.87



SEE PAGE 9 FOR DETAIL

6
C1800-013-000-002
CITY LOT 1903
MCKINLEY FARM, LLC
O.R. 8496 PG. 1724
81.800 ACRES (DEED)
6447 TODHUNTER ROAD
FARM

6
C1800-013-000-002
CITY LOT 1903
MCKINLEY FARM, LLC
O.R. 8496 PG. 1724
81.800 ACRES (DEED)
6447 TODHUNTER ROAD
FARM

PID NO. **98852**
R/W DESIGNER DKY
R/W REVIEWER RCW

RIGHT OF WAY PLAN
STA. 36+00 TO 40+58.02

BUT-SALZMAN
ROAD EXTENSION

11 / 11
78
78

REV. BY	DATE	DESCRIPTION