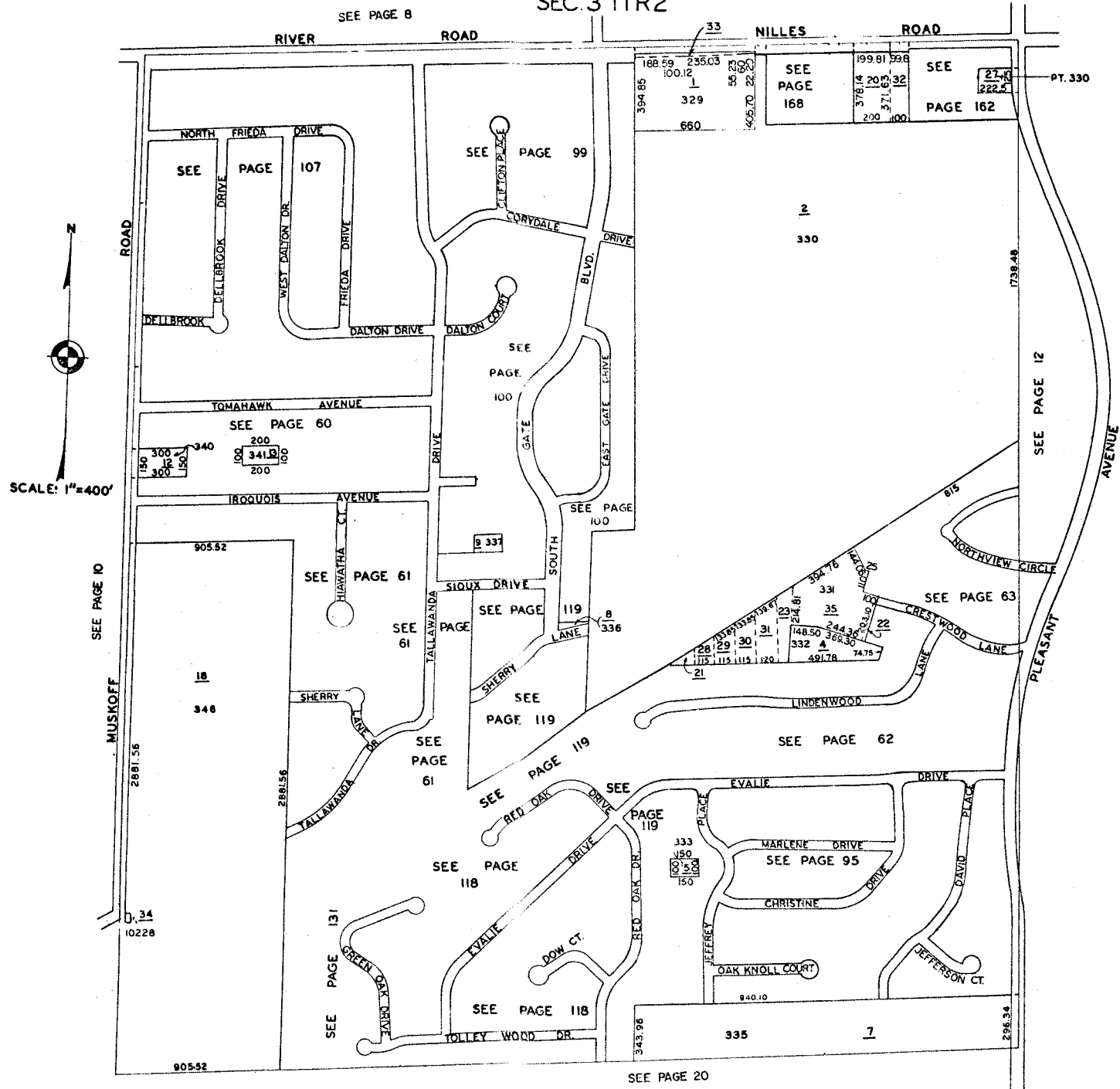


FAIRFIELD CITY SEC. 3 T1R2



SCALE: 1"=400'



SEE PAGE 8

33

SEE PAGE 168

SEE PAGE 162

PT. 330

SEE PAGE 99

SEE PAGE 107

SEE PAGE 100

SEE PAGE 60

150 300 150
300 150 300
340 200
100 341.8 100
200

SEE PAGE 61

SEE PAGE 119

SEE PAGE 63

SEE PAGE 119

SEE PAGE 62

SEE PAGE 118

SEE PAGE 119

SEE PAGE 95

SEE PAGE 131

SEE PAGE 118

335

7

SEE PAGE 20

SEE PAGE 10

MUSKOFF

ROAD

RIVER ROAD

ROAD

NILLES ROAD

ROAD

SEE PAGE 12

PLEASANT AVENUE

ROAD

NORTH FRIEDA DRIVE

BELLBROOK DRIVE

WEST DALTON DR

FRIEDA DRIVE

DALTON DRIVE

DALTON COURT

CORRYDALE DRIVE

BLVD.

EAST GATE DRIVE

TOMAHAWK AVENUE

IRROQUOIS AVENUE

DRIVE

SOUTH

SILOUX DRIVE

LANE

LANE

354.76 331 35
107.51 134.67 23.81
28.79 130 148.50 244.30
115 115 115 120 332.4 369.30
21 203.10 22

337

915

NORTHVIEW CIRCLE

CRESWOOD LANE

LINDENWOOD

SHERRY

LANE

SEE PAGE 61

SEE PAGE 119

SEE PAGE 119

SEE PAGE 119

EVALIE DRIVE

MARLENE DRIVE

CHRISTINE

OAK KNOLL COURT

JEFFERSON CT.

SEE PAGE 131

SEE PAGE 118

DOW CT.

SEE PAGE 118

343.96

940.10

296.34

905.52

2891.56

10228

18 348

905.52

150 300 150
300 150 300

100 341.8 100
200

BELLBROOK

CLIFTON PLACE

168.59 235.03
100.12 1
329 56.25
660 405.70 22.50

2 330

199.81 598
376.14 20.39
200 371.69 32

274
222.4

1738.48

915

100

22

203.10

244.30

369.30

491.78

74.75

332.4

23.81

134.67

107.51

28.79

115

115

115

120

21

35

331

354.76

107.51

134.67

23.81

28.79

115

115

115

120

21

35

331

354.76

107.51

134.67

23.81

28.79

115

115

115

120

21

35

331

354.76

107.51

134.67

23.81

28.79

115

115

115

120

21

35

331

354.76

107.51

134.67

23.81

28.79

115

115

115

120

21

35

331

354.76

107.51

134.67

23.81

28.79

115

115

115

120

21

35

331

354.76

107.51

134.67

23.81

28.79

115

115

115

120

21

35

331

354.76

107.51

134.67

23.81

28.79

115

115

115

120

21

35

331

354.76

107.51

134.67

23.81

28.79

115

115

115

120

21

35

331

354.76

107.51

134.67

23.81

28.79

115

115

115

120

21

35

331

354.76

107.51

134.67

23.81

28.79

115

115

115

120

21

35

331

354.76

107.51

134.67

23.81

28.79

115

115

115

120

21

35

331

354.76

107.51

134.67

23.81

28.79

115

115

115

120

21

35

331

354.76

107.51

134.67

23.81

28.79

115

115

115

120

21

35

331

354.76

107.51

134.67

23.81

28.79

115

115

115

120

21

35

331

354.76

107.51

134.67

23.81

28.79

115

115

115

120

21

35

331

354.76

107.51

134.67

23.81

28.79

115

115

115

120

21

35

331

354.76

107.51

134.67

23.81

28.79

115

115