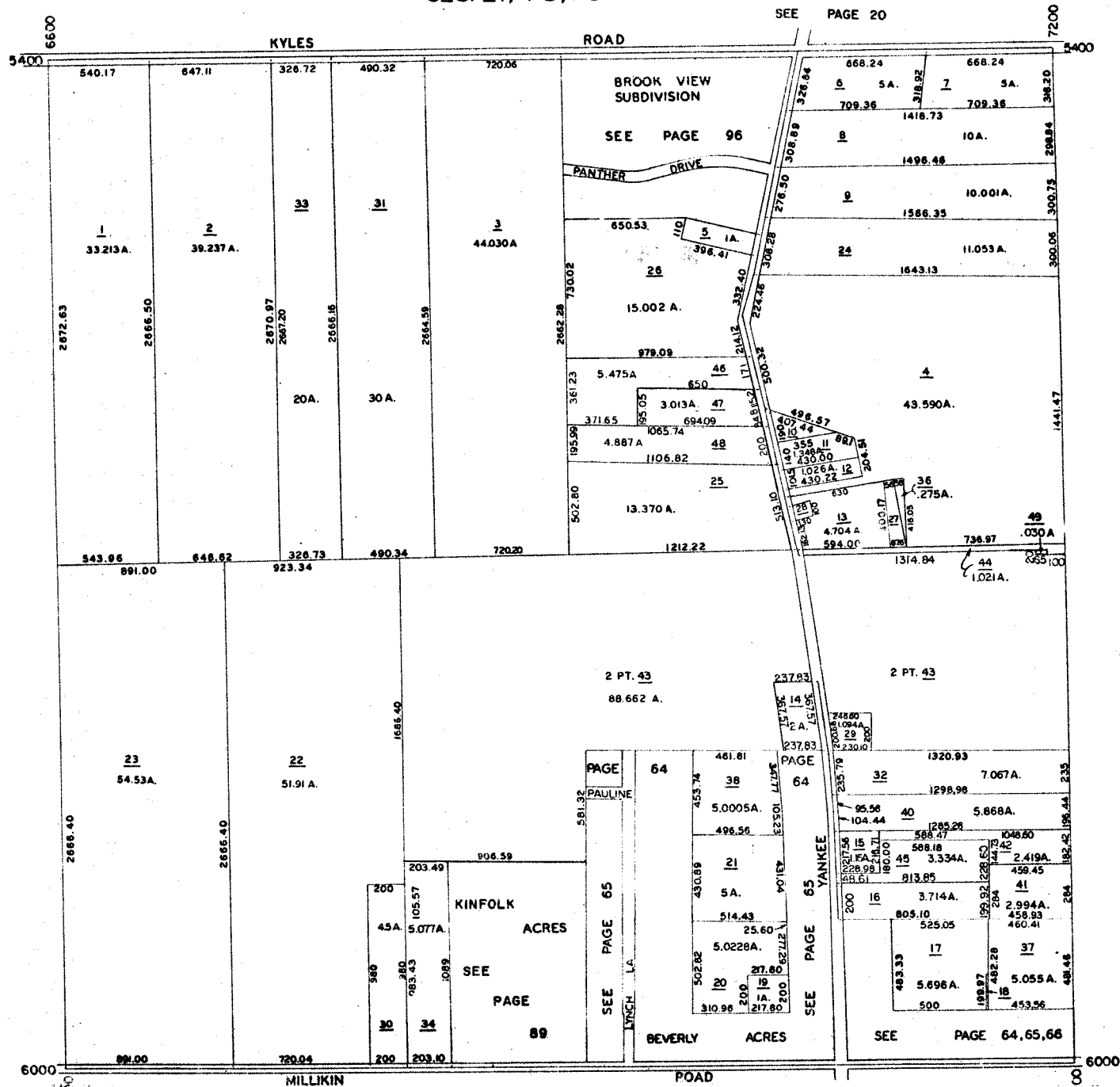


LIBERTY TWP

SEC. 21, T 3, R3



SEE PAGE
24

SEE PAGE
15



PAGE	64	461.61	PAGE	64	1320.93
		453.74			1298.98
		5.0005A			7.067A
		496.56			5.868A
		430.89			3.334A
		5A.			3.714A
		514.43			2.994A
		25.60			458.83
		5.0228A			460.41
		20			5.696A
		310.96			505.5A
		200			453.56
		217.80			

SEE PAGE 65
PAULINE
LITCH LA

SEE PAGE 65
YANKEE

237.83	14	248.00	32	1320.93
151.96	15	1094A		
151.96	29	280		
237.83	30	2230.10		
	31	235.79		
	32	285.28		
	33	95.56		
	34	104.44		
	35	285.28		
	36	588.47		
	37	588.47		
	38	588.47		
	39	588.47		
	40	588.47		
	41	588.47		
	42	588.47		
	43	588.47		
	44	588.47		
	45	588.47		
	46	588.47		
	47	588.47		
	48	588.47		
	49	588.47		
	50	588.47		

SEE PAGE 64, 65, 66