

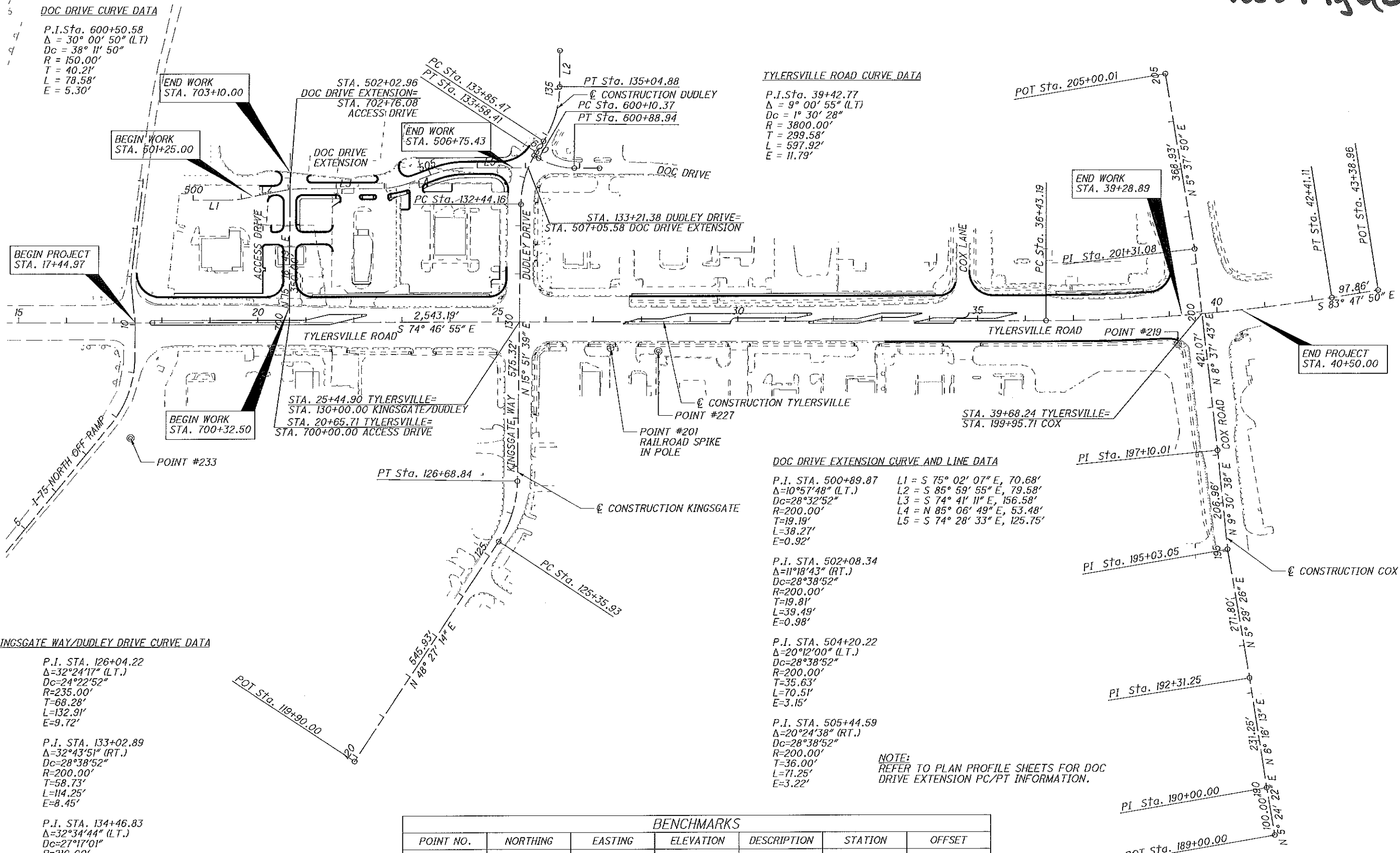


0 100 200
HORIZONTAL
SCALE IN FEET

SCHEMATIC PLAN

BUT-CR20-10.29

J:\14-113_BCEO_Tyler\5.9 Drawings\99999\roadway\sheet\99999\B001.dgn 7/14/2016 8:00:41 AM jeff.glowka ODOT\81_PDF_half\plctfg ODOT\81_Pen-ME.tbl M-E Companies, Inc.



DOC DRIVE CURVE DATA
 P.I. Sta. 600+50.58
 $\Delta = 30^\circ 00' 50''$ (LT.)
 $D_c = 38^\circ 11' 50''$
 $R = 150.00'$
 $T = 40.21'$
 $L = 78.58'$
 $E = 5.30'$

TYLERSVILLE ROAD CURVE DATA
 P.I. Sta. 39+42.77
 $\Delta = 9^\circ 00' 55''$ (LT.)
 $D_c = 1^\circ 30' 28''$
 $R = 3800.00'$
 $T = 299.58'$
 $L = 597.92'$
 $E = 11.79'$

DOC DRIVE EXTENSION CURVE AND LINE DATA

P.I. STA. 500+89.87	L1 = S 75° 02' 07" E, 70.68'
$\Delta = 10^\circ 57' 48''$ (LT.)	L2 = S 85° 59' 55" E, 79.58'
$D_c = 28^\circ 32' 52''$	L3 = S 74° 41' 11" E, 156.58'
$R = 200.00'$	L4 = N 85° 06' 49" E, 53.48'
$T = 19.19'$	L5 = S 74° 28' 33" E, 125.75'
$L = 38.27'$	
$E = 0.92'$	

P.I. STA. 502+08.34
 $\Delta = 11^\circ 18' 43''$ (RT.)
 $D_c = 28^\circ 38' 52''$
 $R = 200.00'$
 $T = 19.81'$
 $L = 39.49'$
 $E = 0.98'$

P.I. STA. 504+20.22
 $\Delta = 20^\circ 12' 00''$ (LT.)
 $D_c = 28^\circ 38' 52''$
 $R = 200.00'$
 $T = 35.63'$
 $L = 70.51'$
 $E = 3.15'$

P.I. STA. 505+44.59
 $\Delta = 20^\circ 24' 38''$ (RT.)
 $D_c = 28^\circ 38' 52''$
 $R = 200.00'$
 $T = 36.00'$
 $L = 71.25'$
 $E = 3.22'$

NOTE:
 REFER TO PLAN PROFILE SHEETS FOR DOC
 DRIVE EXTENSION PC/PT INFORMATION.

KINGSGATE WAY/DUDLEY DRIVE CURVE DATA

P.I. STA. 126+04.22
 $\Delta = 32^\circ 24' 17''$ (LT.)
 $D_c = 24^\circ 22' 52''$
 $R = 235.00'$
 $T = 68.28'$
 $L = 132.91'$
 $E = 9.72'$

P.I. STA. 133+02.89
 $\Delta = 32^\circ 43' 51''$ (RT.)
 $D_c = 28^\circ 38' 52''$
 $R = 200.00'$
 $T = 58.73'$
 $L = 114.25'$
 $E = 8.45'$

P.I. STA. 134+46.83
 $\Delta = 32^\circ 34' 44''$ (LT.)
 $D_c = 27^\circ 17' 01''$
 $R = 210.00'$
 $T = 61.37'$
 $L = 119.41'$
 $E = 8.78'$

BENCHMARKS						
POINT NO.	NORTHING	EASTING	ELEVATION	DESCRIPTION	STATION	OFFSET
201	498465.3113	1440114.9166	869.39	BENCHMARK	27+35.91	54.91' RT.
219	498160.7008	1441256.7777	889.75	CMON	39+13.72	58.89' RT.
227	498432.8932	1440208.5386	866.13	CMON	28+34.75	61.62' RT.
233	498549.4666	1439101.2988	872.15	CMON	17+35.74	239.77' RT.

NOTE:
 THE TYLERSVILLE ROAD CONSTRUCTION CENTERLINE SHOWN IN THESE
 PLANS (PHASE 2) IS DIFFERENT FROM THE TYLERSVILLE ROAD
 CONSTRUCTION CENTERLINE FROM THE PHASE 1 PLANS.