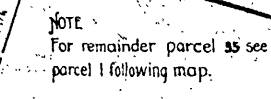


BUTLER COUNTY, OHIO
FAIRFIELD TOWNSHIP



CORRECT AS OF DEC. 31	REVISED	
	YES	NO
1967		
1968		
1969	✓	
1974		
1973		
1972		✓
1971		✓
1970		✓
1969		✓
1968		✓
1967		✓
1966		✓

Correct as of Dec. 31st, 1955-Not	Revision	Correct as of Dec. 31st, 1942-Map	Revised
Correct as of Dec. 31st, 1954-Not	Revision	Correct as of Dec. 31st, 1941-Map	Revised
Correct as of Dec. 31st, 1953-Not	Revision	Correct as of Dec. 31st, 1940-Not	Revision
Correct as of Dec. 31st, 1952-Not	Revision	Correct as of Dec. 31st, 1939-Not	Revision
Correct as of Dec. 31st, 1951-Map	Revised	Correct as of Dec. 31st, 1938-Map	Revised
Correct as of Dec. 31st, 1950-Not	Revision	Correct as of Dec. 31st, 1937-Not	Revision
Correct as of Dec. 31st, 1949-Not	Revision	Correct as of Dec. 31st, 1936-Not	Revision
Correct as of Dec. 31st, 1948-Not	Revision	Correct as of Dec. 31st, 1935-Not	Revision
Correct as of Dec. 31st, 1947-Not	Revision	Correct as of Dec. 31st, 1934-Not	Revision
Correct as of Dec. 31st, 1946-Not	Revision	Correct as of Dec. 31st, 1933-Not	Revision
Correct as of Dec. 31st, 1945-Not	Revision	Correct as of Dec. 31st, 1932-Not	Revision
Correct as of Dec. 31st, 1944-Map	Revised	Correct as of Dec. 31st, 1931-Not	Revision
Correct as of Dec. 31st, 1943-Not	Revision	Correct as of Dec. 31st, 1930-Map	Revised

Correct as of Dec. 31st. 1929 Map Revised
 Corrected as of Dec. 31st. 1928 Map Revised
 Correct as of Dec. 31st. 1927 Map Revised
 Correct as of June 30th 1927 No Revision
 Corrected as of June 30th 1926 No Revision
 Correct as of June 30th 1925 No Revision
 Correct as of June 30th 1924 No Revision
 Correct as of June 30th 1923 Map Revised
 Correct as of June 30th 1922 No Revision
 Correct as of June 30th 1921 No Revision
 Correct as of June 30th 1920 Map Revision
 Correct as of June 30th 1919 No Revision
 Correct as of June 30th 1918 No Revision
 Correct as of June 30th 1917 Map Revised

SCHEDULE OF SIDINGS AND CROSSOVER

PHILA. BALTO. & WASHINGTON R. R.
FORMERLY

RIGHT OF WAY AND TRACK MAP
PITTSBURGH, CINCINNATI, CHICAGO & ST. LOUIS RY.


RICHMOND DIVISION

STATION 1267+20 TO STATION 1320+00

SCALE: 1 IN = 100 FT. JUNE 30, 1918

OFFICE OF VALUATION ENGINEER

PHILADELPHIA, PA.



V. 10
OHIO
25