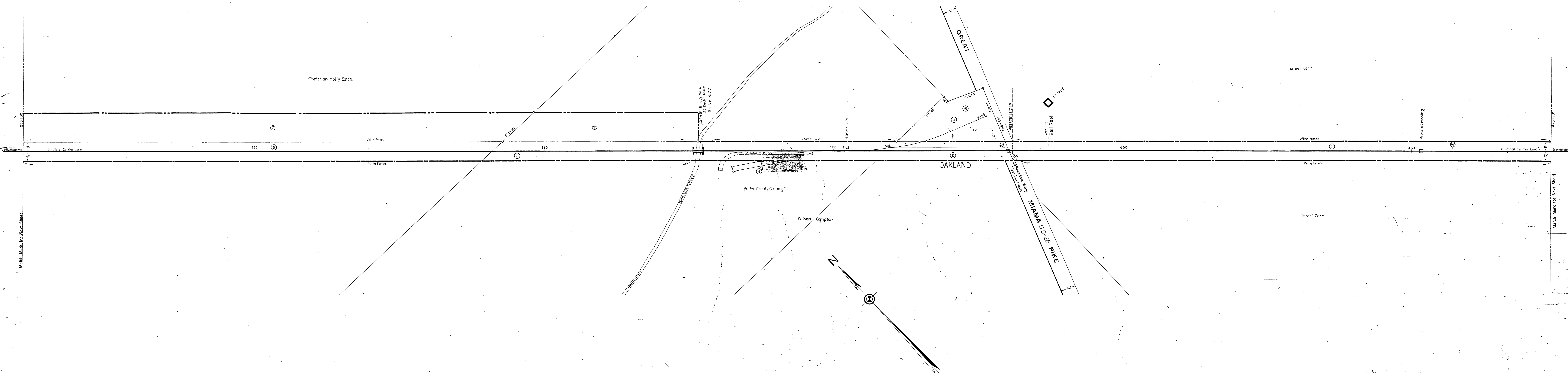


BUTLER COUNTY, OHIO

LEMON TOWNSHIP

T. 2 R. 4



SCHEDULE OF SIDINGS AND CROSSOVERS					
Siding Number	Location	Class	Length June 30, 1923	Total	Remarks
1	Lemon Township	R.R. Co.	5.1.0'	5.2.0'	Shortened 2.91' Nov. 24, 1925
2			3.5.8'	3.5.8'	
3			3.9.0'	3.9.0'	

Correct as of Dec. 31st, 1955-Map Revised	Correct as of Dec. 31st, 1941-No Revision	Correct as of Dec. 31st, 1939-No Revision
Correct as of Dec. 31st, 1954-Map Revised	Correct as of Dec. 31st, 1940-No Revision	Correct as of Dec. 31st, 1938-No Revision
Correct as of Dec. 31st, 1953-Map Revised	Correct as of Dec. 31st, 1939-No Revision	Correct as of Dec. 31st, 1937-No Revision
Correct as of Dec. 31st, 1952-Map Revised	Correct as of Dec. 31st, 1938-No Revision	Correct as of Dec. 31st, 1936-No Revision
Correct as of Dec. 31st, 1951-No Revision	Correct as of Dec. 31st, 1937-No Revision	Correct as of Dec. 31st, 1935-No Revision
Correct as of Dec. 31st, 1950-No Revision	Correct as of Dec. 31st, 1936-No Revision	Correct as of Dec. 31st, 1934-Map Revised
Correct as of Dec. 31st, 1949-No Revision	Correct as of Dec. 31st, 1935-No Revision	Correct as of Dec. 31st, 1933-Map Revised
Correct as of Dec. 31st, 1948-No Revision	Correct as of Dec. 31st, 1934-Map Revised	Correct as of Dec. 31st, 1932-Map Revised
Correct as of Dec. 31st, 1947-No Revision	Correct as of Dec. 31st, 1933-Map Revised	Correct as of Dec. 31st, 1931-No Revision
Correct as of Dec. 31st, 1946-No Revision	Correct as of Dec. 31st, 1932-Map Revised	Correct as of Dec. 31st, 1930-No Revision
Correct as of Dec. 31st, 1945-No Revision	Correct as of Dec. 31st, 1931-No Revision	
Correct as of Dec. 31st, 1944-Map Revised	Correct as of Dec. 31st, 1930-No Revision	
Correct as of Dec. 31st, 1943-No Revision		

Sheet No. 10 V. 1 c Ohio, of Cincinnati, Lebanon & Northern Railway
from Survey Station 475+20' to Survey Station 528+00'

Chief Draftsman

CONNECTING RAILWAY
FORMERLY
RIGHT OF WAY AND TRACK MAP
CINCINNATI, LEBANON & NORTHERN RAILWAY
MIDDLETOWN & CINCINNATI BRANCH
STATION 475+20' TO STATION 528+00'

SCALE 1 INCH = 100 FT. JUNE 30, 1917
OFFICE OF VALUATION ENGINEER
PITTSBURGH, PA.

APPROPRIATE LEBANON & NORTHERN RAILWAY CO. MERGED
WITH OTHER CORPORATIONS TO FORM THE PENNSYLVANIA
RAILROAD COMPANY JULY 1, 1924