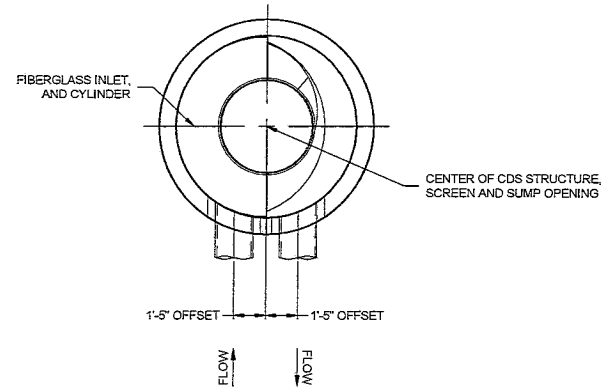
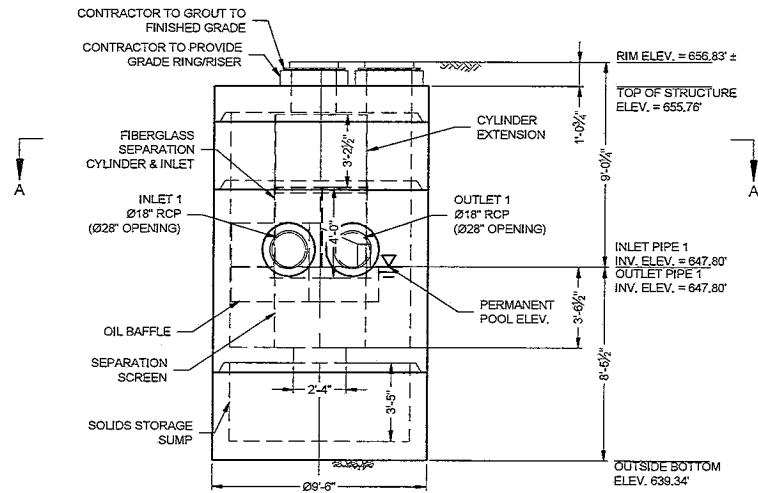


INLET 1    OUTLET 1  
**PLAN VIEW**



**SECTION A-A**

COUNT	DESCRIPTION	INSTALLED BY
1	FIBERGLASS INLET AND CYLINDER	CONTECH
1	2400 micron, 4' O.D. x 3.04' SEP. SCREEN	CONTECH
1	CYLINDER EXTENSION	CONTRACTOR
1	SEALANT FOR JOINTS (BY PRECASTER)	CONTRACTOR
2	Ø24" x 4" FRAME & COVER, E.#41600389, OR EQUIV.	CONTRACTOR



**ELEVATION VIEW**

**GENERAL NOTES**

- CONTECH TO PROVIDE ALL MATERIALS UNLESS NOTED OTHERWISE.
- FOR FABRICATION DRAWINGS WITH DETAILED STRUCTURE DIMENSIONS AND WEIGHT, PLEASE CONTACT YOUR CONTECH ENGINEERED SOLUTIONS LLC REPRESENTATIVE. [www.ContechES.com](http://www.ContechES.com)
- CDS WATER QUALITY STRUCTURE SHALL BE IN ACCORDANCE WITH ALL DESIGN DATA AND INFORMATION CONTAINED IN THIS DRAWING. CONTRACTOR TO CONFIRM STRUCTURE MEETS REQUIREMENTS OF PROJECT.
- STRUCTURE SHALL MEET AASHTO HS-20 LOAD RATING, ASSUMING EARTH COVER OF 0' - 2', AND GROUNDWATER ELEVATION AT, OR BELOW, THE OUTLET PIPE INVERT ELEVATION. ENGINEER OF RECORD TO CONFIRM ACTUAL GROUNDWATER ELEVATION. CASTINGS SHALL MEET AASHTO M306 AND BE CAST WITH THE CONTECH LOGO.
- IF REQUIRED, PVC HYDRAULIC SHEAR PLATE IS PLACED ON SHELF AT BOTTOM OF SCREEN CYLINDER. REMOVE AND REPLACE AS NECESSARY DURING MAINTENANCE CLEANING.
- CDS STRUCTURE SHALL BE PRECAST CONCRETE CONFORMING TO ASTM C-478 AND AASHTO LOAD FACTOR DESIGN METHOD.

**INSTALLATION NOTES**

- ANY SUB-BASE, BACKFILL DEPTH, AND/OR ANTI-FLOTATION PROVISIONS ARE SITE-SPECIFIC DESIGN CONSIDERATIONS AND SHALL BE SPECIFIED BY ENGINEER OF RECORD.
- CONTRACTOR TO PROVIDE EQUIPMENT WITH SUFFICIENT LIFTING AND REACH CAPACITY TO LIFT AND SET THE CDS MANHOLE STRUCTURE.
- CONTRACTOR TO INSTALL JOINT SEALANT BETWEEN ALL STRUCTURE SECTIONS AND ASSEMBLE STRUCTURE.
- CONTRACTOR TO PROVIDE, INSTALL, AND GROUT INLET AND OUTLET PIPE(S). MATCH PIPE INVERTS WITH ELEVATIONS SHOWN. ALL PIPE CENTERLINES TO MATCH PIPE OPENING CENTERLINES.
- CONTRACTOR TO TAKE APPROPRIATE MEASURES TO ASSURE UNIT IS WATER TIGHT, HOLDING WATER TO FLOWLINE INVERT MINIMUM. IT IS SUGGESTED THAT ALL JOINTS BELOW PIPE INVERTS ARE GROUTED.

**STRUCTURE WEIGHT**

APPROXIMATE HEAVIEST PICK = 30,500 LBS.  
STRUCTURE IS DELIVERED IN 4 PIECES

MAX FOOTPRINT = Ø9'-6"

CONTECH  
DRAWING

The design and fabrication shown on this drawing is the property of CONTECH ENGINEERED SOLUTIONS LLC. It is to be used only for the project and location specified. Any reproduction, modification, or use for any other project without the written consent of CONTECH ENGINEERED SOLUTIONS LLC is strictly prohibited. CONTECH ENGINEERED SOLUTIONS LLC shall not be held responsible for any errors or omissions in this drawing. If discrepancies between the supplied information and the drawing are encountered at any time, the contractor shall be responsible for clarification of the drawing. CONTECH ENGINEERED SOLUTIONS LLC shall not be held responsible for any damage, injury, or loss resulting from the use of this drawing.

MARK	DATE	REVISION DESCRIPTION	BY

CDS4030-8-C - 588810-30  
CINCINNATI DAYTON RD  
WEST CHESTER, OH  
for SYSTEM: UNIT 43

**CONTECH**  
ENGINEERED SOLUTIONS LLC  
www.conteches.com  
800-338-1372

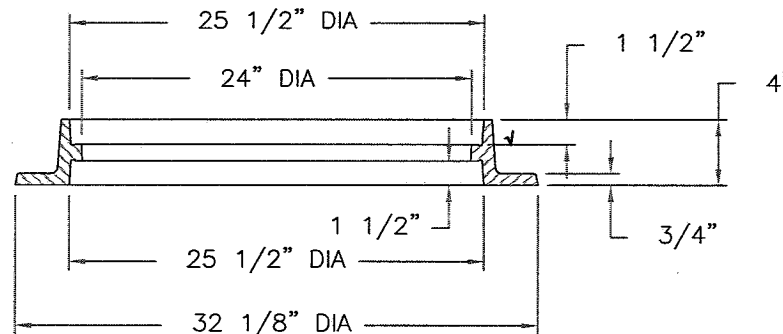
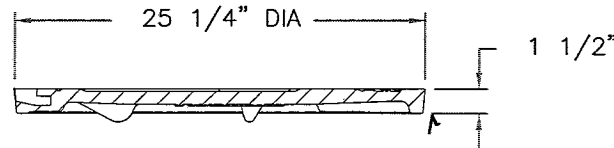
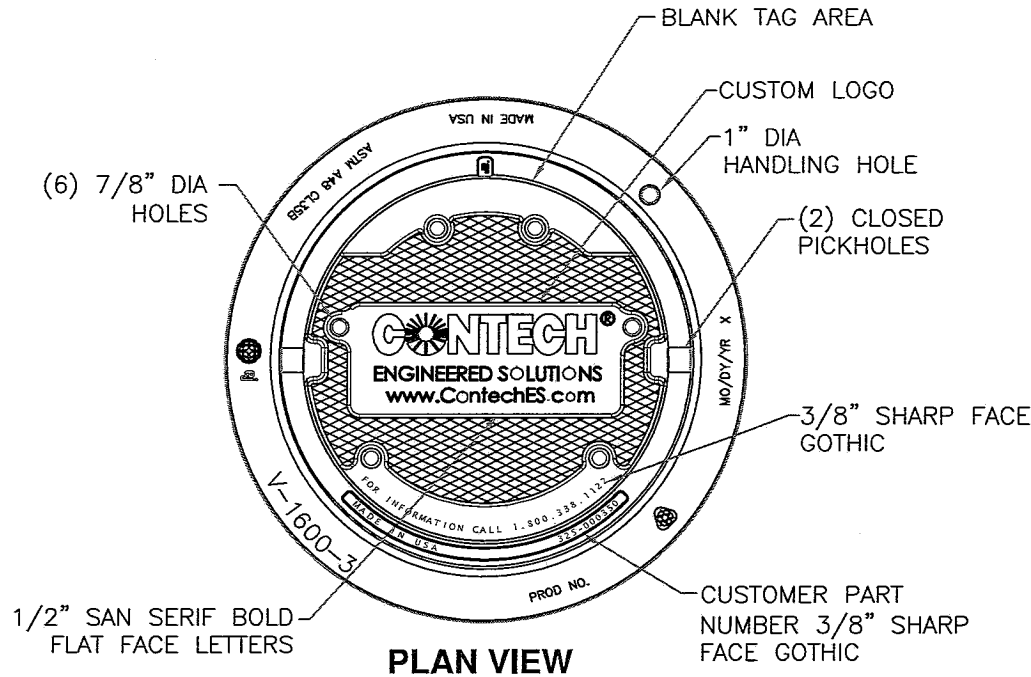
**Gps**  
THE INTEGRATION OF GPS TRACKING INTO CONSTRUCTION PROJECTS

DATE: 06/07/18	SCALE: 3/16" = 1'-0"
DESIGNED: KMS	DRAWN: SRJ
CHECKED: KMS	APPROVED: KMS
PROJECT No.: 588810	SEQUENCE No.: 30
SHEET: 1	OF 1

NCI  
LAYOUT 1A  
4030-8-FGIS  
5824 / NORW10  
22.51

I:\MELR\PROJECTS\ACTIV\588810-30\CDS\DRAWING\PRE-588810-30\CDS4030-8-C\FINAL\DWG\_07/20/18 9:11 AM

# V1600-3 V1610-3 Assembly



Product Number  
41600389

## Design Features

- Materials
  - Frame  
Gray Iron (CL35B)
  - Cover  
Gray Iron (CL35B)

- Design Load  
Heavy Duty
- Open Area  
n/a
- Coating  
Undipped
- √ Designates Machined Surface

## Certification

- ASTM A48
- Country of Origin: USA

## Major Components

41600310  
41600374

## Drawing Revision

05/02/2008 Designer: DEW  
6/20/2017 Revised By: DAE

## Disclaimer

Weights (lbs./kg) dimensions (inches/mm) and drawings provided for your guidance. We reserve the right to modify specifications without prior notice.

CONFIDENTIAL: This drawing is the property of EJ GROUP, Inc., and embodies confidential information, registered marks, patents, trade secret information, and/or know how that is the property of EJ GROUP, Inc. Copyright © 2012 EJ GROUP, Inc. All rights reserved.

## Contact

800 626 4653  
ejco.com