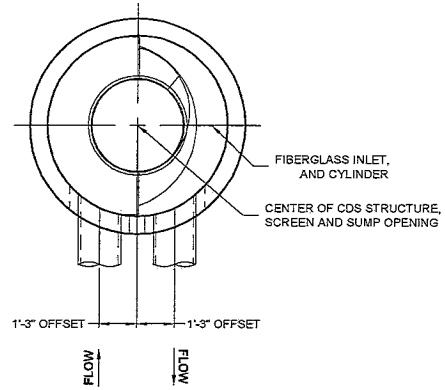


INLET 1 OUTLET 1
PLAN VIEW



SECTION A-A

MATERIAL LIST (PROVIDED BY CONTECH)

COUNT	DESCRIPTION	INSTALLED BY
1	FIBERGLASS INLET AND CYLINDER	CONTECH
1	2400 micron, 3' O.D. x 3.04' SEP. SCREEN	CONTECH
1	SEALANT FOR JOINTS (BY PRECASTER)	CONTRACTOR
1	Ø24" x 4" FRAME & COVER, E.#41600389, OR EQUIV.	CONTRACTOR
2	Ø12" x 4" FRAME & COVER, E.#41610201, OR EQUIV.	CONTRACTOR

GENERAL NOTES

- CONTECH TO PROVIDE ALL MATERIALS UNLESS NOTED OTHERWISE.
- FOR FABRICATION DRAWINGS WITH DETAILED STRUCTURE DIMENSIONS AND WEIGHT, PLEASE CONTACT YOUR CONTECH ENGINEERED SOLUTIONS LLC REPRESENTATIVE. www.ContechES.com
- CDS WATER QUALITY STRUCTURE SHALL BE IN ACCORDANCE WITH ALL DESIGN DATA AND INFORMATION CONTAINED IN THIS DRAWING. CONTRACTOR TO CONFIRM STRUCTURE MEETS REQUIREMENTS OF PROJECT.
- STRUCTURE SHALL MEET AASHTO HS-20 LOAD RATING, ASSUMING EARTH COVER OF 0' - 2', AND GROUNDWATER ELEVATION AT, OR BELOW, THE OUTLET PIPE INVERT ELEVATION. ENGINEER OF RECORD TO CONFIRM ACTUAL GROUNDWATER ELEVATION. CASTINGS SHALL MEET AASHTO M306 AND BE CAST WITH THE CONTECH LOGO.
- IF REQUIRED, PVC HYDRAULIC SHEAR PLATE IS PLACED ON SHELF AT BOTTOM OF SCREEN CYLINDER. REMOVE AND REPLACE AS NECESSARY DURING MAINTENANCE CLEANING.
- CDS STRUCTURE SHALL BE PRECAST CONCRETE CONFORMING TO ASTM C-478 AND AASHTO LOAD FACTOR DESIGN METHOD.

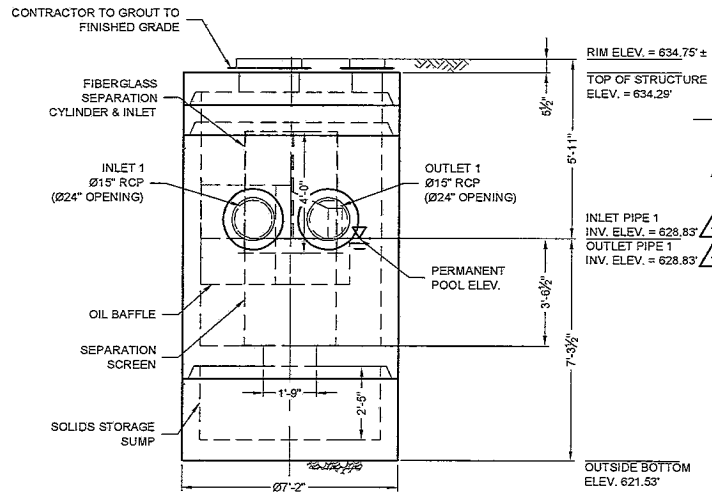
INSTALLATION NOTES

- ANY SUB-BASE, BACKFILL DEPTH, AND/OR ANTI-FLOTATION PROVISIONS ARE SITE-SPECIFIC DESIGN CONSIDERATIONS AND SHALL BE SPECIFIED BY ENGINEER OF RECORD.
- CONTRACTOR TO PROVIDE EQUIPMENT WITH SUFFICIENT LIFTING AND REACH CAPACITY TO LIFT AND SET THE CDS MANHOLE STRUCTURE.
- CONTRACTOR TO INSTALL JOINT SEALANT BETWEEN ALL STRUCTURE SECTIONS AND ASSEMBLE STRUCTURE.
- CONTRACTOR TO PROVIDE, INSTALL, AND GROUT INLET AND OUTLET PIPE(S). MATCH PIPE INVERTS WITH ELEVATIONS SHOWN. ALL PIPE CENTERLINES TO MATCH PIPE OPENING CENTERLINES.
- CONTRACTOR TO TAKE APPROPRIATE MEASURES TO ASSURE UNIT IS WATER TIGHT, HOLDING WATER TO FLOWLINE INVERT MINIMUM. IT IS SUGGESTED THAT ALL JOINTS BELOW PIPE INVERTS ARE GROUTED.

STRUCTURE WEIGHT
APPROXIMATE HEAVIEST PICK = 18000 LBS.
STRUCTURE IS DELIVERED IN 4 PIECES

MAX FOOTPRINT = Ø7'-2"

CONTECH
DRAWING



ELEVATION VIEW

This design and fabrication shall be in accordance with the design and fabrication specifications of the manufacturer of the equipment. The contractor shall be responsible for providing the necessary permits and approvals for the installation and operation of the equipment. The contractor shall be responsible for the safety of the installation and operation of the equipment. The contractor shall be responsible for the maintenance and repair of the equipment. The contractor shall be responsible for the disposal of any waste materials generated during the installation and operation of the equipment.

MARK	DATE	REVISION DESCRIPTION	BY
1	6/12/18	PIPE INVERTS	SRJ

CDS3030-6-C - 588810-20
CINCINNATI DAYTON RD
WEST CHESTER, OH
for SYSTEM: UNIT 27

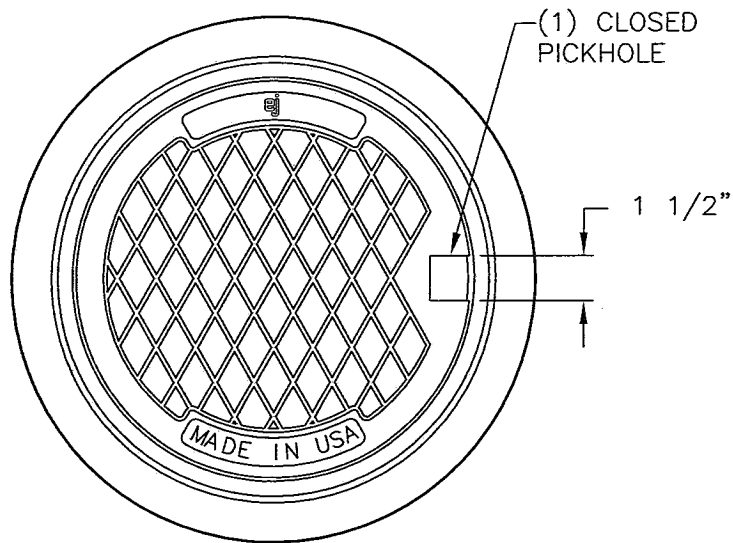
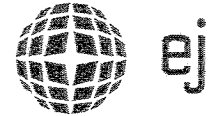
CONTECH
ENGINEERED SOLUTIONS LLC
1951 Center Pointe Dr., Suite 400, West Chester, OH 44444

GPS
CONSTRUCTION SOFTWARE

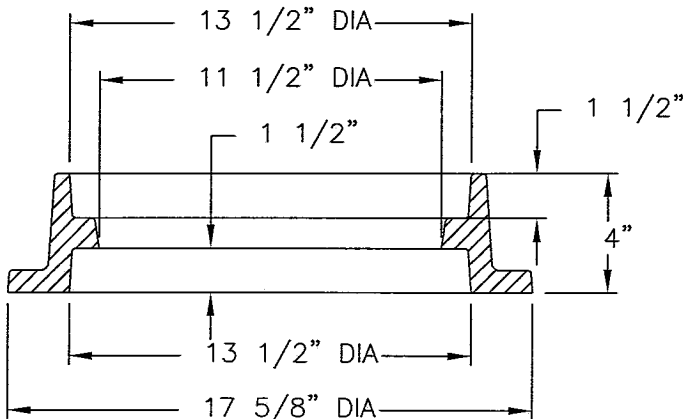
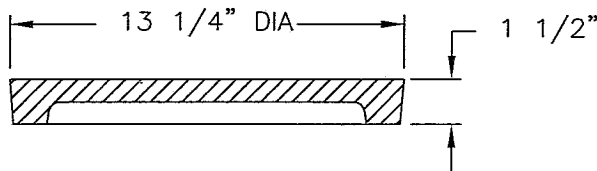
DATE:	SCALE:
05/12/18	1/4" = 1'-0"
DESIGNED:	DRAWN:
KMS	SRJ
CHECKED:	APPROVED:
KMS	KMS
PROJECT No.:	SEQUENCE No.:
588810	20
SHEET:	
	1 of 1

NCI
LAYOUT 1A
3030-6-FG:IS
5824 / NORW10
13.55T

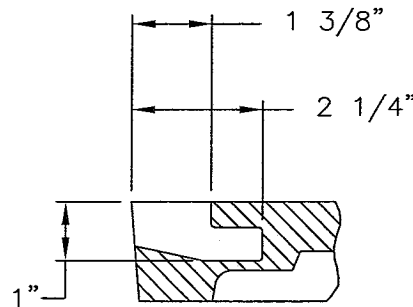
V1610-2BF RG V1610-2CV Assembly



BOTTOM FLANGE VIEW



SECTION VIEW



PICKHOLE DETAIL

NOTE:
RING IS REVERSIBLE AND CAN BE
INSTALLED AS A TOP FLANGE UNIT

Product Number

41610201

Design Features

- Materials
- Cleanout/Monument Box Frame
Gray Iron (CL35B)
- Cleanout/Monument Box Cover
Gray Iron (CL35B)

- Design Load
- Heavy Duty

- Open Area
- n/a

- Coating
- Undipped

- √ Designates Machined Surface

Certification

- ASTM A48

- Country of Origin: USA

Major Components

41610210

41610220

Drawing Revision

06/12/2003 Designer: DAL

09/09/2015 Revised By: DVD

Disclaimer

Weights (lbs./kg) dimensions (inches/mm) and drawings provided for your guidance. We reserve the right to modify specifications without prior notice.

CONFIDENTIAL: This drawing is the property of EJ GROUP, Inc., and embodies confidential information, registered marks, patents, trade secret information, and/or know how that is the property of EJ GROUP, Inc. Copyright © 2012 EJ GROUP, Inc.

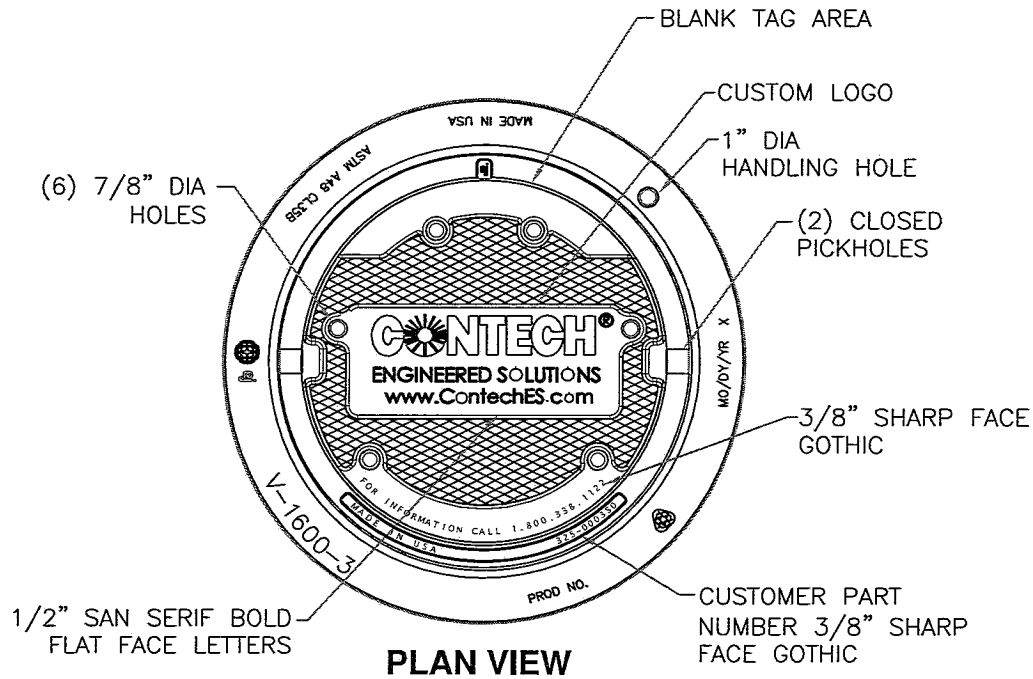
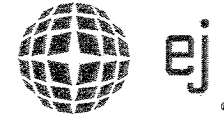
All rights reserved.

Contact

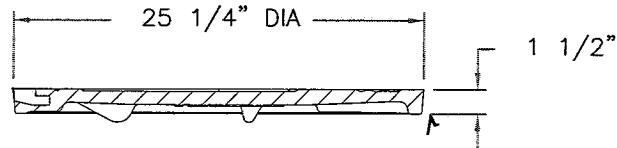
800 626 4653

ejco.com

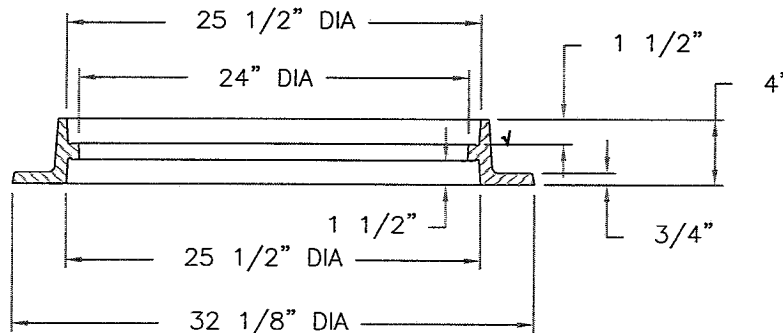
V1600-3 V1610-3 Assembly



PLAN VIEW



COVER SECTION



RING SECTION

Product Number
41600389

Design Features

- Materials
 - Frame Gray Iron (CL35B)
 - Cover Gray Iron (CL35B)

- Design Load Heavy Duty
- Open Area n/a
- Coating Undipped
- √ Designates Machined Surface

Certification

- ASTM A48
- Country of Origin: USA

Major Components

- 41600310
- 41600374

Drawing Revision

- 05/02/2008 Designer: DEW
- 6/20/2017 Revised By: DAE

Disclaimer

Weights (lbs./kg) dimensions (inches/mm) and drawings provided for your guidance. We reserve the right to modify specifications without prior notice.

CONFIDENTIAL: This drawing is the property of EJ GROUP, Inc., and embodies confidential information, registered marks, patents, trade secret information, and/or know how that is the property of EJ GROUP, Inc. Copyright © 2012 EJ GROUP, Inc. All rights reserved.

Contact

800 626 4653
ejco.com