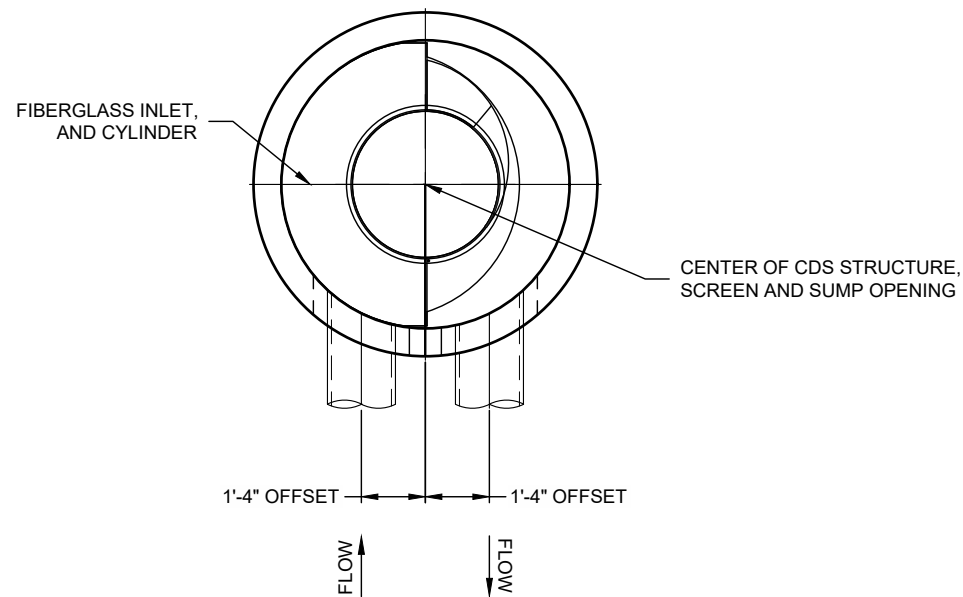
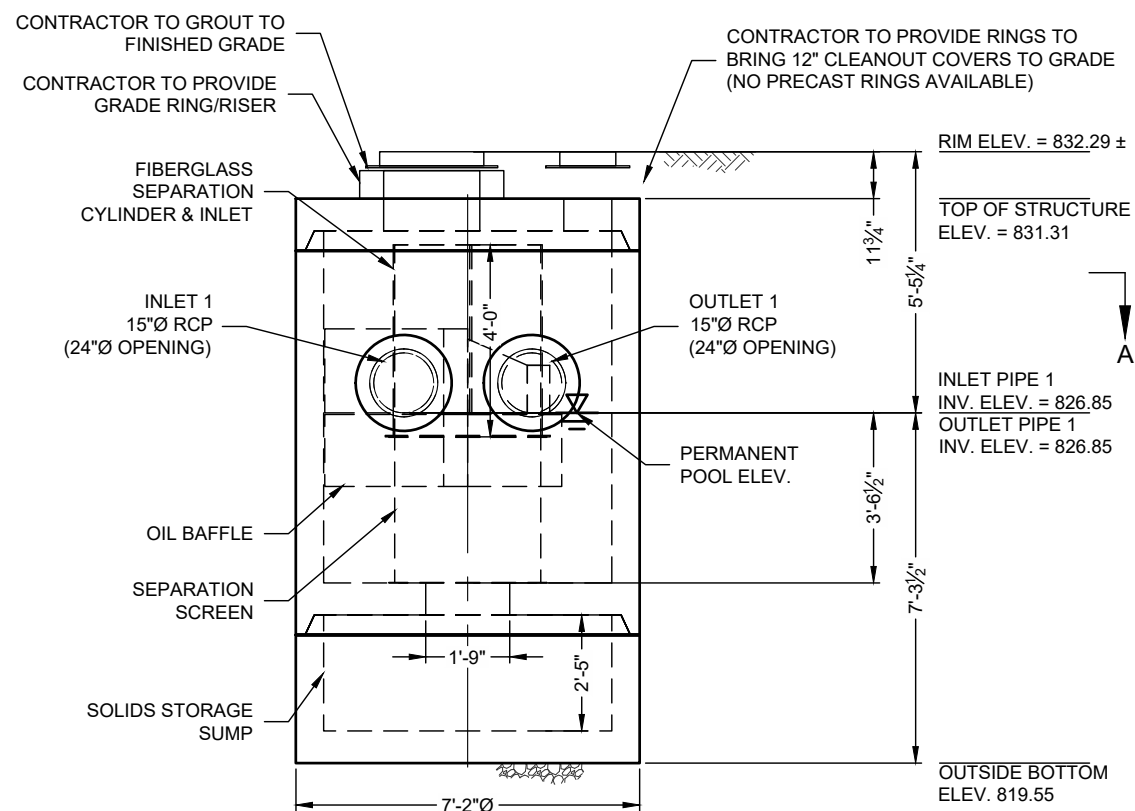


**PLAN VIEW**



**SECTION A-A**



**ELEVATION VIEW**

**MATERIAL LIST (PROVIDED BY CONTECH)**

COUNT	DESCRIPTION	INSTALLED BY
1	FIBERGLASS INLET AND CYLINDER	CONTECH
1	2400 micron, 3' O.D. x 3.04' SEP. SCREEN	CONTECH
1	SEALANT FOR JOINTS	CONTRACTOR
1	24"Ø x 4" FRAME & COVER, EJ#41600389, OR EQUIV.	CONTRACTOR
2	12"Ø x 4" FRAME & COVER, EJ#41610201, OR EQUIV.	CONTRACTOR

**GENERAL NOTES**

- CONTECH TO PROVIDE ALL MATERIALS UNLESS NOTED OTHERWISE.
- FOR FABRICATION DRAWINGS WITH DETAILED STRUCTURE DIMENSIONS AND WEIGHT, PLEASE CONTACT YOUR CONTECH ENGINEERED SOLUTIONS LLC REPRESENTATIVE. [www.ContechES.com](http://www.ContechES.com)
- CDS WATER QUALITY STRUCTURE SHALL BE IN ACCORDANCE WITH ALL DESIGN DATA AND INFORMATION CONTAINED IN THIS DRAWING. CONTRACTOR TO CONFIRM STRUCTURE MEETS REQUIREMENTS OF PROJECT.
- STRUCTURE SHALL MEET AASHTO HS-25 LOAD RATING, ASSUMING EARTH COVER OF 0' - 2', AND GROUNDWATER ELEVATION AT, OR BELOW, THE OUTLET PIPE INVERT ELEVATION. ENGINEER OF RECORD TO CONFIRM ACTUAL GROUNDWATER ELEVATION. CASTINGS SHALL MEET AASHTO M306 AND BE CAST WITH THE CONTECH LOGO.
- IF REQUIRED, PVC HYDRAULIC SHEAR PLATE IS PLACED ON SHELF AT BOTTOM OF SCREEN CYLINDER. REMOVE AND REPLACE AS NECESSARY DURING MAINTENANCE CLEANING.
- CDS STRUCTURE SHALL BE PRECAST CONCRETE CONFORMING TO ASTM C-478 AND AASHTO LOAD FACTOR DESIGN METHOD.

**INSTALLATION NOTES**

- ANY SUB-BASE, BACKFILL DEPTH, AND/OR ANTI-FLOTATION PROVISIONS ARE SITE-SPECIFIC DESIGN CONSIDERATIONS AND SHALL BE SPECIFIED BY ENGINEER OF RECORD.
- CONTRACTOR TO PROVIDE EQUIPMENT WITH SUFFICIENT LIFTING AND REACH CAPACITY TO LIFT AND SET THE CDS MANHOLE STRUCTURE.
- CONTRACTOR TO INSTALL JOINT SEALANT BETWEEN ALL STRUCTURE SECTIONS AND ASSEMBLE STRUCTURE.
- CONTRACTOR TO PROVIDE, INSTALL, AND GROUT INLET AND OUTLET PIPE(S). MATCH PIPE INVERTS WITH ELEVATIONS SHOWN. ALL PIPE CENTERLINES TO MATCH PIPE OPENING CENTERLINES.
- CONTRACTOR TO TAKE APPROPRIATE MEASURES TO ASSURE UNIT IS WATER TIGHT, HOLDING WATER TO FLOWLINE INVERT MINIMUM. IT IS SUGGESTED THAT ALL JOINTS BELOW PIPE INVERTS ARE GROUTED.

**STRUCTURE WEIGHT**

APPROXIMATE HEAVIEST PICK = 17500 LBS.  
STRUCTURE IS DELIVERED IN 3 PIECES

MAX FOOTPRINT = Ø7'-2"



This design and information shown on this drawing is provided as a service to the project owner and engineer and is not to be used for any other project without the written consent of CONTECH. Failure to comply with the design and information shown on this drawing is done at the user's own risk and CONTECH expressly disclaims any liability or responsibility for such use. If discrepancies between the supplied information upon which the drawing is based and actual field conditions are identified, the user must be responsible for the discrepancy and must be responsible for re-evaluation of the design. CONTECH does not accept any liability for design, based on, missing, incomplete or inaccurate information supplied by others.

MARK	DATE	REVISION DESCRIPTION	BY

CDS3030-6-C - 643654-10  
LESOURDSVILLE WEST CHESTER  
ROAD AT BECKETT RIDGE  
HAMILTON, OH  
for SYSTEM: BMP1

**CONTECH**  
ENGINEERED SOLUTIONS LLC  
www.ContechES.com  
605 Global Way Suite 113, Luthicum, MD 21090  
866-740-3318 410-798-5505 866-376-8511 FAX

**GDS**  
THIS PRODUCT MAY BE REPRODUCED BY ONE OR MORE OF THE FOLLOWING COMPANIES OR OTHER PARTIES WITHOUT PERMISSION.

DATE: 05/04/20	SCALE: 1/4" = 1'-0"
DESIGNED: MAK	DRAWN: MAK
CHECKED: ###	APPROVED: ###
PROJECT No.: 643654	SEQUENCE No.: 10
SHEET: 1 OF 1	

NCI  
LAYOUT 1A  
3030-6-FGIS  
5824 / NORW10