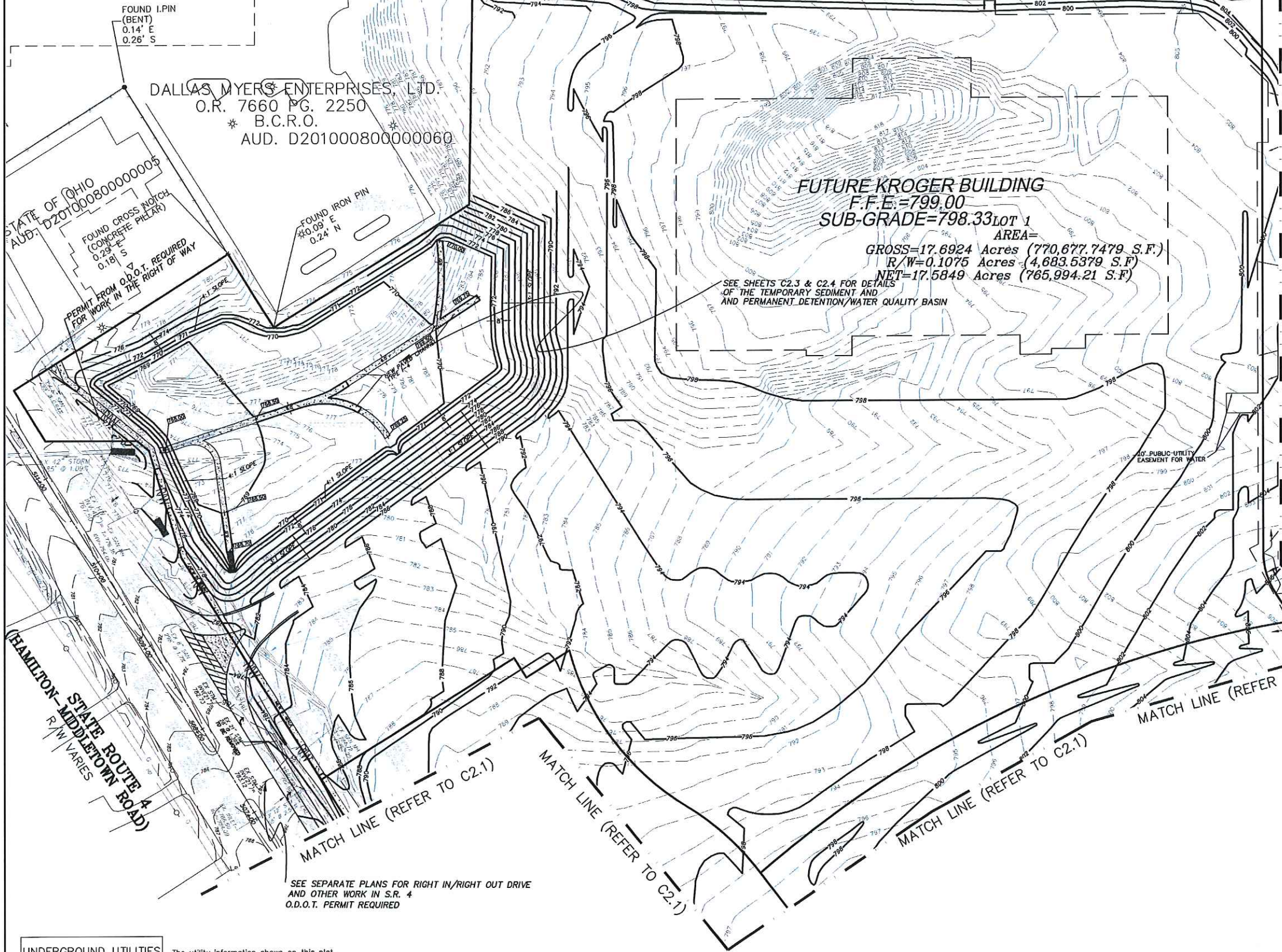


SEC. 4
SEC. 10

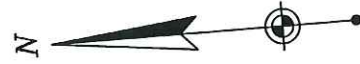
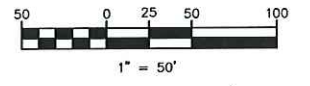


DALLAS MYERS ENTERPRISES, L.T.D.
O.R. 7660 PG. 2250
* B.C.R.O.
AUD. D201000800000060

FUTURE KROGER BUILDING
F.F.E.=799.00
SUB-GRADE=798.33
LOT 1
AREA=
GROSS=17.6924 Acres (770,677.7479 S.F.)
R/W=0.1075 Acres (4,683.5379 S.F.)
NET=17.5849 Acres (765,994.21 S.F.)

SEE SHEETS C2.3 & C2.4 FOR DETAILS OF THE TEMPORARY SEDIMENT AND AND PERMANENT DETENTION/WATER QUALITY BASIN

GRAPHIC SCALE



PROJECT BENCHMARK

FOUND IRON PIN IN MONUMENT BOX
AT SOUTHEAST CORNER OF SECTION 10
IRON PIN ELEVATION=793.32

PROPOSED CONDITIONS LEGEND

- INDICATES PROPOSED CONTOURS
- INDICATES PROPOSED ASPHALT GRADES
- INDICATES PROPOSED DRAINAGE FLOW ROUTE

EXISTING CONDITIONS LEGEND

- INDICATES EXISTING CONTOUR ELEVATIONS



• Engineers
• Surveyors

803 Compton Road
Cincinnati, Ohio 45231
513-521-4760
Fax # 521-2439

Date: DEC. 10, 2015
Scale: 1" = 50'
Job No: 7625

Revisions	
No.	Date

ROUGH GRADING PLAN

KYLES STATION SUBDIVISION
STATE RT. 4 & KYLES STATION ROAD
SITUATED IN
SECTION 10, TOWN 2, RANGE 3
LIBERTY TOWNSHIP, BUTLER COUNTY, OHIO

ACAD FILENAME: 7625_BASE.DWG



Drawn By: J.KAFFENBERGER

SHEET **C2.0**
3 OF 43
Job No: 7625-15

UNDERGROUND UTILITIES
Ohio Utilities Protection Service
Call 811
before you dig
NON-MEMBERS MUST BE CALLED DIRECTLY

The utility information shown on this plot, prepared by Thomas Graham Associates, Inc., was obtained from existing records. It is the contractor's responsibility to verify their existence and location, and to contact the appropriate utility company for field locations.

SEE SEPARATE PLANS FOR RIGHT IN/RIGHT OUT DRIVE AND OTHER WORK IN S.R. 4
O.D.O.T. PERMIT REQUIRED

MATCH LINE (REFER TO C2.1)

MATCH LINE (REFER TO C2.1)

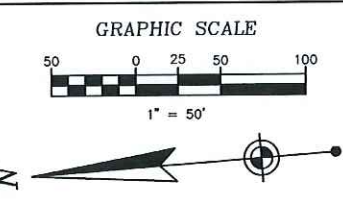
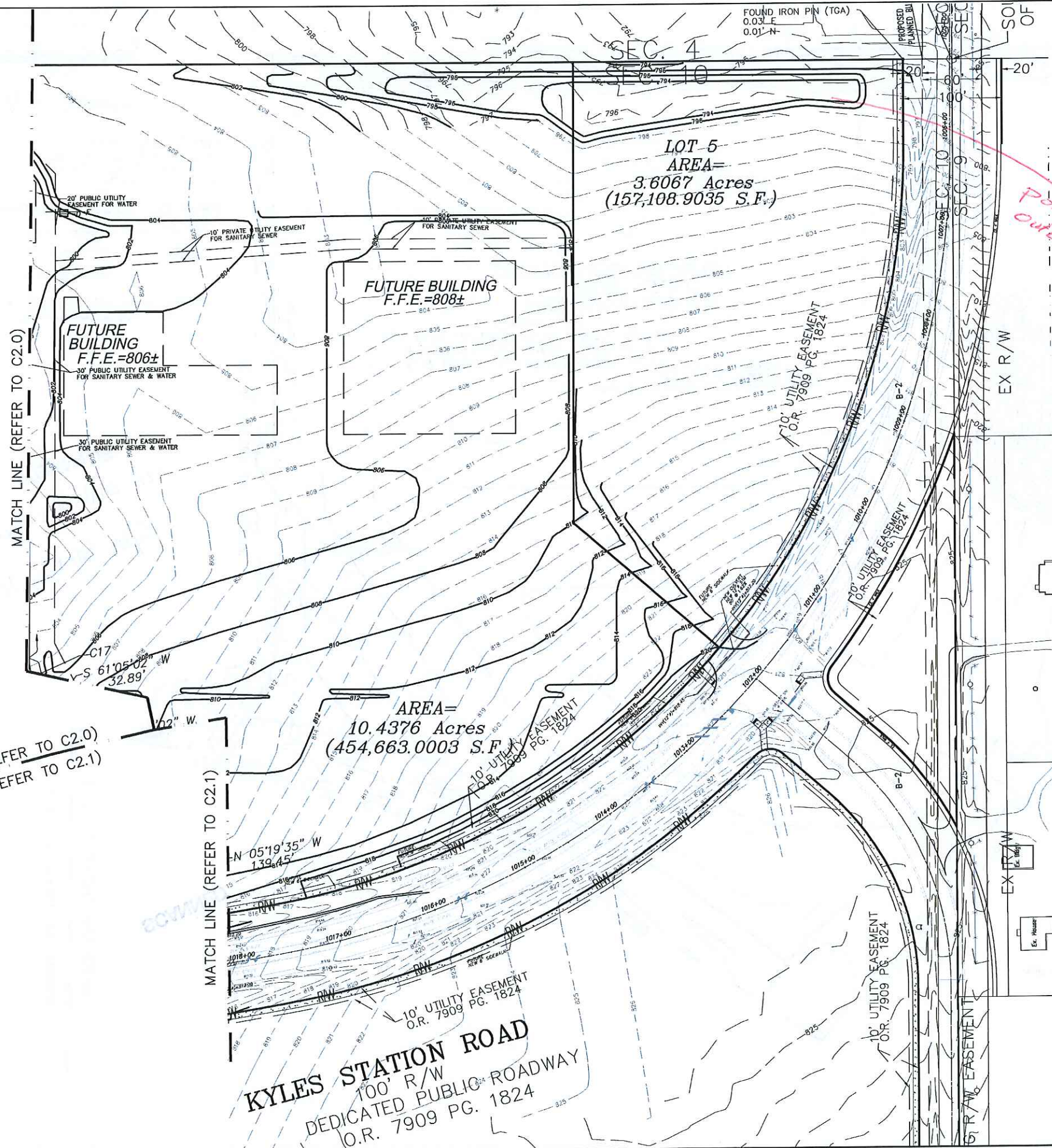
MATCH LINE (REFER TO C2.1)

MATCH LINE (REFER TO C2.1)

MATCH LINE (REFER TO C2.2)

MATCH LINE (REFER TO C2.1)

MATCH LINE (REFER TO C2.2)



PROJECT BENCHMARK
 FOUND IRON PIN IN MONUMENT BOX
 AT SOUTHEAST CORNER OF SECTION 10
 IRON PIN ELEVATION=793.32

PROPOSED CONDITIONS LEGEND
 — 806 — INDICATES PROPOSED CONTOURS
 [806.50] + INDICATES PROPOSED ASPHALT GRADES
 —> INDICATES PROPOSED DRAINAGE FLOW ROUTE

EXISTING CONDITIONS LEGEND
 - - - 790 - - - INDICATES EXISTING CONTOUR ELEVATIONS

tga
THOMAS GRAHAM ASSOCIATES, INC.
 • Engineers
 • Surveyors
 803 Compton Road
 Cincinnati, Ohio 45231
 513-521-4760
 Fax # 521-2439

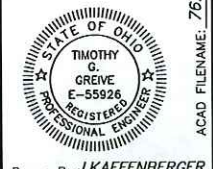
Date: DEC. 10, 2015
 Scale: 1" = 50'
 Job No: 7625

Revisions	
No.	Date

ROUGH GRADING PLAN
 KYLES STATION SUBDIVISION
 STATE RT. 4 & KYLES STATION ROAD
 SITUATED IN
 SECTION 10, TOWN 2, RANGE 3
 LIBERTY TOWNSHIP, BUTLER COUNTY, OHIO

The utility information shown on this plot, prepared by Thomas Graham Associates, Inc., was obtained from existing records. It is the contractor's responsibility to verify their existence and location, and to contact the appropriate utility company for field locations.

UNDERGROUND UTILITIES
 Ohio Utilities Protection Service
Call 811
 before you dig
 NON-MEMBERS MUST BE CALLED DIRECTLY

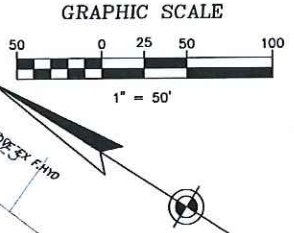
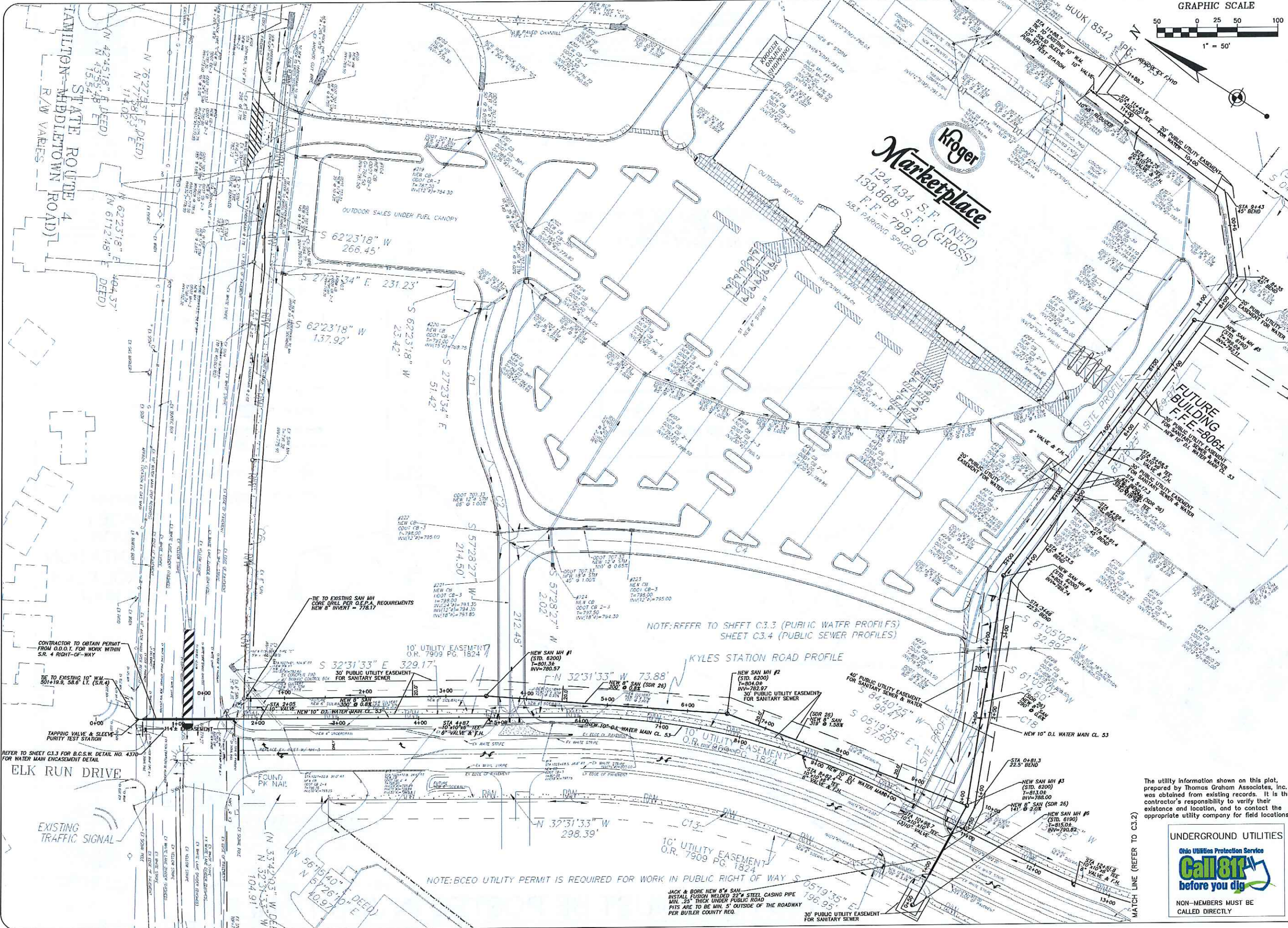


Drawn By: J.KAFFENBERGER

SHEET C2.2
 5 OF 43

Job No: 7625-15

ACAD FILENAME: 7625_BASE.DWG



tga
THOMAS GRAHAM ASSOCIATES, INC.
 • Engineers
 • Surveyors

803 Compton Road
 Cincinnati, Ohio 45231
 513-521-4760
 Fax # 521-2439

Date: DEC. 10, 2015
 Scale: 1" = 50'
 Job No: 7625

Revisions	
No.	Date

PUBLIC WATER & SEWER PLAN
 KYLES STATION SUBDIVISION
 STATE RT. 4 & KYLES STATION ROAD
 SITUATED IN
 SECTION 10, TOWN 2, RANGE 3
 LIBERTY TOWNSHIP, BUTLER COUNTY, OHIO

provide pipe sizing calculations

NOTE: REFER TO SHEET C3.3 (PUBLIC WATER PROFILES)
 SHEET C3.4 (PUBLIC SEWER PROFILES)

KYLES STATION ROAD PROFILE

NOTE: BCEO UTILITY PERMIT IS REQUIRED FOR WORK IN PUBLIC RIGHT OF WAY

JACK & BORE NEW 8" SAN.
 INSTALL FUSION WELDED 22" STEEL CASING PIPE
 MIN. 25" THICK UNDER PUBLIC ROAD
 FITS ARE TO BE MIN. 5' OUTSIDE OF THE ROADWAY
 PER BUTLER COUNTY REQ.

The utility information shown on this plot, prepared by Thomas Graham Associates, Inc., was obtained from existing records. It is the contractor's responsibility to verify their existence and location, and to contact the appropriate utility company for field locations.

UNDERGROUND UTILITIES
 Ohio Utilities Protection Service
Call 811
 before you dig
 NON-MEMBERS MUST BE CALLED DIRECTLY



Drawn By: J. KAFFENBERGER
SHEET C3.1
13 OF 43
 Job No: 7625-15

ACAD FILENAME: 7625_BASE.DWG

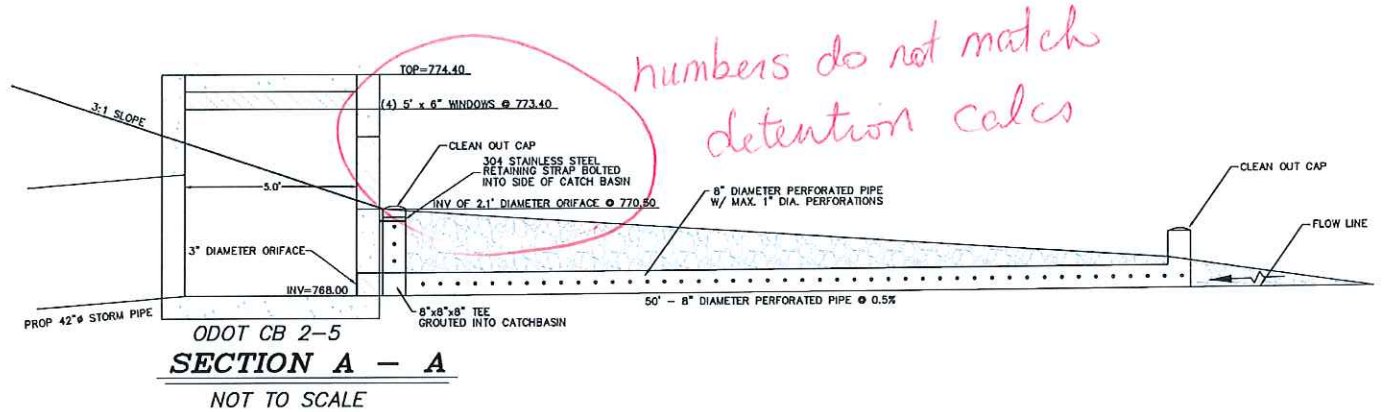
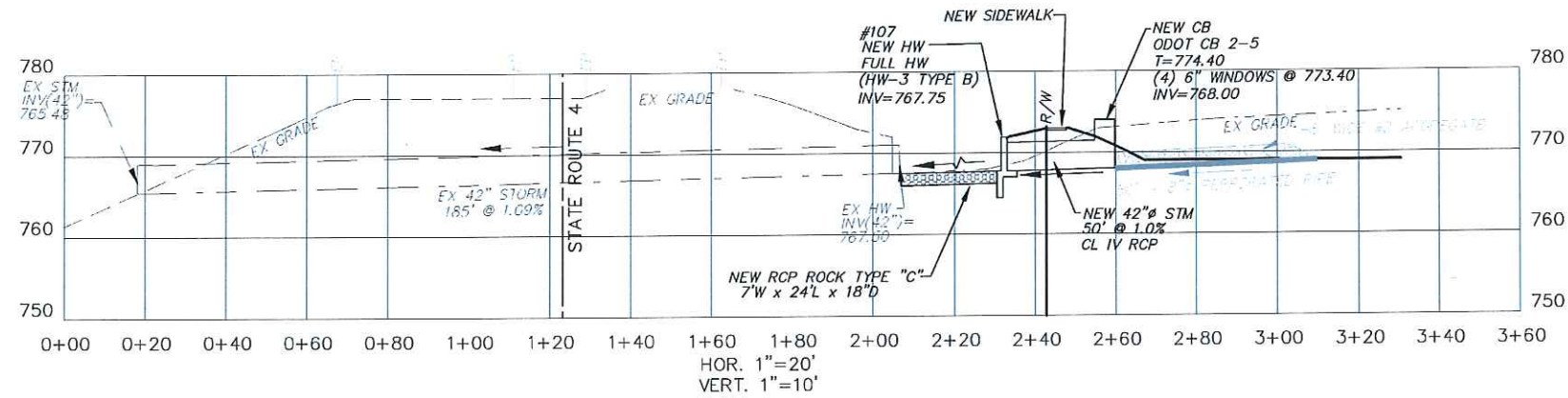
Date: DEC. 10, 2015

Scale: AS NOTED

Job No: 7625

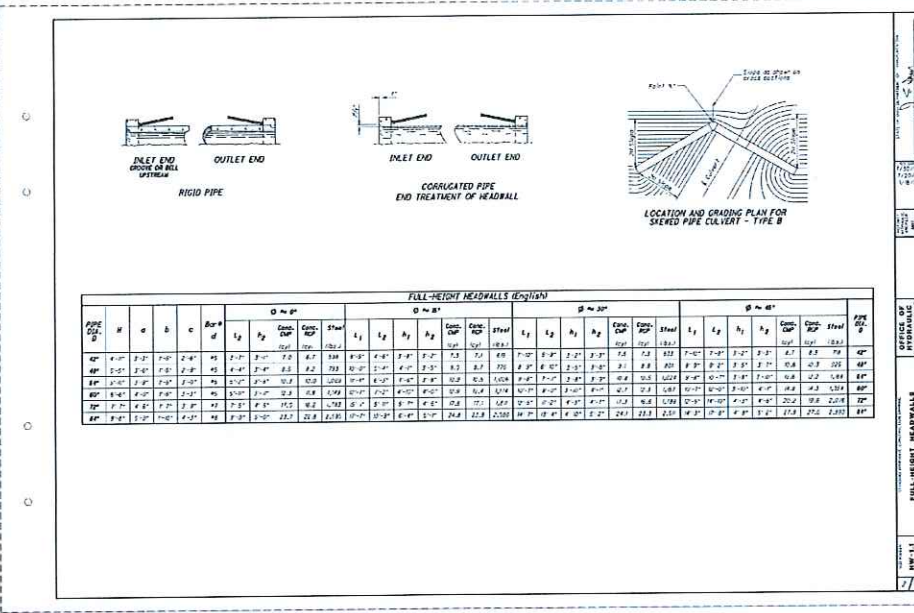
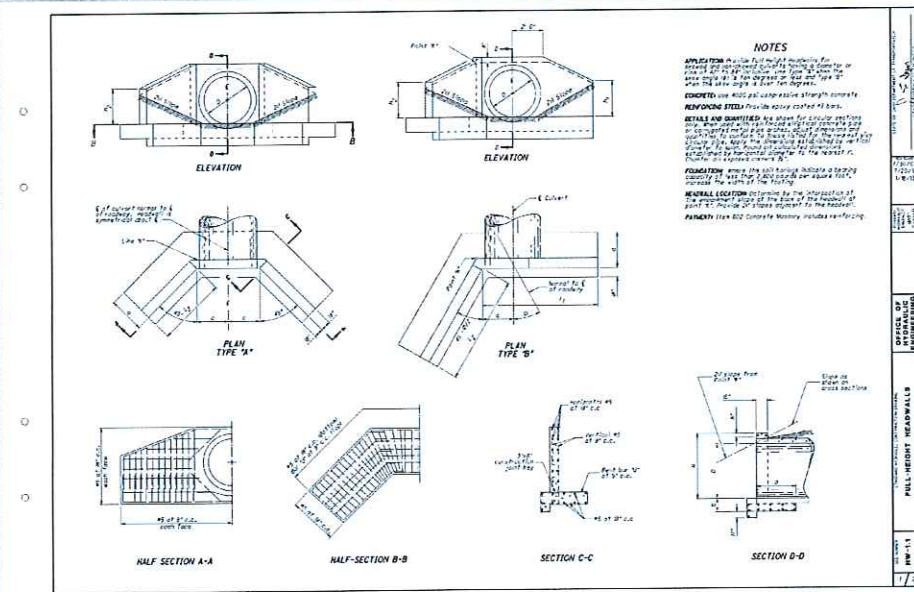
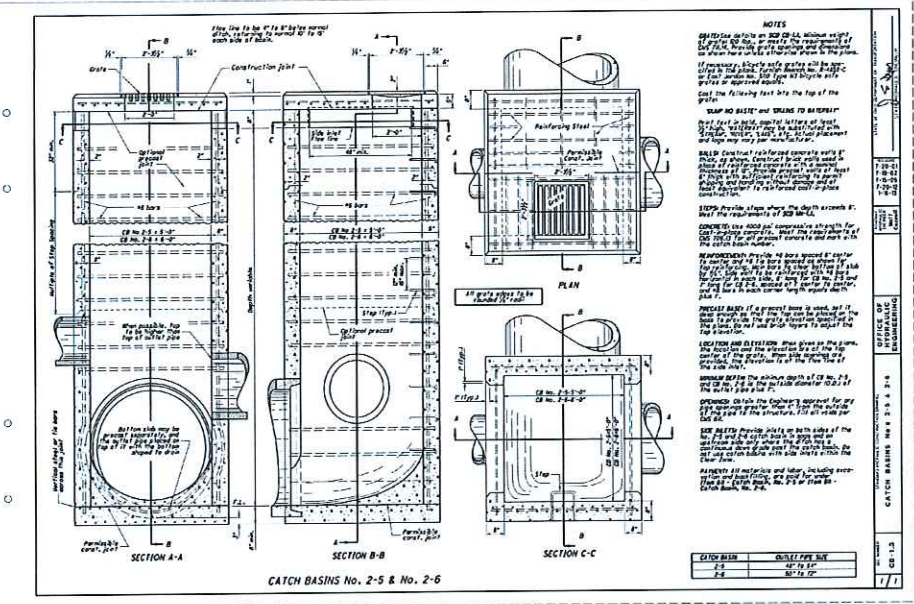
Revisions

No.	Date
-----	------



*numbers do not match
 detention calcs*

NOTE: THIS IS THE FINAL CONFIGURATION FOR THE STORM WATER QUALITY/DETENTION POND.
 THIS STEP TO BE COMPLETED ONCE THE SITE IS STABILIZED AND THE SEDIMENT IS REMOVED FROM THE BASIN
 SEE SHEET EC1.3 FOR THE CONFIGURATION OF THE OUTLET STRUCTURE FOR THE SEDIMENT CONTROL DURING CONSTRUCTION PHASE



**DETAILS & NOTES
 STORMWATER DETENTION BASIN**
 KYLES STATION SUBDIVISION
 STATE RT. 4 & KYLES STATION ROAD
 SITUATED IN
 SECTION 10, TOWN 2, RANGE 3
 LIBERTY TOWNSHIP, BUTLER COUNTY, OHIO

STATE OF OHIO
 TIMOTHY G. GREWE
 E-55926
 REGISTERED PROFESSIONAL ENGINEER

Drawn By: J. KAFFENBERGER
 SHEET **C2.4**
 7 OF 43
 Job No: 7625-15

The utility information shown on this plot, prepared by Thomas Graham Associates, Inc., was obtained from existing records. It is the contractor's responsibility to verify their existence and location, and to contact the appropriate utility company for field locations.

UNDERGROUND UTILITIES
 Ohio Utilities Protection Service
Call 811
 before you dig
 NON-MEMBERS MUST BE CALLED DIRECTLY

The utility information shown on this plot, prepared by Thomas Graham Associates, Inc., was obtained from existing records. It is the contractor's responsibility to verify their existence and location, and to contact the appropriate utility company for field locations.

UNDERGROUND UTILITIES

Ohio Utilities Protection Service
Call 811
before you dig

NON-MEMBERS MUST BE CALLED DIRECTLY



THOMAS GRAHAM ASSOCIATES, INC.
 • Engineers
 • Surveyors

803 Compton Road
 Cincinnati, Ohio 45231
 513-521-4760
 Fax # 521-2439

Date: DEC. 10, 2015

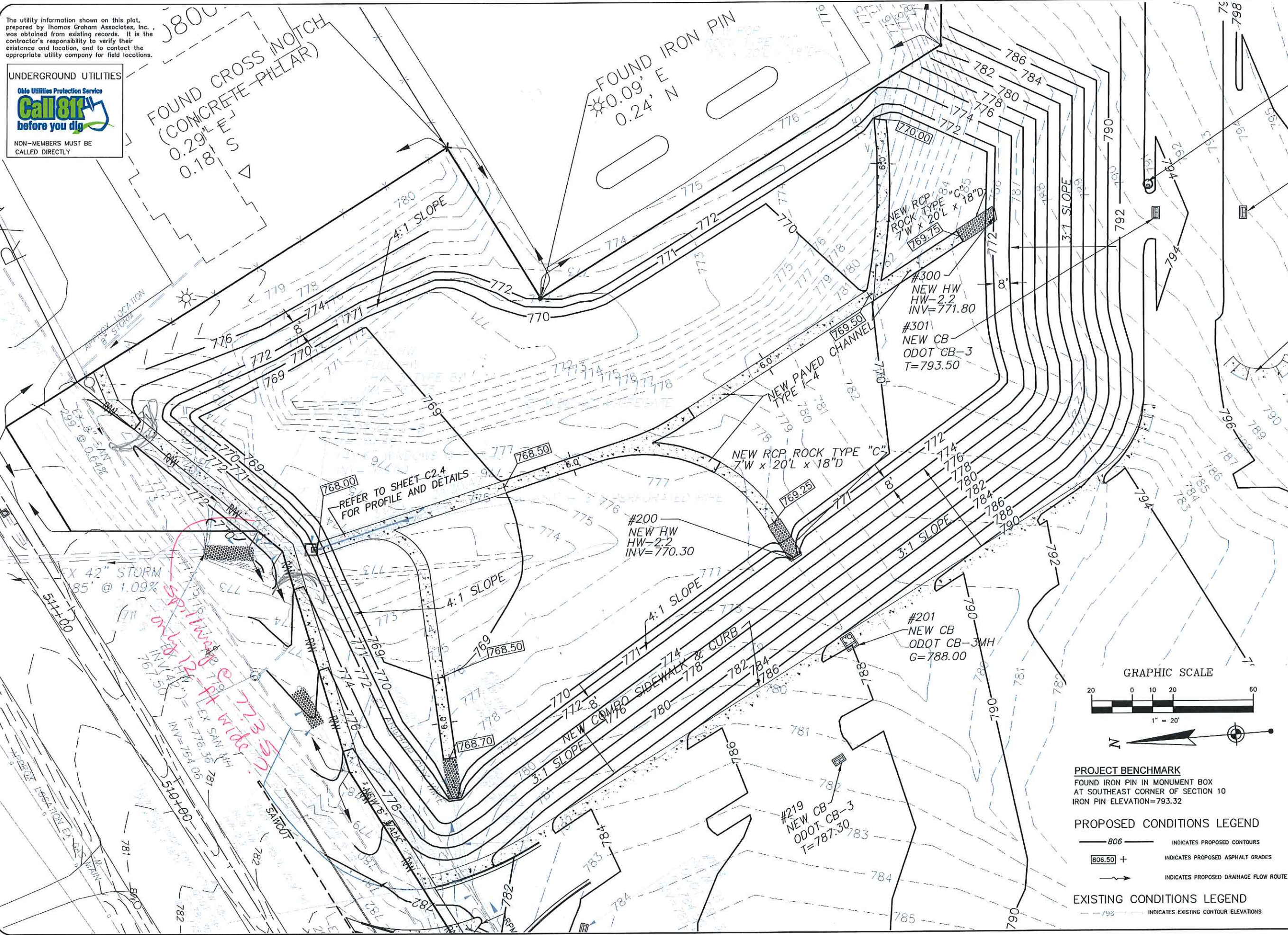
Scale: 1" = 20'

Job No: 7625

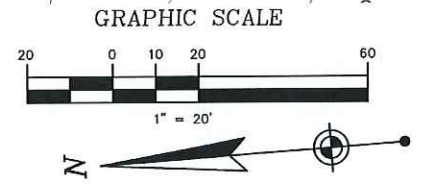
Revisions	
No.	Date

**ROUGH GRADING PLAN
 STORMWATER DETENTION BASIN**

KYLES STATION SUBDIVISION
 STATE RT. 4 & KYLES STATION ROAD
 SITUATED IN SECTION 10, TOWN 2, RANGE 3
 LIBERTY TOWNSHIP, BUTLER COUNTY, OHIO



REFER TO SHEET C2.4 FOR PROFILE AND DETAILS



PROJECT BENCHMARK
 FOUND IRON PIN IN MONUMENT BOX AT SOUTHEAST CORNER OF SECTION 10
 IRON PIN ELEVATION=793.32

- PROPOSED CONDITIONS LEGEND**
- 806 ——— INDICATES PROPOSED CONTOURS
 - 806.50 + INDICATES PROPOSED ASPHALT GRADES
 - INDICATES PROPOSED DRAINAGE FLOW ROUTE

- EXISTING CONDITIONS LEGEND**
- 98- - - - - INDICATES EXISTING CONTOUR ELEVATIONS



Drawn By: J.KAFFENBERGER
SHEET C2.3
 6 OF 43
 Job No: 7625-15

ACAD FILENAME: 7625_BASE.DWG