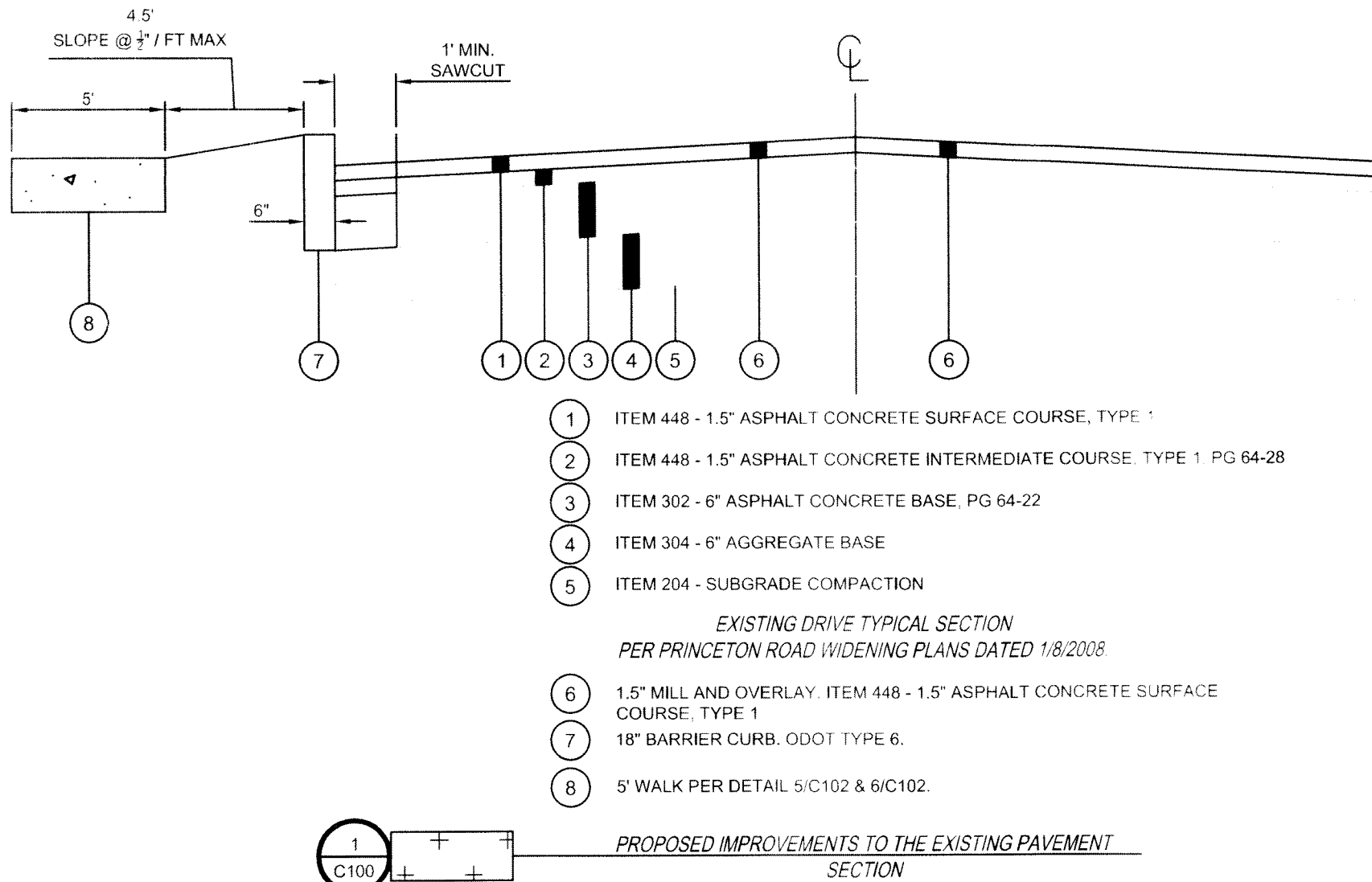
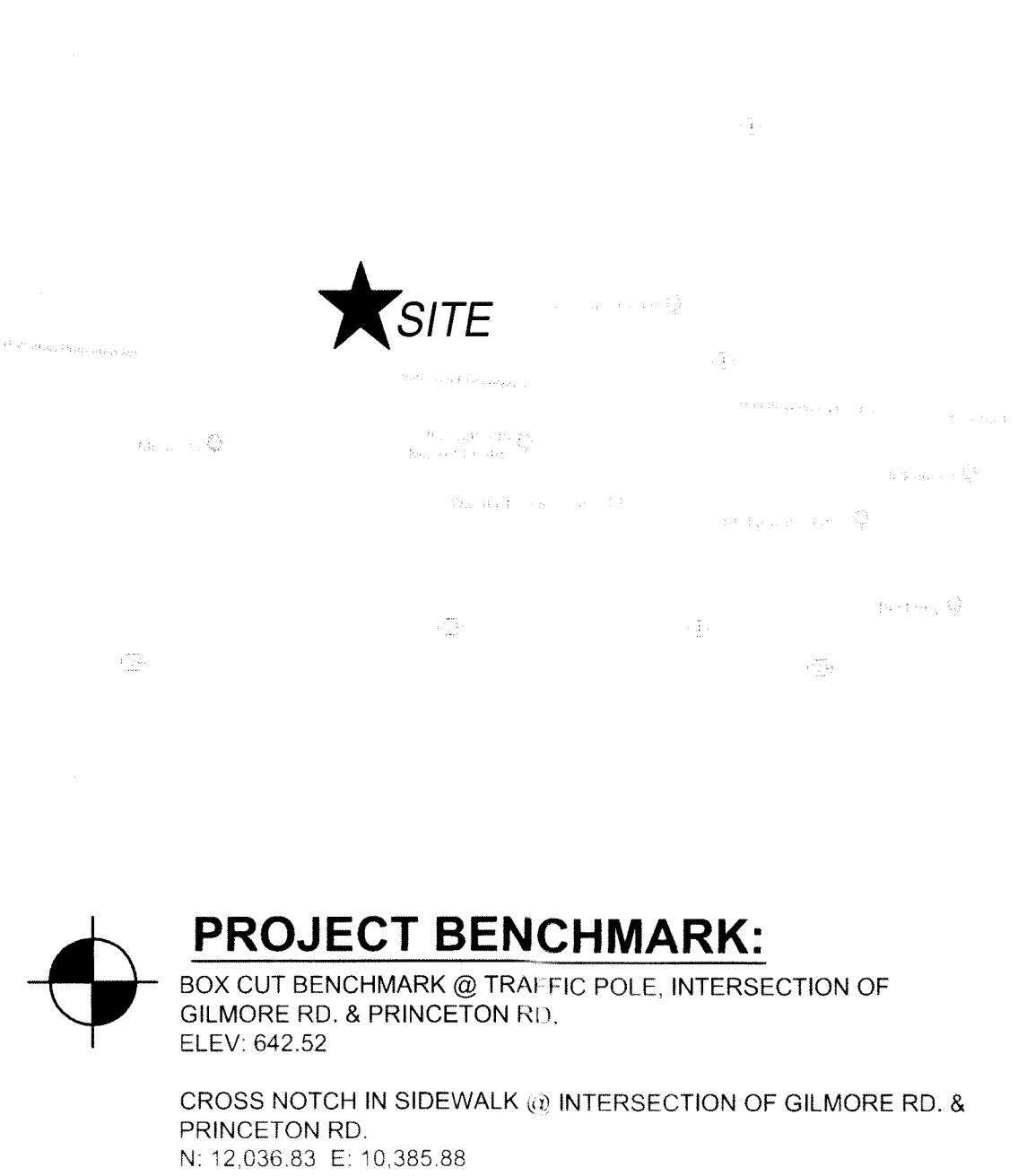


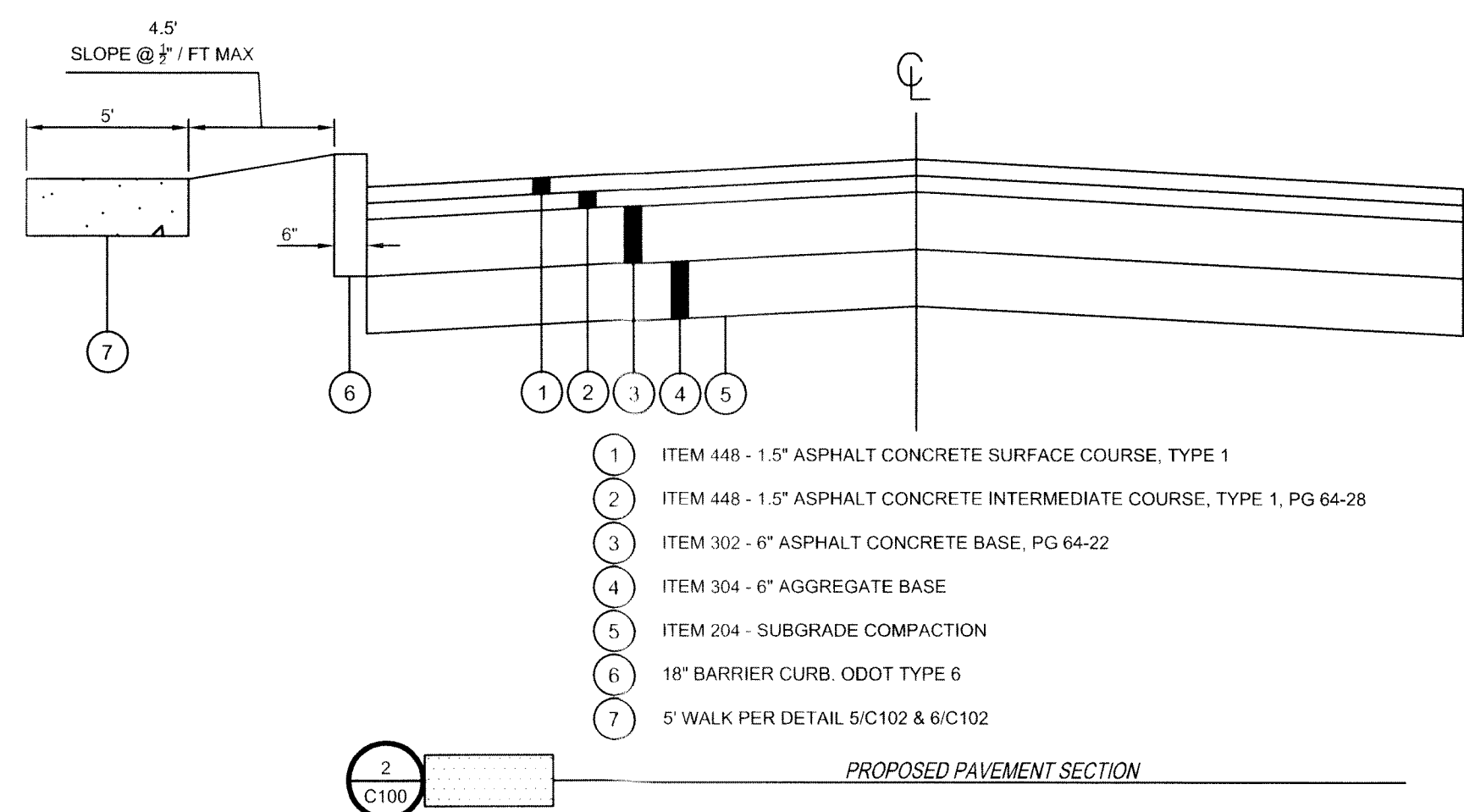
18. SANITARY SEWER IS TO BE BEDDED WITH CLEAN GRANULAR MATERIAL--AGGREGATES NOT TO BE LARGER THAN 3/4" AND NOT SMALLER THAN NO. 8 SIEVE, FREE OF SILT AND FINES, AASHTO M43 SIZE #67, 7 OR 8. BEDDING TO BE MINIMUM OF 6" BELOW & 12" ABOVE THE PIPE.



SECTIONS 20 & 26, T-2, R-3, BTM
FAIRFIELD TOWNSHIP BUTLER COUNTY, OHIO



ⓐ ITEM 644-LANE ARROWS, WHITE



DRAWING INDEX	
SHEET	TITLE
C100	TITLE SHEET
C101	GENERAL NOTES & DETAILS
C102	GENERAL NOTES & DETAILS
C110	SURVEY BASEMAP
C140	LOCATION & UTILITY PLAN
C141	UTILITY PROFILES & DETAILS
C150	GRADING PLAN & SWPPP
C151	EROSION CONTROL NOTES & DETAILS
C152	EROSION CONTROL NOTES & DETAILS
C153	SWPPP LOG

FIRST CHURCH OF GOD
OF HAMILTON OHIO
3100 PRINCETON RD.
HAMILTON, OHIO 45011
CONTACT: DREW WILKERSON
513-867-9961

THE KLEINGERS GROUP
6219 CENTRE PARK DRIVE
WEST CHESTER, OHIO 45069
(513) 779-7851

C100

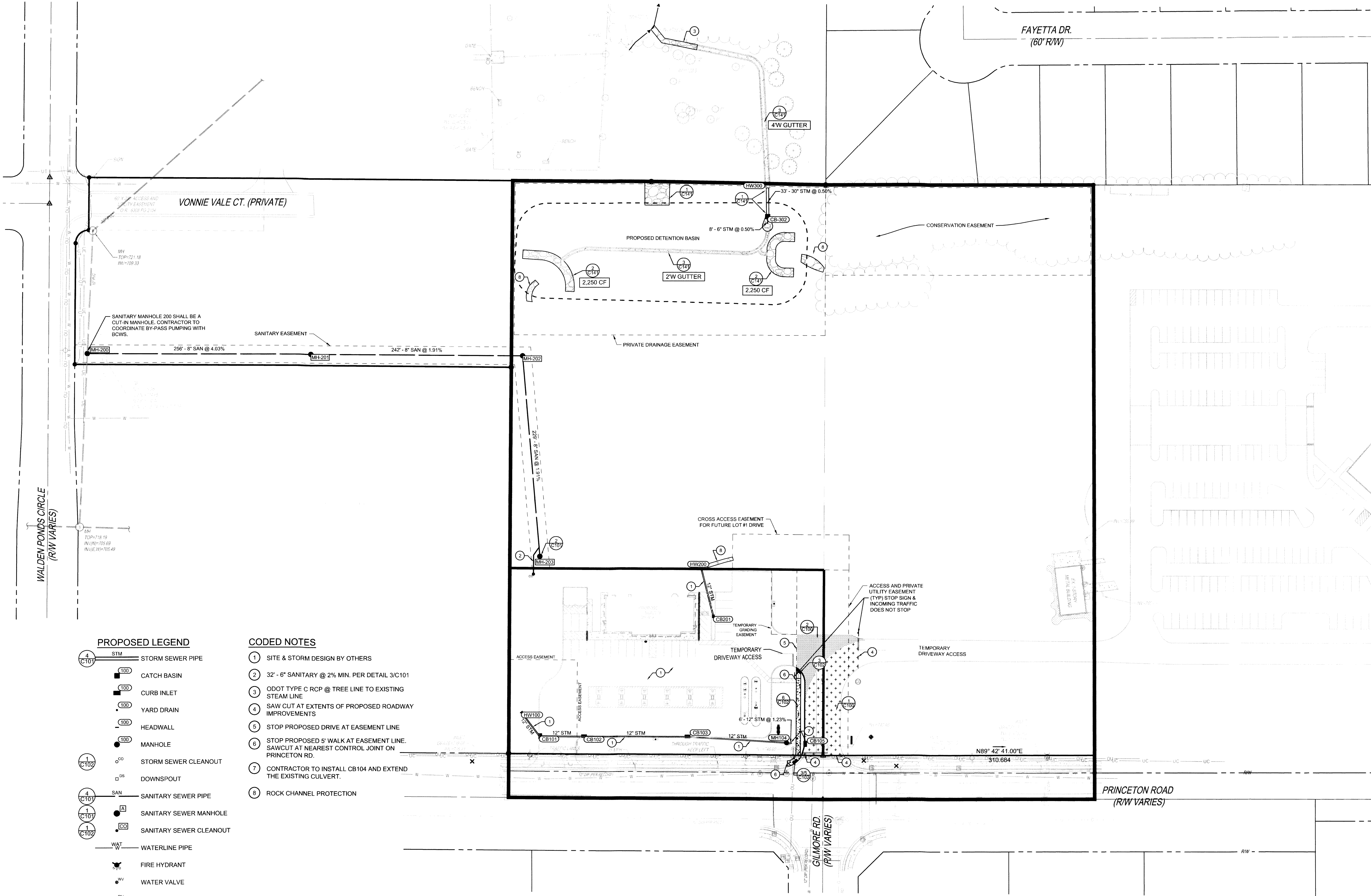
6
C102

SLAB WALK DETAIL

N.T.S.

*WHERE POSSIBLE, POUR RAMP AREA INTEGRAL WITH THE CURB, OTHERWISE USE 6" THICK WALK.





- PROPOSED LEGEND**
- STM STORM SEWER PIPE
 - 100 CATCH BASIN
 - 100 CURB INLET
 - 100 YARD DRAIN
 - 100 HEADWALL
 - 100 MANHOLE
 - CO STORM SEWER CLEANOUT
 - DS DOWNSPOUT
 - SAN SANITARY SEWER PIPE
 - A SANITARY SEWER MANHOLE
 - CO SANITARY SEWER CLEANOUT
 - WAT WATERLINE PIPE
 - Fire Hydrant
 - WV WATER VALVE
 - PV POST INDICATOR VALVE
 - FDC FIRE DEPARTMENT CONNECTION
 - ASPHALT PAVEMENT IMPROVEMENTS PER DETAIL 1/C100
 - ASPHALT PAVEMENT PER DETAIL 2/C100

- CODED NOTES**
- SITE & STORM DESIGN BY OTHERS
 - 32" - 6" SANITARY @ 2% MIN. PER DETAIL 3/C101
 - ODOT TYPE C RCP @ TREE LINE TO EXISTING STEAM LINE
 - SAW CUT AT EXTENTS OF PROPOSED ROADWAY IMPROVEMENTS
 - STOP PROPOSED DRIVE AT EASEMENT LINE
 - STOP PROPOSED 5' WALK AT EASEMENT LINE. SAWCUT AT NEAREST CONTROL JOINT ON PRINCETON RD.
 - CONTRACTOR TO INSTALL CB104 AND EXTEND THE EXISTING CULVERT.
 - ROCK CHANNEL PROTECTION

NOTE:
UNDERGROUND UTILITIES ARE PLOTTED FROM A
COMPILATION OF AVAILABLE RECORD INFORMATION. GIS AND
SURFACE INDICATIONS OF UNDERGROUND STRUCTURES
AND MAY NOT BE INCLUSIVE. PRECISE LOCATIONS AND THE
EXISTENCE OR NON EXISTENCE OF UNDERGROUND UTILITIES
CANNOT BE VERIFIED. PLEASE NOTIFY THE KENTUCKY
UTILITY PROTECTION SERVICE AT 1-800-752-6007 BEFORE
ANY PERIOD OF EXCAVATION OR CONSTRUCTION ACTIVITY.

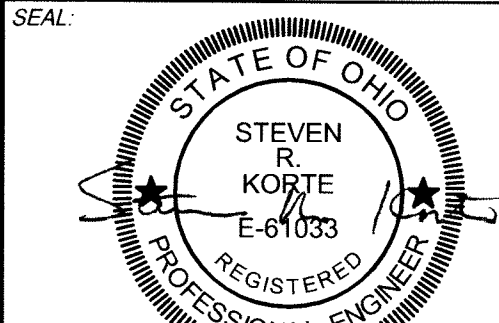


THE KLEINGERS GROUP

CIVIL ENGINEERING SURVEYING LANDSCAPE ARCHITECTURE

www.kleingers.com

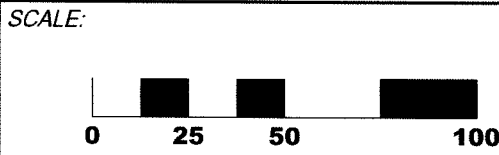
6305 Centre Park Dr.
West Chester, OH 45069
513.779.7851



NO.	DATE	DESCRIPTION
1	12/21/20	CONSTRUCTION DOCUMENTS
2	03/29/21	BID SET

BRIDGEWATER CHURCH SUBDIVISION
FAIRFIELD TOWNSHIP
BUTLER COUNTY, OHIO

PROJECT NO: 180075.000
DATE: 12/18/2020



SHEET NAME:
LOCATION & UTILITY PLAN (BASE BID)

SHEET NO:
C140