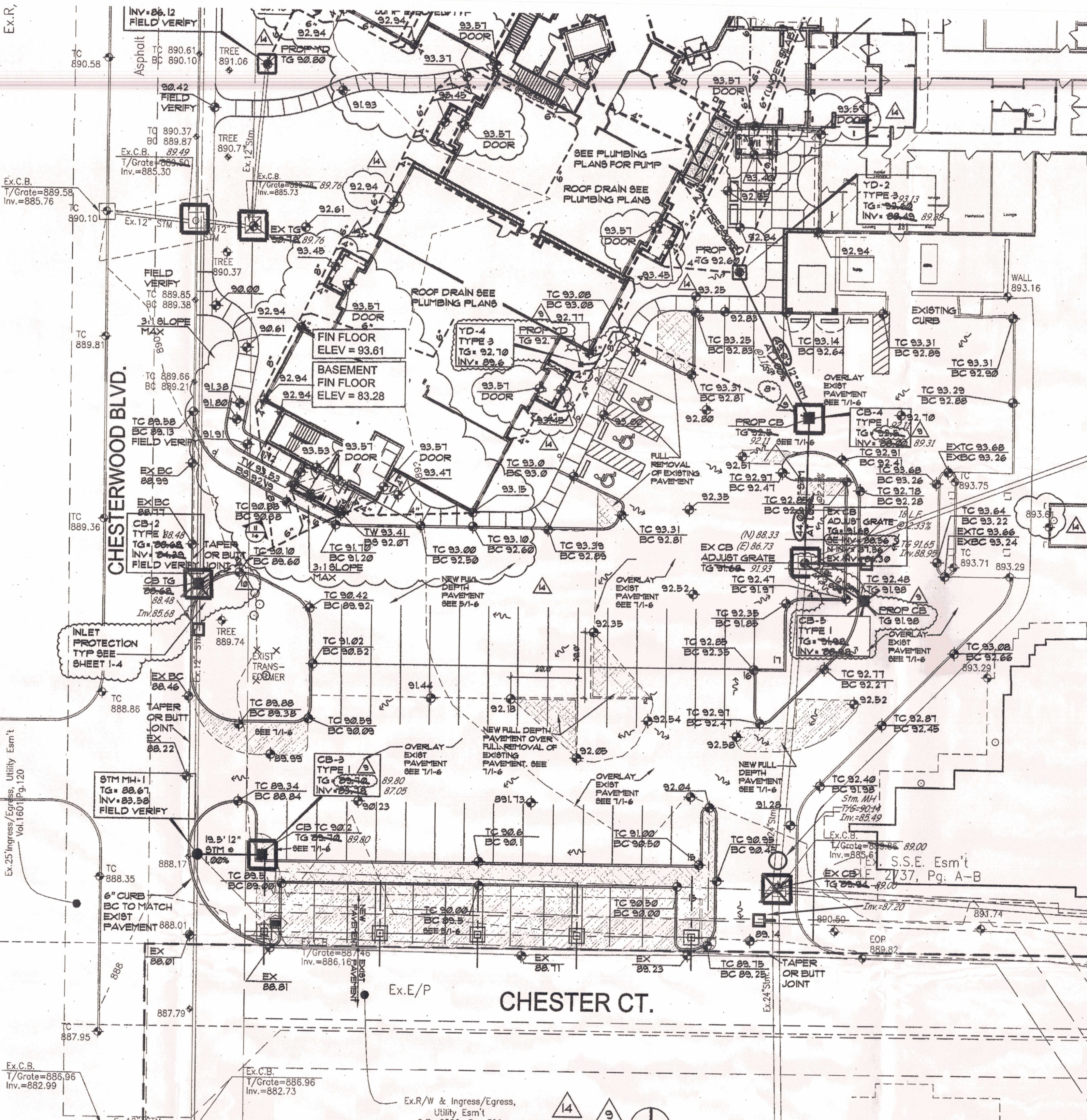
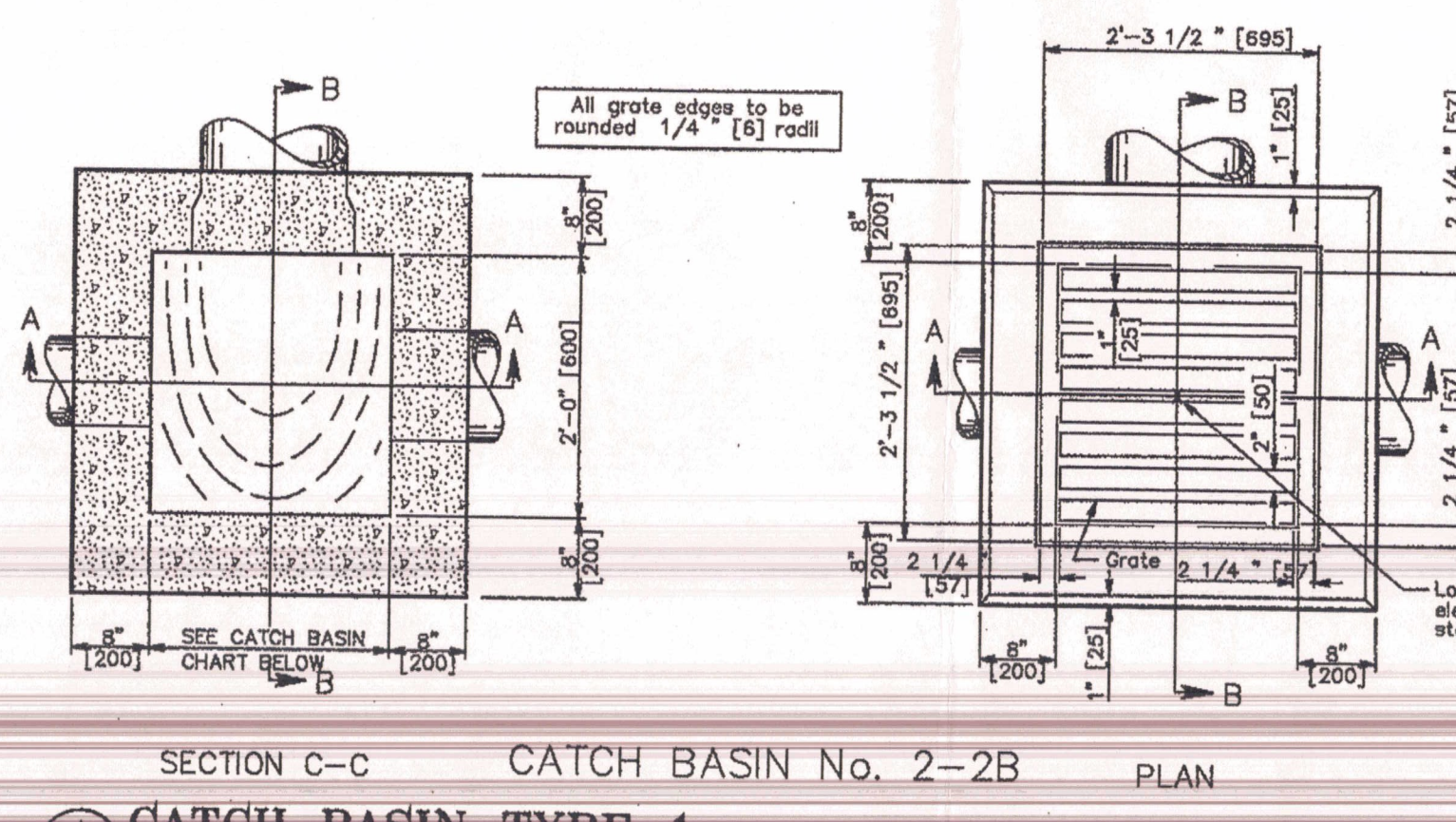
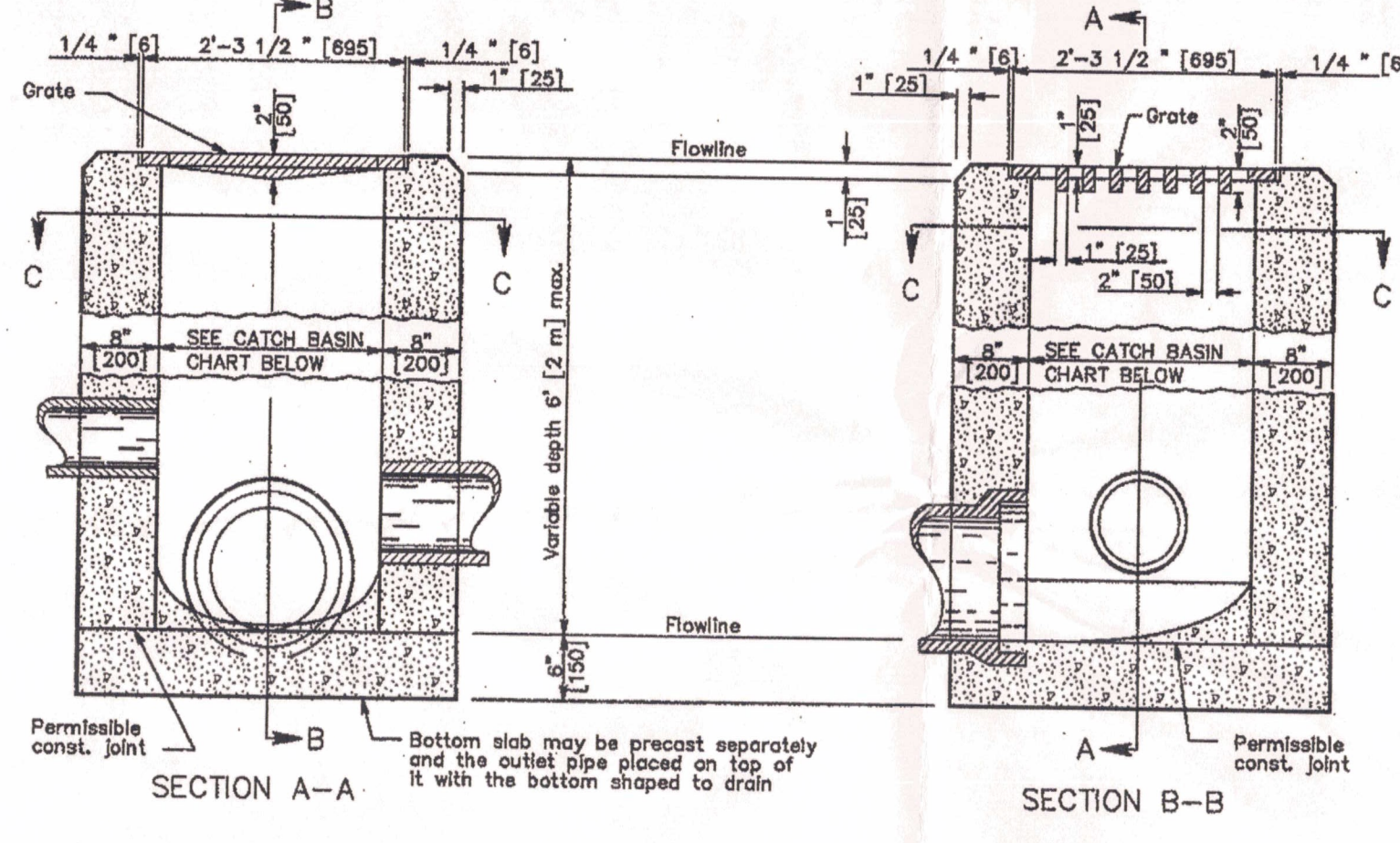


GRADING / STORM WATER
SCALE: 1"=20' NORTH PARKING, MAIN STREET & WING A



GRADING / STORM WATER
SCALE: 1"=20' SOUTH PARKING & WING B



NOTES

GRATE: The design shall be essentially the same and equally as strong as the one shown (see construction information table), or meet the requirements of CMS 711.14. Grate openings and dimensions shall not differ from those shown unless otherwise shown in the plans.

If necessary, bicycle safe grates shall be specified in the plans. Bicycle safe grates shall be Inman No. 1 in the plans, or East Jordan No. 5110 Type M3 or approved equal.

As of January 1, 2003, the following text shall be cost into the top of the grate:

"DUMP NO WASTE" and "DRAIN TO WATERWAY"

Test shall be printed in bold, capital letters with a minimum height of 1/2". "WATERWAY" may be substituted with "STREAM", "RIVER", "LAKE", etc. Actual placement and logo may vary per manufacturer.

WALLS: Brick or cast-in-place walls have a nominal thickness of 8" (200). Precast walls shall have a minimum thickness of 8" (200) and be reinforced sufficiently to permit shipping and handling without damage.

CONCRETE: Cast-in-place concrete is to be Class C. All precast concrete shall meet the requirements of CMS 706.13 and be marked with the catch basin number.

PRECAST BASE: If a precast base is used, it shall be set deep enough so that the top can be placed on the base to provide the grate elevation specified in the plans. Layers of brick shall not be used to adjust the top elevation.

LOCATION AND ELEVATION: When given on the plans, location and elevation are at the top center of the grate. When site opening are provided, the elevation shall be at the flow line of the side inlet.

MINIMUM DEPTH: The minimum depth for CS No. 2-2B shall be the O.D. of the outlet pipe plus 4" (100).

2-2B GRATE ELEVATION: Grate elevation is to be placed on 8" (200) to 12" (300) below normal ditch side to side. When the inlet opening is to be filled with grate per CMS 601.

OPENINGS: Pipe openings shall be the O.D. of the pipe being supplied plus 2" (50) when fabricated with grate per CMS 601.

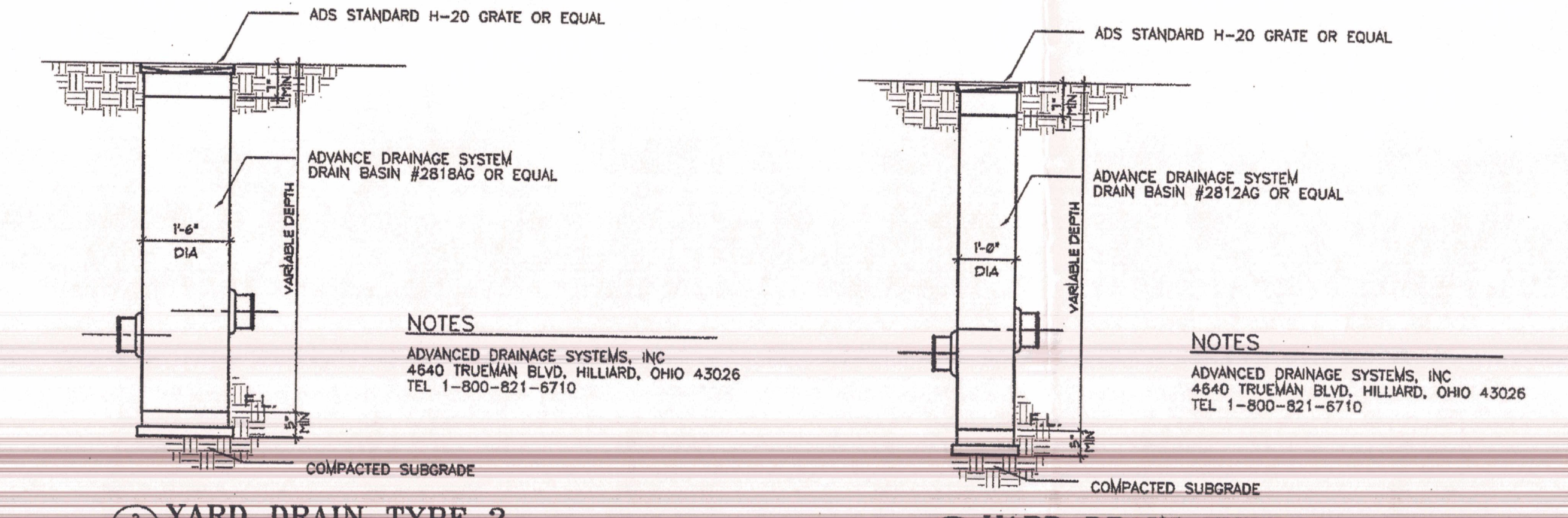
PAYMENT: All materials and labor, including excavation and backfilling, shall be paid for under Item 604 - Catch Basins, No. 2-2B.

CONSTRUCTION INFORMATION

Minimum weight (mass) of grates, 120 lbs. (54 kg)

CATCH BASIN CHART

INTERIOR DIMENSION	OUTLET PIPE SIZE
2'-0"	12" to 24"
2'-3"	12"



YARD DRAIN TYPE 2
SCALE: 1"=30'-0"

YARD DRAIN TYPE 3
SCALE: 1"=30'-0"

CATCH BASIN TYPE 1
SCALE: 1"=30'-0"

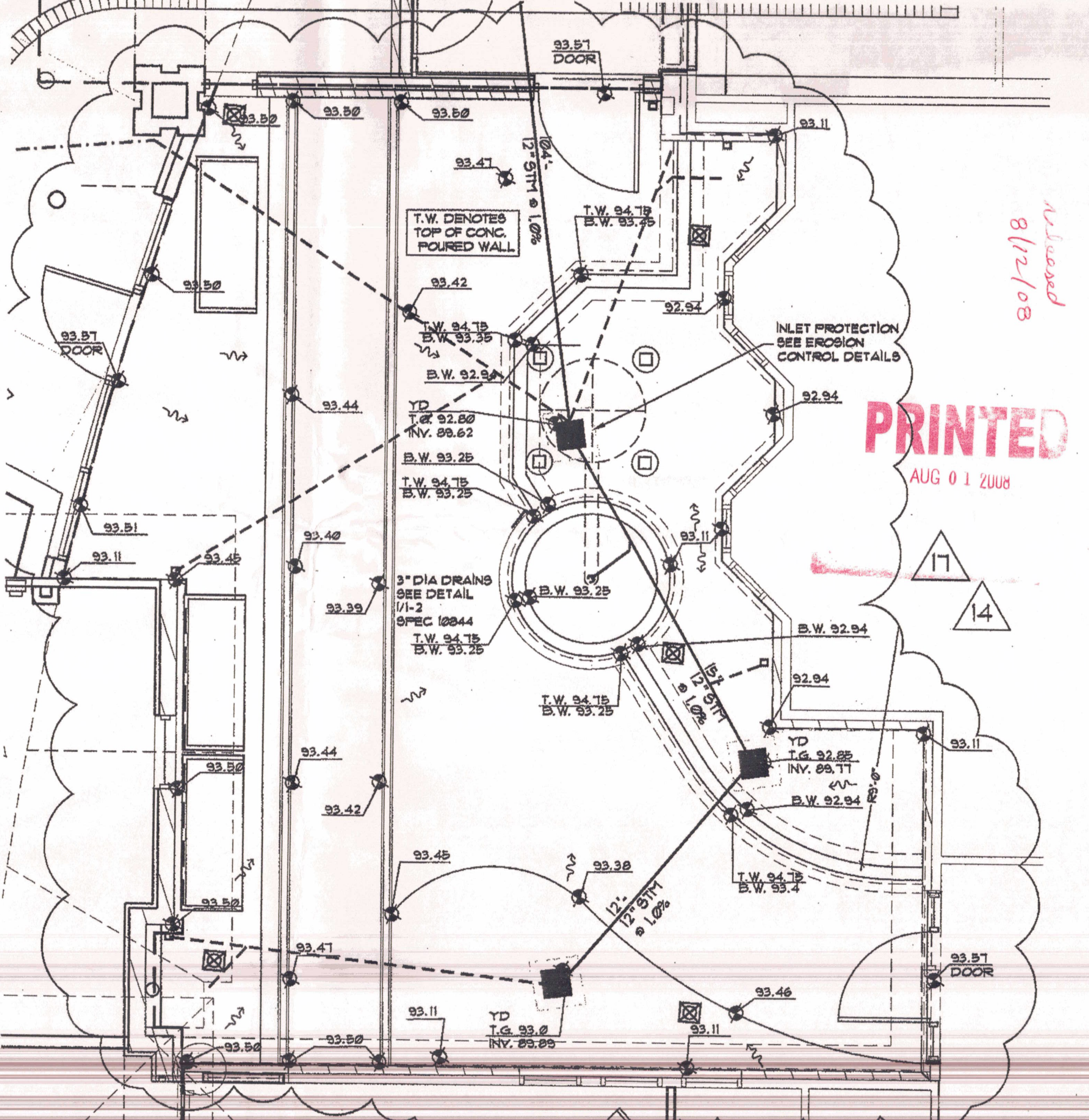
GENERAL NOTES

- CONTRACTOR SHALL VERIFY DIMENSIONS PRIOR TO BEGINNING OF WORK AND NOTIFY THE ARCHITECT FOR RESOLUTION OF ANY DISCREPANCIES.
 - CONTRACTORS ARE REQUIRED TO INSPECT THE SITE PRIOR TO BIDDING TO ASCERTAIN ALL ITEMS IN EVIDENCE THAT MUST BE ADDRESSED IN COMPLETION OF THE WORK AND INCLUDE THE COST OF THE REQUIRED WORK IN THEIR BID.
 - ALL UTILITIES AND APPURTEANCES SHALL BE CONSTRUCTED ACCORDING TO THE LOCAL CITY OF WEBSTER AND BUTLER COUNTY REQUIREMENTS.
 - ROOF DRAINS AND OTHER CLEAN WATER CONNECTIONS TO SANITARY SEWER ARE PROHIBITED.
 - ALL EXISTING UNDERGROUND UTILITIES ARE SHOWN IN THEIR APPROXIMATE LOCATIONS ACCORDING TO THE BEST AVAILABLE INFORMATION. THE CONTRACTOR SHALL NOTIFY THE OHIO UTILITY PROTECTION SERVICE (1-800-942-2164) 48 HOURS PRIOR TO CONSTRUCTION TO OBTAIN ACCURATE FIELD LOCATIONS OF UNDERGROUND UTILITIES.
 - ALL UTILITIES SHOWN ARE TO REMAIN UNLESS NOTED OTHERWISE.
 - CONTRACTOR IS RESPONSIBLE FOR VERIFYING ALL EXISTING UTILITY DEPTHS, INVERTS, LOCATIONS ETC. PRIOR TO CONSTRUCTION. HE SHALL NOTIFY THE ARCHITECT IMMEDIATELY, IF THERE ARE ANY DISCREPANCIES.
 - ADD 800 TO ALL PROPOSED CONTOURS AND SPOT ELEVATIONS.
 - ALL FILL TO BE USED ON ANOTHER SITE SHALL BE CLEAN FILL ONLY. ALL DEBRIS INCLUDING BUT NOT LIMITED TO (CONC, ASPHALT, GRAVEL ETC.) SHALL BE DISPOSED OF IN ACCORDANCE WITH LOCAL REGULATIONS AND REQUIREMENTS.
 - SEE ELECTRICAL PLANS FOR SITE LIGHTING FIXTURE SCHEDULE.
 - GROUND MOUNTED BUILDING UPLIGHT FIXTURE, PLANTING BED LOCATION TYP. SEE 14-1
 - COURTYARD STEM FIXTURE AT PLANT BED, PROVIDE UNDERGROUND CONDUIT. SEE ELEC DWGS. AND LANDSCAPE SHEETS
 - COACH LIGHT FIXTURE. SEE ELEC DWGS.
 - RELOCATED EXISTING SITE PARKING LIGHTS. COORDINATE CIRCUITING W/ELEC. DWGS. MATCH EXISTING H.P. SODIUM LAMPS. SEE 14-5.
 - WATER FEATURE LIGHT, MODEL #F107. SEE ELEC AND P.L.G. DWGS. SEE SHEET 14-2 FOR DETAILS.
- K. CONTRACTOR SHALL PROVIDE EROSION CONTROL MEASURES TO COMPLY LOCAL CODE REQUIREMENTS AND SHEET 1-4.

SYMBOLS

SITE PLAN	UTILITIES
DIRECTION OF FLOW	CATCH BASIN
PROPERTY LINE	STM MANHOLE
EXISTING CONTOUR	SAN MANHOLE
NEW CONTOUR	STM
SPOT ELEVATION	SAN
EXISTING SPOT ELEVATION	SANS
ASPHALT PAVEMENT	GAS
CONC SIDEWALK	WATER
	ELEC
	TEL/CAB

2 WORKING DAYS
BEFORE YOU DIG
CALL TOLL FREE 800-362-2764
OHIO UTILITIES PROTECTION SERVICE



COURTYARD GRADING / STORM WATER
SCALE: 1/4"=1'-0"

STATE OF OHIO
Professional Engineer
No. 25106
Date: 8/1/2008
8/1/08
For Stm. As Built
Purposes only

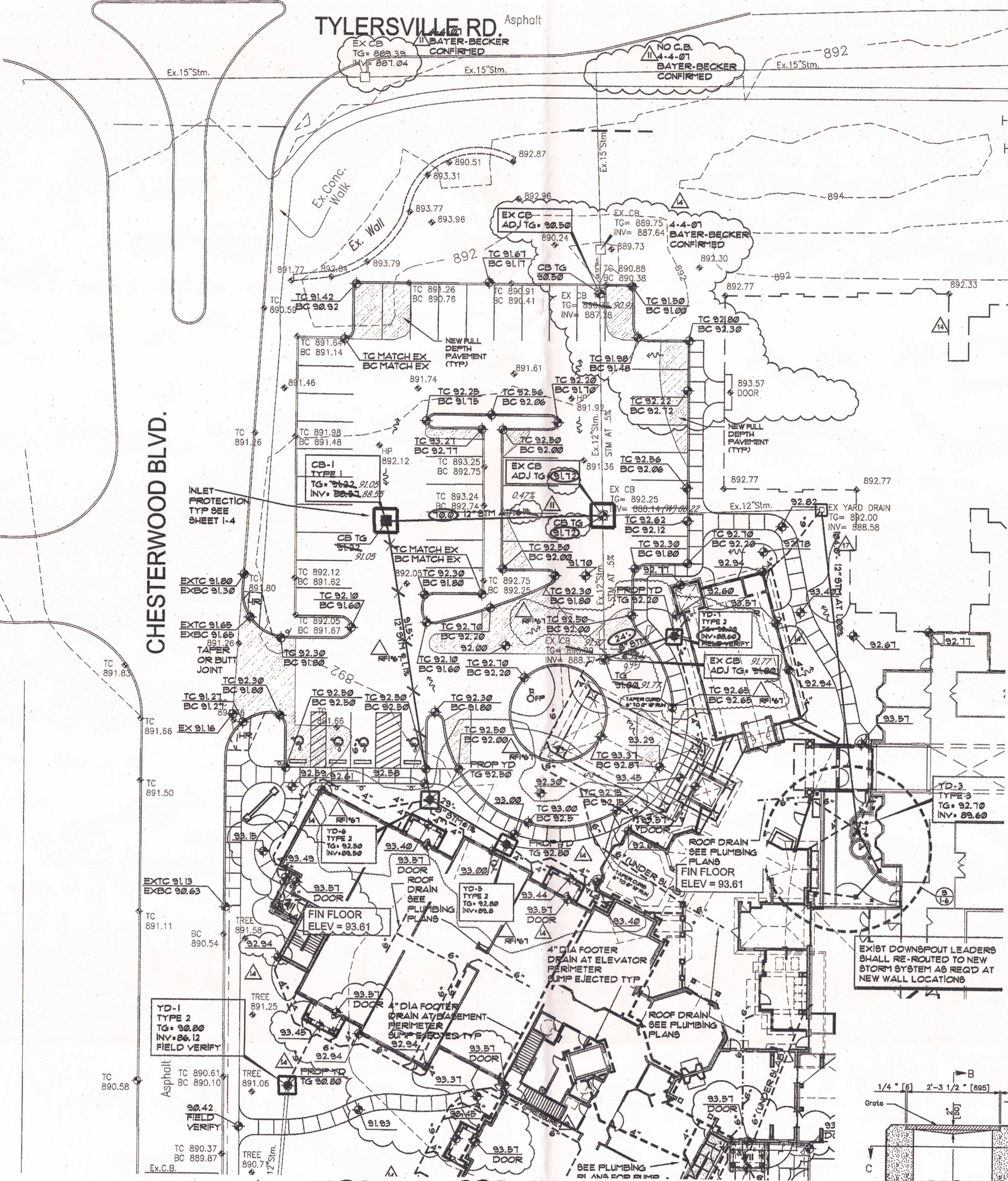
PRINTED
AUG 01 2008

© COPYRIGHT 2005 JAM ARCHITECTS, INC.

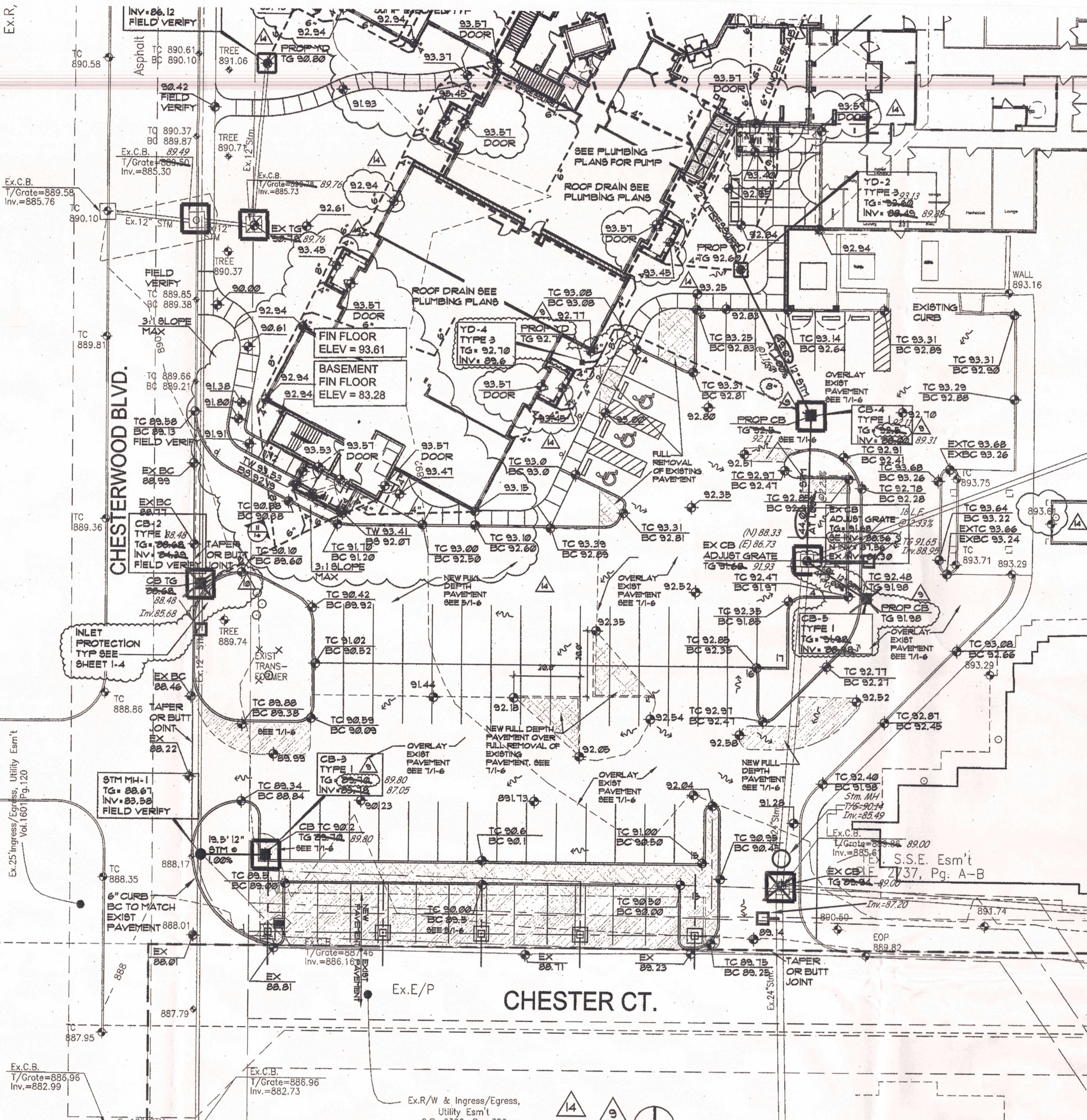
NORTH/SOUTH GRADING/STORM
COURTYARD GRADING/STORM PLANS
CHESTERWOOD VILLAGE - PHASE 2
HILLDALE COMMUNITIES
WEST CHESTER, OHIO

DATE: 1-23-07
RECORD: STG
DRAWN BY: JLC
CHECKED BY: JLC

1-3



GRADING / STORM WATER
SCALE: 1" = 20' NORTH PARKING, MAIN STREET WING A



GRADING / STORM WATER
SCALE: 1" = 20' SOUTH PARKING WING B

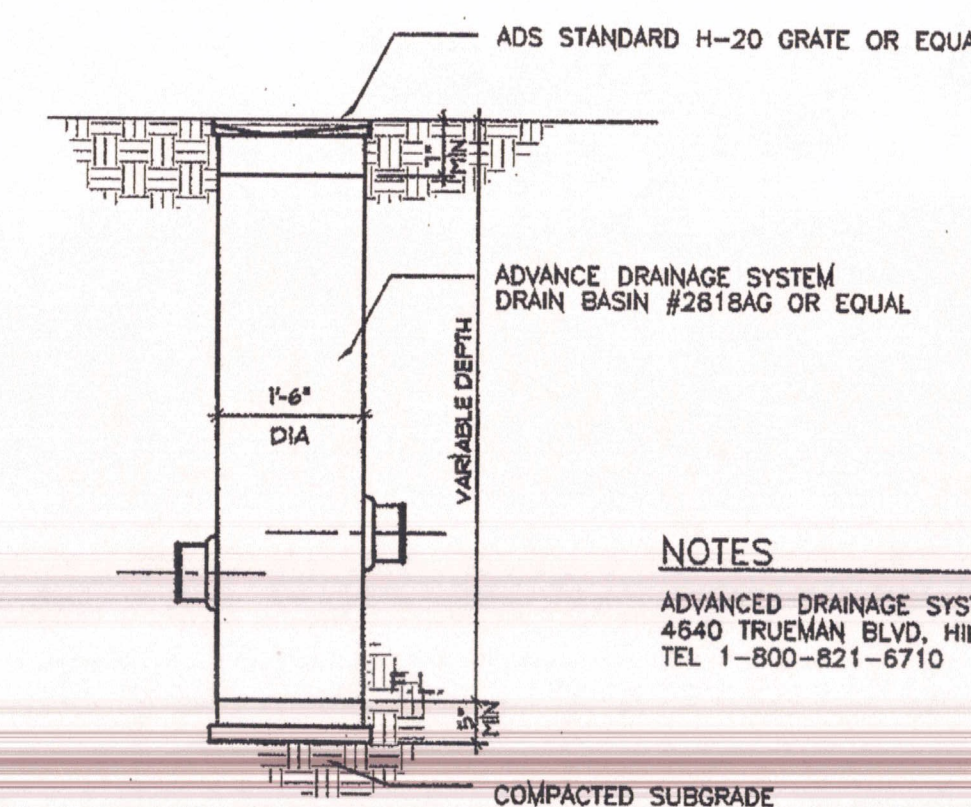
GENERAL NOTES

- A. CONTRACTOR SHALL VERIFY DIMENSIONS PRIOR TO BEGINNING OF WORK AND NOTIFY THE ARCHITECT FOR RESOLUTION OF ANY DISCREPANCIES.
- B. CONTRACTORS ARE REQUIRED TO INSPECT THE SITE PRIOR TO BIDDING TO ASCERTAIN ALL ITEMS IN EVIDENCE THAT MUST BE ADDRESSED IN COMPLETION OF THE WORK AND INCLUDE THE COST OF THE REQUIRED WORK IN THEIR BID.
- C. ALL UTILITIES AND APPURTANCES SHALL BE CONSTRUCTED ACCORDING TO THE LOCAL CITY OF WEBSTER AND BUTLER COUNTY REQUIREMENTS.
- D. ROOF DRAINS AND OTHER CLEAN WATER CONNECTIONS TO SANITARY SEWER ARE PROHIBITED.
- E. ALL EXISTING UNDERGROUND UTILITIES ARE SHOWN IN THEIR APPROXIMATE LOCATIONS ACCORDING TO THE BEST AVAILABLE INFORMATION. THE CONTRACTOR SHALL NOTIFY THE OHIO UTILITY PROTECTION SERVICE (1-800-362-2164) 48 HOURS PRIOR TO CONSTRUCTION TO OBTAIN ACCURATE FIELD LOCATIONS OF UNDERGROUND UTILITIES.
- F. ALL UTILITIES SHOWN ARE TO REMAIN UNLESS NOTED OTHERWISE.
- G. CONTRACTOR IS RESPONSIBLE FOR VERIFYING ALL EXISTING UTILITY DEPTHS, INVERTS, LOCATIONS ETC. PRIOR TO CONSTRUCTION. HE SHALL NOTIFY THE ARCHITECT IMMEDIATELY, IF THERE ARE ANY DISCREPANCIES.
- H. ADD 800 TO ALL PROPOSED CONTOURS AND SPOT ELEVATIONS.
- I. ALL FILL TO BE USED ON ANOTHER SITE SHALL BE CLEAN FILL ONLY. ALL DEBRIS INCLUDING BUT NOT LIMITED TO CONG. ASPHALT, GRAVEL ETC. SHALL BE DISPOSED OF IN ACCORDANCE WITH LOCAL REGULATIONS AND REQUIREMENTS.
- J. SEE ELECTRICAL PLANS FOR SITE LIGHTING FIXTURE SCHEDULE.
L-1: GROUND MOUNTED BUILDING UPLIGHT FIXTURE, PLANTING BED LOCATION TYP.
L-1-1: ILLUMINATION
L-2: COURTYARD SITE FIXTURE AT PLANT BED, PROVIDE UNDERGROUND CONDUIT, SEE ELEC DWGS. AND LANDSCAPE SHEETS
L-3: COACH LIGHT FIXTURE, SEE ELEC DWGS.
L-4: RELOCATED EXISTING SITE PARKING LIGHTS, COORDINATE EXISTING W/ ELEC. DWGS. MATCH EXISTING H.P. SODIUM LAMPS, SEE 4/1-5.
L-5: WATER FEATURE LIGHT, MODEL #101, SEE ELEC AND PLG DWGS. SEE SHEET 11-2 FOR DETAILS.
- K. CONTRACTOR SHALL PROVIDE EROSION CONTROL MEASURES TO COMPLY LOCAL CODE REQUIREMENTS AND SHEET 1-4.

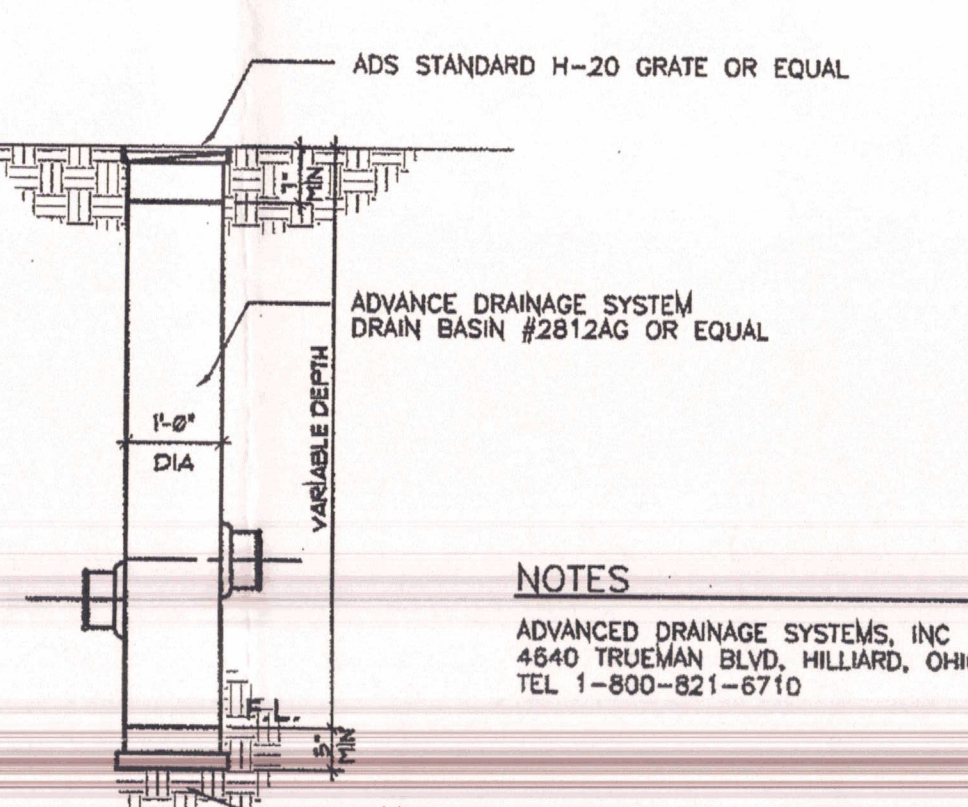
SYMBOLS

SITE PLAN		UTILITIES	
--->	DIRECTION OF FLOW	■	CATCH BASIN
---	PROPERTY LINE	●	STM MANHOLE
---	EXISTING CONTOUR	○	SAN MANHOLE
---	NEW CONTOUR	---	STM SANITARY SEWER
---	SPOT ELEVATION	---	SAN SANITARY SEWER
---	EXISTING SPOT ELEVATION	---	GAS GAS LINE
---	ASPHALT PAVEMENT	---	WATER WATER LINE
---	CONG SIDEWALK	---	ELEC ELECTRIC LINE
		---	TEL/CAB TELEPHONE LINE

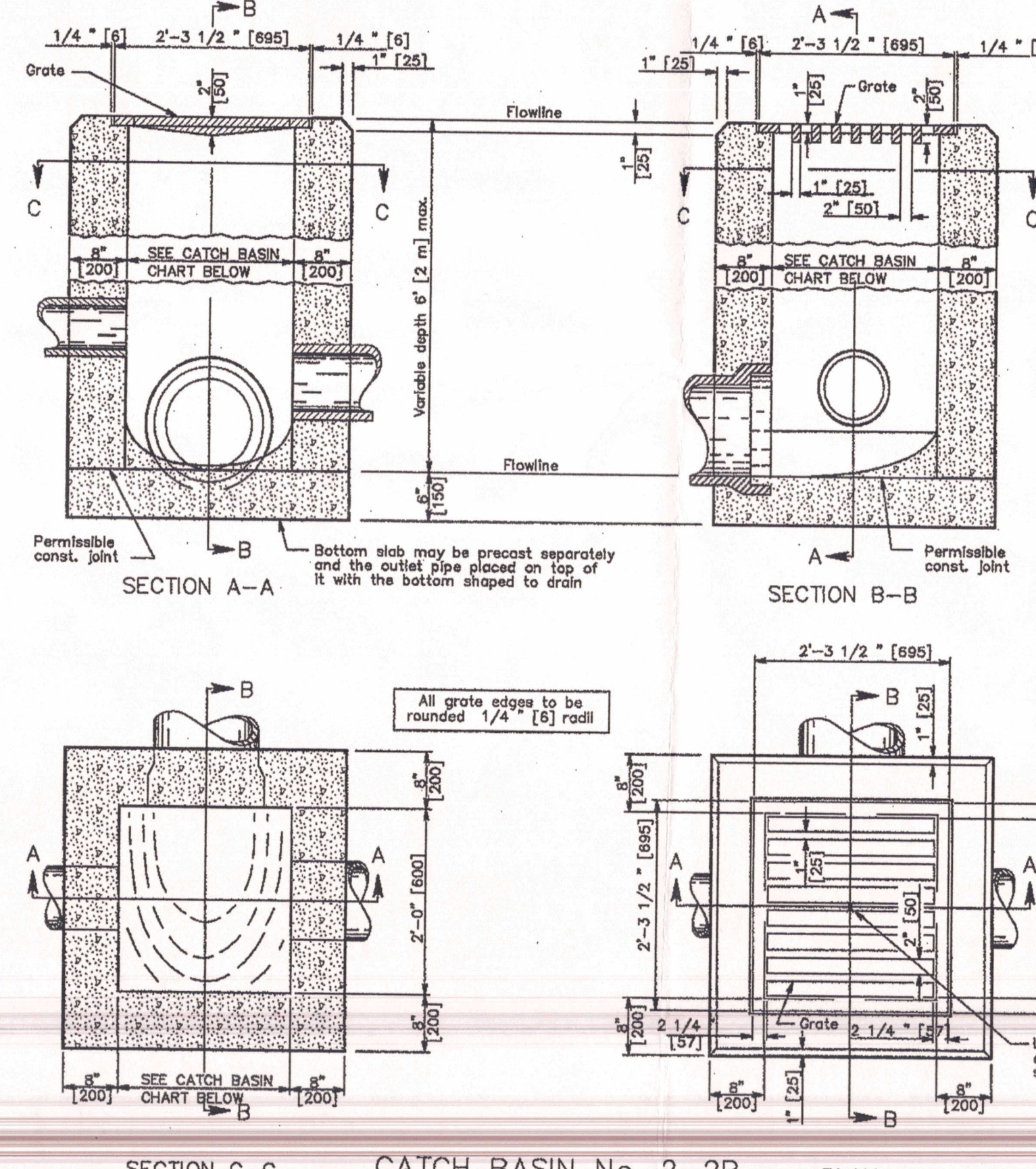
2 WORKING DAYS
BEFORE YOU DIG
CALL TOLL FREE 800-362-2164
OHIO UTILITIES PROTECTION SERVICE



NOTES
ADVANCED DRAINAGE SYSTEMS, INC.
4540 TRUJMAN BLVD., HILLIARD, OHIO 43026
TEL 1-800-821-6710



NOTES
ADVANCED DRAINAGE SYSTEMS, INC.
4540 TRUJMAN BLVD., HILLIARD, OHIO 43026
TEL 1-800-821-6710



CATCH BASIN TYPE 1
SCALE: 1" = 30"

NOTES

GRATE: The design shall be essentially the same and equally as strong as the one shown (see construction information table), or meet the requirements of CMS 711.14. Grate openings and dimensions shall not differ from those shown unless otherwise shown in the plans.

If necessary, blocks and grates shall be spaced 1/4" (6.35 mm) apart. Blocks and grates shall be marked No. 4489-C or East Jordan No. 5110 Type M3 or approved equal.

As of January 1, 2003, the following text shall be cast into the top of the grate:

"DRAIN NO WASTE" and "DRAINS TO WATERWAY"

Text shall be printed in bold, capital letters with a minimum height of 1/2" (12.7 mm). "WATERWAY" may be substituted with "STREAM", "RIVER", "LAKE", etc. Actual placement and logo may vary per manufacturer.

WALLS: Brick or cast-in-place walls have a nominal thickness of 8" (203 mm). Precast walls shall have a minimum thickness of 6" (152 mm) and be reinforced sufficiently to permit shipping and handling without damage.

CONCRETE: Cast-in-place concrete is to be Class C. All precast concrete shall meet the requirements of CMS 706.13 and be marked with the catch basin number.

PRECAST BASE: If a precast base is used, it shall be set deep enough so that the top can be placed on the base to provide the grate elevation specified in the plans. Layers of brick shall not be used to adjust the top elevation.

LOCATION AND ELEVATION: When given on the plans, location and elevation are at the top center of the grate. When side openings are provided, the elevation shall be at the flow line of the side inlet.

MINIMUM DEPTH: The minimum depth for CB No. 2-2B shall be the D.O. of the outlet pipe plus 4" (102 mm).

2-2B GRATE ELEVATION: Grate elevation is to be placed 4" to 100" (102 mm to 2540 mm) below normal finished ground. The inlet shall be placed 10" to 100" (254 mm to 2540 mm) below normal finished ground. The inlet shall be placed 10" to 100" (254 mm to 2540 mm) below normal finished ground.

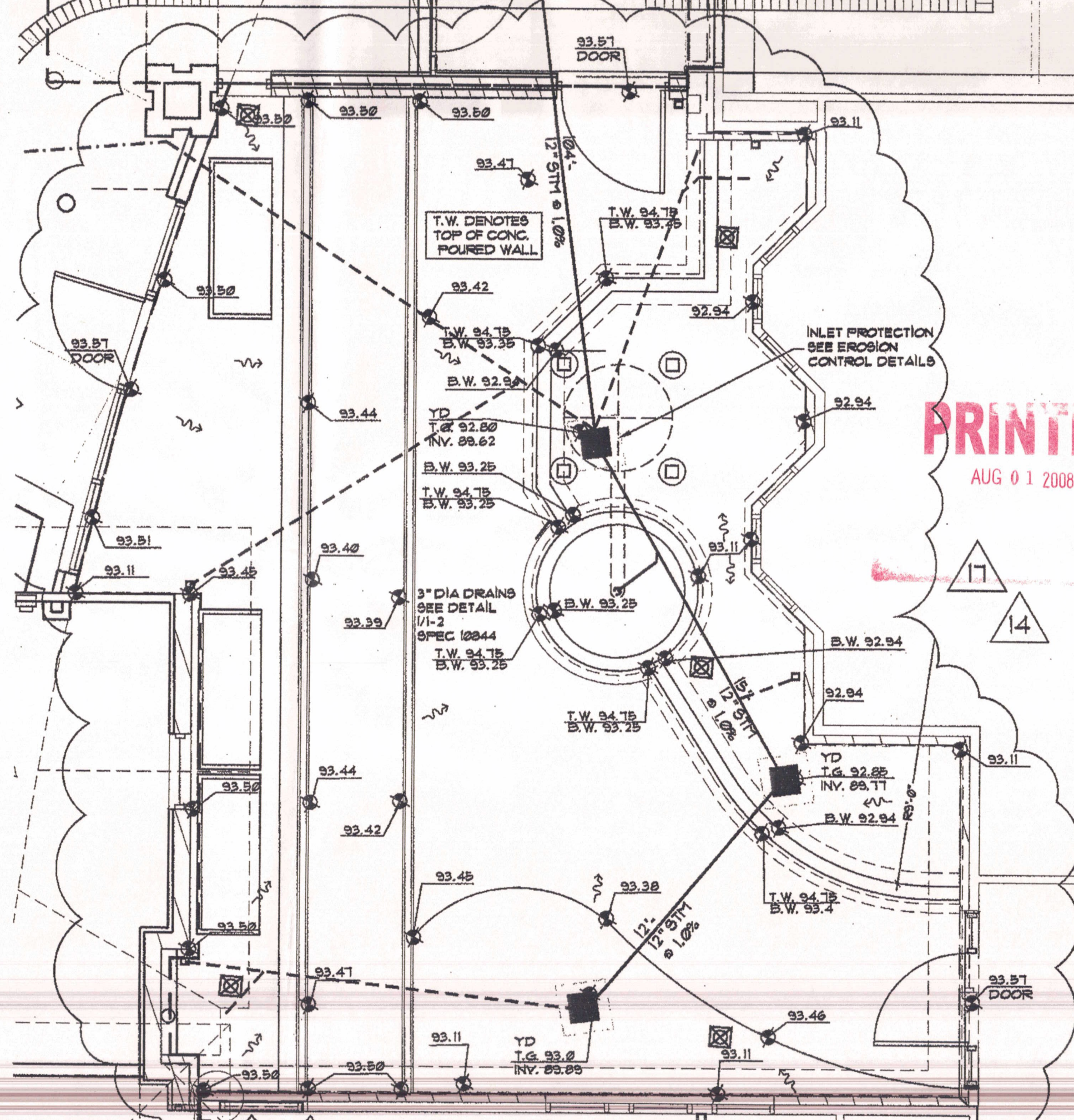
OPENINGS: Pipe openings shall be the D.O. of the pipe being supplied plus 2" (51 mm) when fabricated with gasket per CMS 801.

PAYMENT: All materials and labor, including excavation and backfilling, shall be paid for under Item 604 - Catch Basin, No. 2-2B.

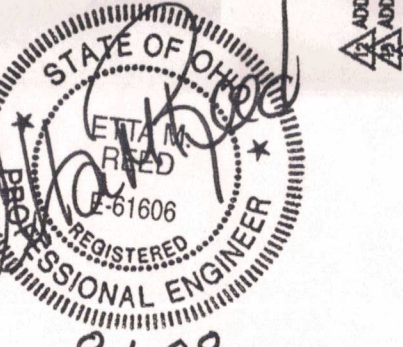
CONSTRUCTION INFORMATION
Minimum weight (mass) of grate, 130 lbs. (54 kg)

CATCH BASIN CHART

INTERIOR	OUTLET
2'-0"	12" to 21"
2'-0"	12" to 21"



COURTYARD GRADING / STORM WATER
SCALE: 1/4" = 1'-0"



8-1-08
For Stm. As Built
Purpose only

PRINTED
AUG 01 2008

© COPYRIGHT 2008 JAM ARCHITECTS, INC.

DATE	CHECKED	STG
1-23-07		

JOB #	DRAWN BY	JLC
0413B	JLC	

NORTH / SOUTH GRADING / STORM PLANS
COURTYARD GRADING / STORM PLANS
CHESTERWOOD VILLAGE - PHASE 2
HILLIARD COMMUNITIES
WEST CHESTER, OHIO

JAM ARCHITECTS, INC.
4540 TRUJMAN BLVD., HILLIARD, OHIO 43026
TEL 1-800-821-6710