

TYLERSVILLE RD.

CHESTERWOOD BLVD.

CHESTERWOOD BLVD.

CHESTER CT.

GENERAL NOTES

- A. CONTRACTOR SHALL VERIFY DIMENSIONS PRIOR TO BEGINNING OF WORK AND NOTIFY THE ARCHITECT FOR RESOLUTION OF ANY DISCREPANCIES.
- B. CONTRACTORS ARE REQUIRED TO INSPECT THE SITE PRIOR TO BIDDING TO ASCERTAIN ALL TIERS IN EVIDENCE THAT MUST BE ADDRESSED IN COMPLETION OF THE WORK AND INCLUDE THE COST OF THE REQUIRED WORK IN THEIR BID.
- C. ALL UTILITIES AND AFFIDAVITS SHALL BE CONSTRUCTED ACCORDING TO THE LOCAL CITY OF WESHESTER AND BUTLER COUNTY REQUIREMENTS.
- D. ROOF DRAINS AND OTHER CLEAN WATER CONNECTIONS TO SANITARY SEWER ARE PROHIBITED.
- E. ALL EXISTING UNDERGROUND UTILITIES ARE SHOWN IN THEIR APPROXIMATE LOCATIONS ACCORDING TO THE BEST AVAILABLE INFORMATION. THE CONTRACTOR SHALL NOTIFY THE OHIO UTILITY PROTECTION SERVICE (1-800-362-2764) 48 HOURS PRIOR TO CONSTRUCTION TO OBTAIN ACCURATE FIELD LOCATIONS OF UNDERGROUND UTILITIES.
- F. ALL UTILITIES SHOWN ARE TO REMAIN UNLESS NOTED OTHERWISE.
- G. CONTRACTOR IS RESPONSIBLE FOR VERIFYING ALL EXISTING UTILITY DEPTHS, INVERTS, LOCATIONS ETC. PRIOR TO CONSTRUCTION. HE SHALL NOTIFY THE ARCHITECT IMMEDIATELY, IF THERE ARE ANY DISCREPANCIES.
- H. ADD TO ALL PROPOSED CONTOURS AND SPOT ELEVATIONS.
- I. ALL FILL TO BE USED ON ANOTHER SITE SHALL BE CLEAN FILL ONLY. ALL DEBRIS INCLUDING BUT NOT LIMITED TO CONG. ASPHALT GRAVEL ETC) SHALL BE DISPOSED OF IN ACCORDANCE WITH LOCAL REGULATIONS AND REQUIREMENTS.
- J. SEE ELECTRICAL PLANS FOR SITE LIGHTING FIXTURE SCHEDULE.
 L-1: GROUND MOUNTED BUILDING UPLIGHT FIXTURE, PLANTING BED LOCATION TYP. SEE IA-1
 L-2: COUNTRY SIDE FIXTURE AT PLANT BED, PROVIDE UNDERGROUND CONDUIT. SEE ELEC DWGS. AND LANDSCAPE SHEETS
 L-3: COACH LIGHT FIXTURE. SEE ELEC DWGS.
 L-4: RELOCATED EXISTING SITE PARKING LIGHTS.
 L-5: FOUNTAIN AND LIGHT, MODEL 9000000. SEE ELEC AND PLG DWGS. SEE SHEET 11-2 FOR DETAILS.
- K. CONTRACTOR SHALL PROVIDE EROSION CONTROL MEASURES TO COMPLY LOCAL CODE REQUIREMENTS AND SHEET 1-4.

SYMBOLS

SITE PLAN		UTILITIES	
	DIRECTION OF FLOW		CATCH BASIN
	PROPERTY LINE		STM MANHOLE
	EXISTING CONTOUR		STM - STORM SEWER
	NEW CONTOUR		SAN - SANITARY SEWER
	SPOT ELEVATION		GAS - GAS LINE
	EXISTING SPOT ELEVATION		WATER - WATER LINE
	ASPHALT PAVEMENT		ELEC - ELECTRIC LINE
	CONC SIDEWALK		TEL/CAB - TELEPHONE CABLE LINE

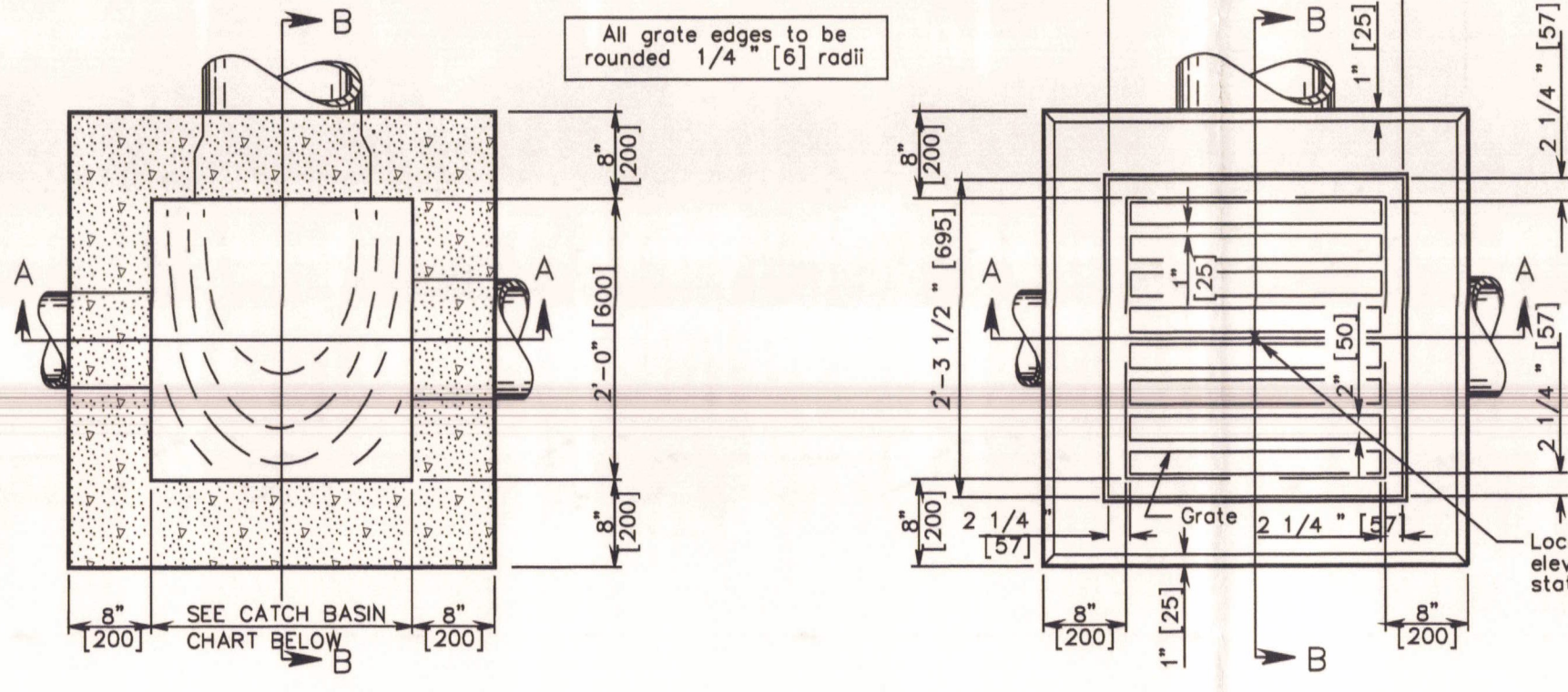
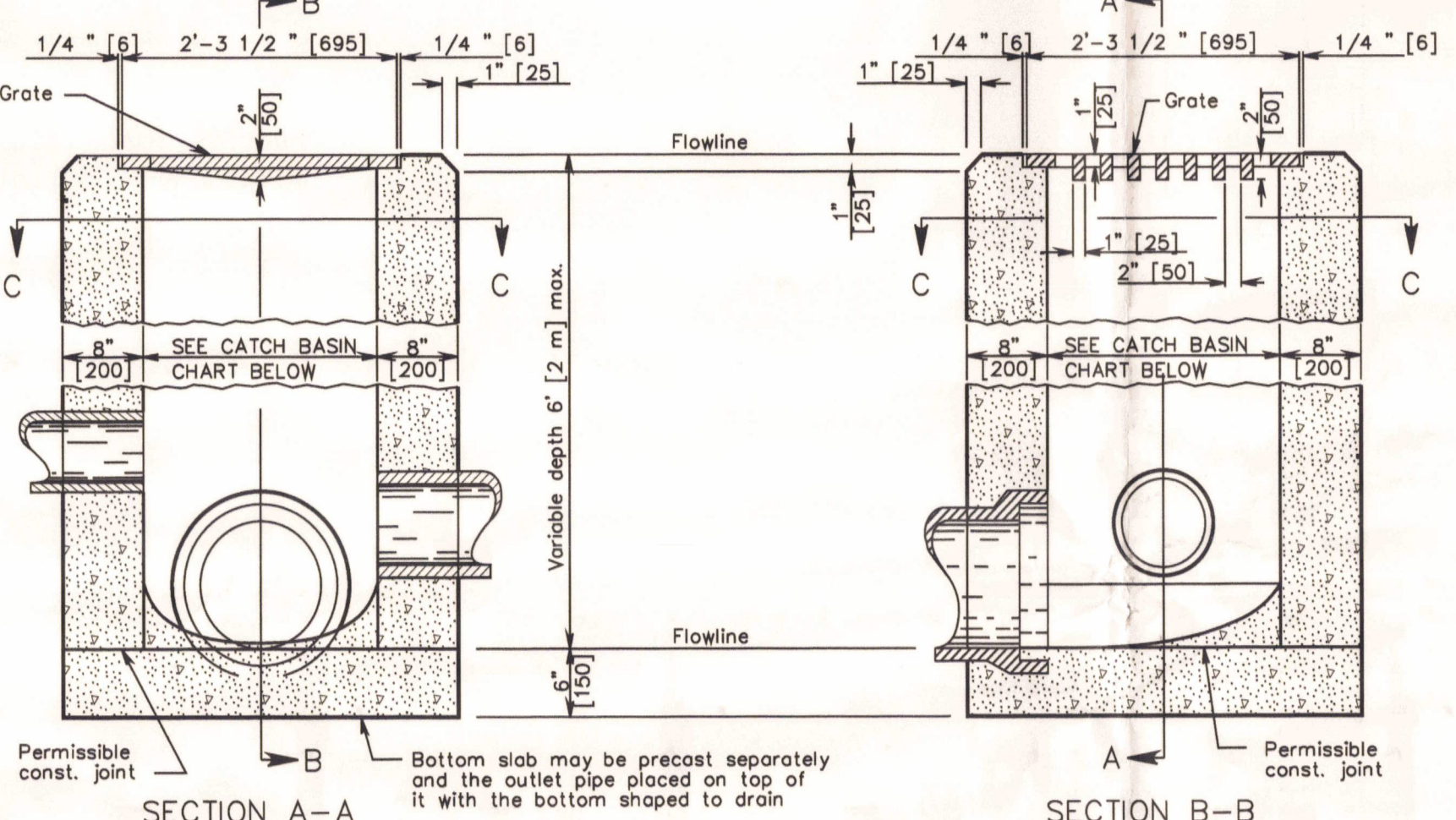
BEFORE YOU DIG!
 CALL TOLL FREE 800-362-2764
 OHIO UTILITIES PROTECTION SERVICE

GRADING/ STORM WATER
 SCALE: 1"=20' SOUTH PARKING 4 WING B

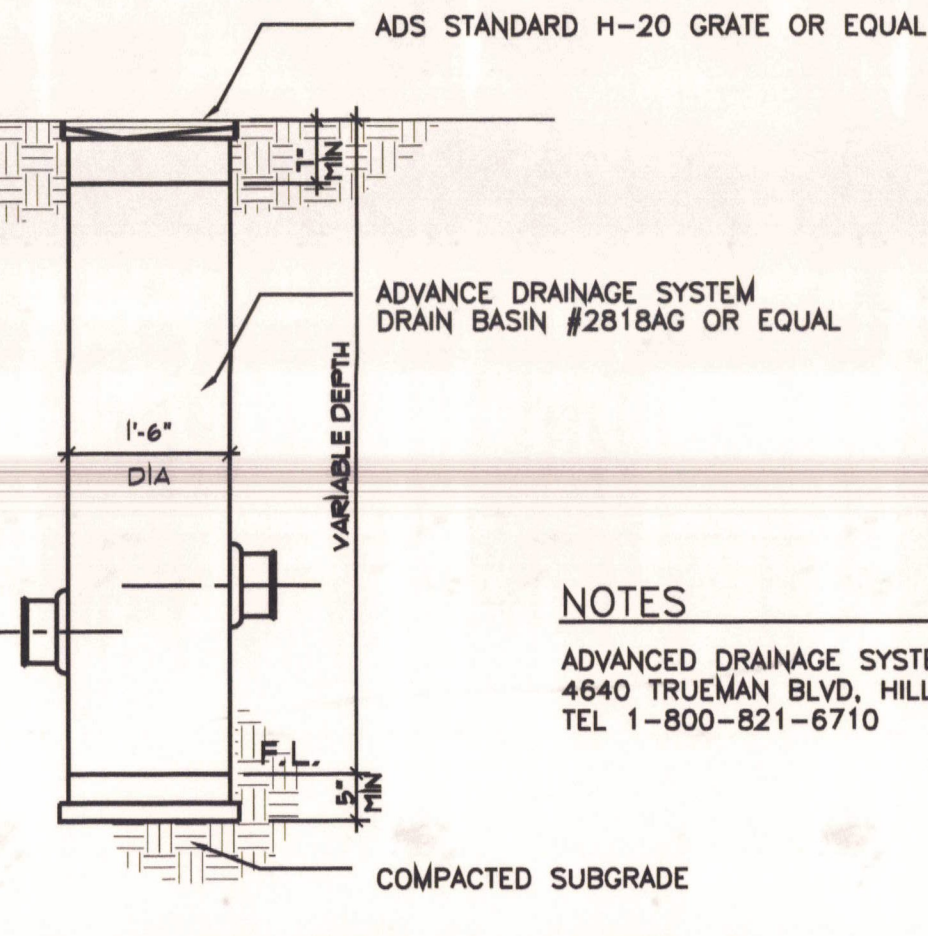
GRADING/ STORM WATER
 SCALE: 1"=20' NORTH PARKING, MAIN STREET 4 WING A

NOTES

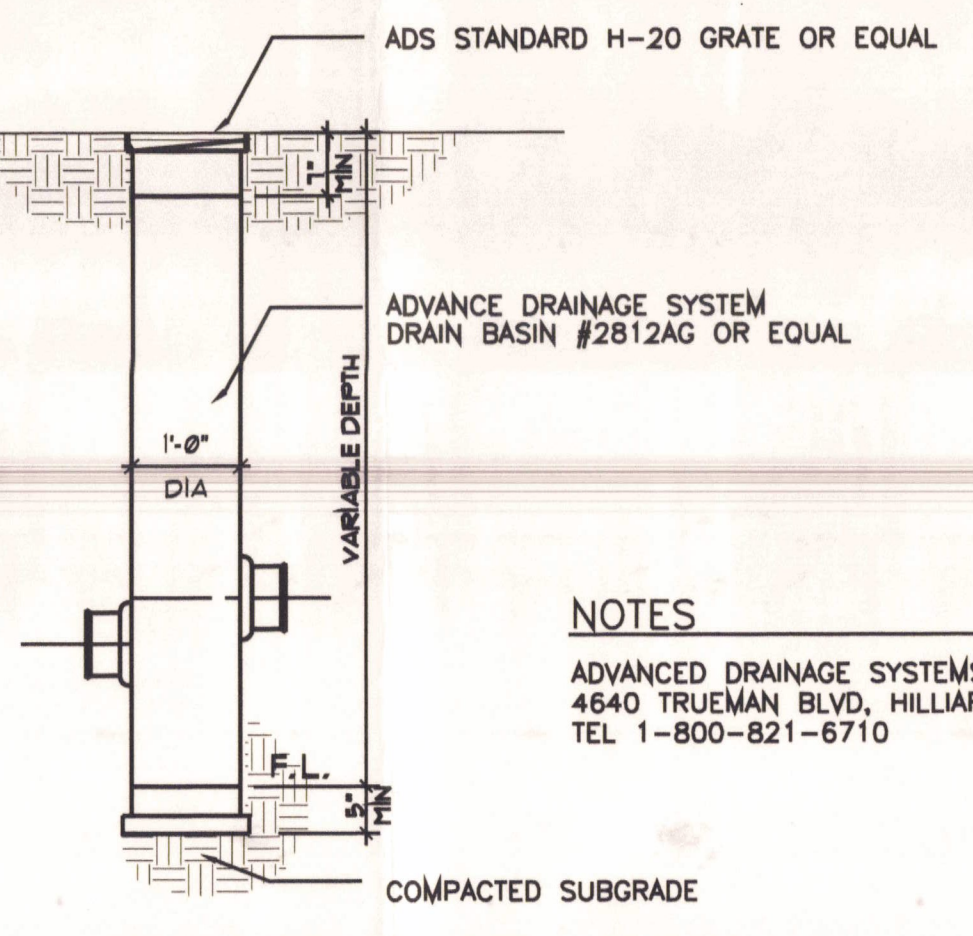
GRATE: The design shall be essentially the same and equally as strong as the one shown (see construction information table). Grate openings and dimensions shall not differ from those shown unless otherwise shown in the plans.
 If necessary, bicycle safe grates shall be specified in the plans. Bicycle safe grates shall be Nyecon No. 44-802-C or East Jordan No. 5110 Type M3 or approved equals.
 As of January 1, 2003, the following text shall be cast into the top of the grate:
 "DUMP NO WASTE" and "DRAINS TO WATERWAY"
 Text shall be printed in bold, capital letters with a minimum height of 1/2" WATERWAY may be substituted with "STREAM," "RIVER," "LAKE," etc. Actual placement and logo may vary per manufacturer.
 WALLS: Brick or cast-in-place walls have a nominal thickness of 8" (200). Precast walls shall have a minimum thickness of 6" (150) and be reinforced sufficiently to permit shipping and handling without damage.
 CONCRETE: Cast-in-place concrete is to be Class C. All precast concrete shall meet the requirements of AWS 706.13 and be marked with the catch basin number.
 PRECAST BASE: If a precast base is used, it shall be set deep enough so that the top can be placed on the base to provide the grate elevation specified in the plans. Layers of brick shall not be used to adjust the top elevation.
 LOCATION AND ELEVATION: When given on the plans, location and elevation are at the top center of the grate. When side openings are provided, the elevation shall be at the flow line of the side inlet.
 MINIMUM DEPTH: The minimum depth for CB No. 2-2B shall be the O.D. of the outlet pipe plus 4" (100).
 2-2B GRATE ELEVATION: Grate elevation is to be placed 4" to 6" (100 to 150) above normal finish, returning to normal 10' to 15' (3 m to 5 m) each side of inlet.
 OPENINGS: Pipe openings shall be the O.D. of the pipe being supported plus 2" (50) when fabricated or field cut. The annular space shall be filled with grout per AWS 601.
 PAYMENT: All materials and labor, including excavation and backfilling, shall be paid for under Item 604 - Catch Basin, No. 2-2B.
 CONSTRUCTION INFORMATION
 Minimum weight (mass) of grate, 120 lbs (54 kg)



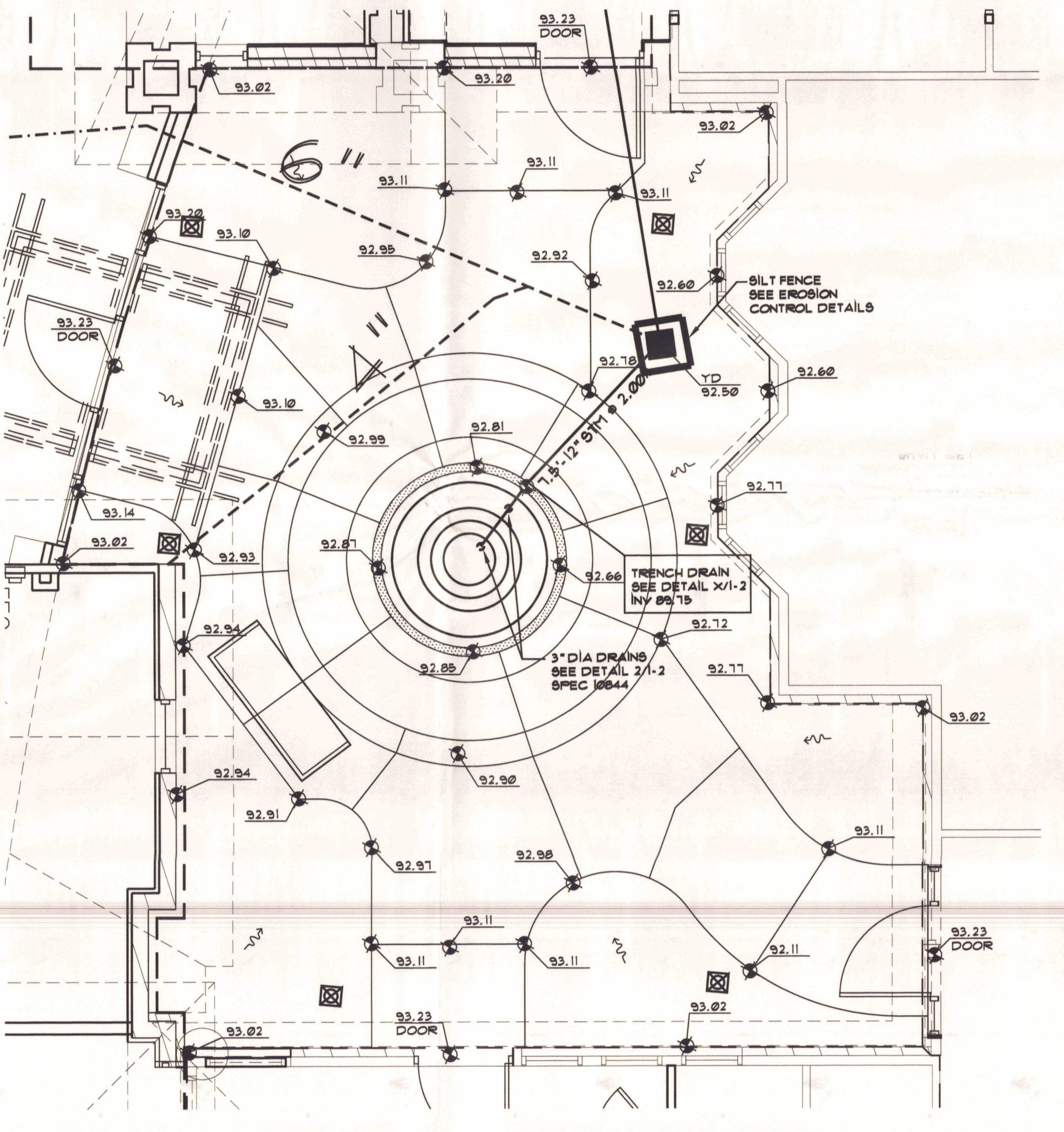
SECTION C-C CATCH BASIN No. 2-2B PLAN
 SCALE: 1"=30'-0"



YARD DRAIN TYPE 2
 SCALE: 1"=30'-0"



YARD DRAIN TYPE 3
 SCALE: 1"=30'-0"



COURTYARD GRADING/STORM WATER
 SCALE: 1/4"=1'-0"



© COPYRIGHT 2000 JAM ARCHITECTS, INC.

DATE	1-25-07	CHECKED	STC
JOB #	0413B	DRAWN BY	JLC

NORTH/SOUTH GRADING/STORM COURTYARD GRADING/STORM PLANS
 CHESTERWOOD VILLAGE - PHASE 2
 HILLDALE COMMUNITIES
 WEST CHESTER, OHIO

