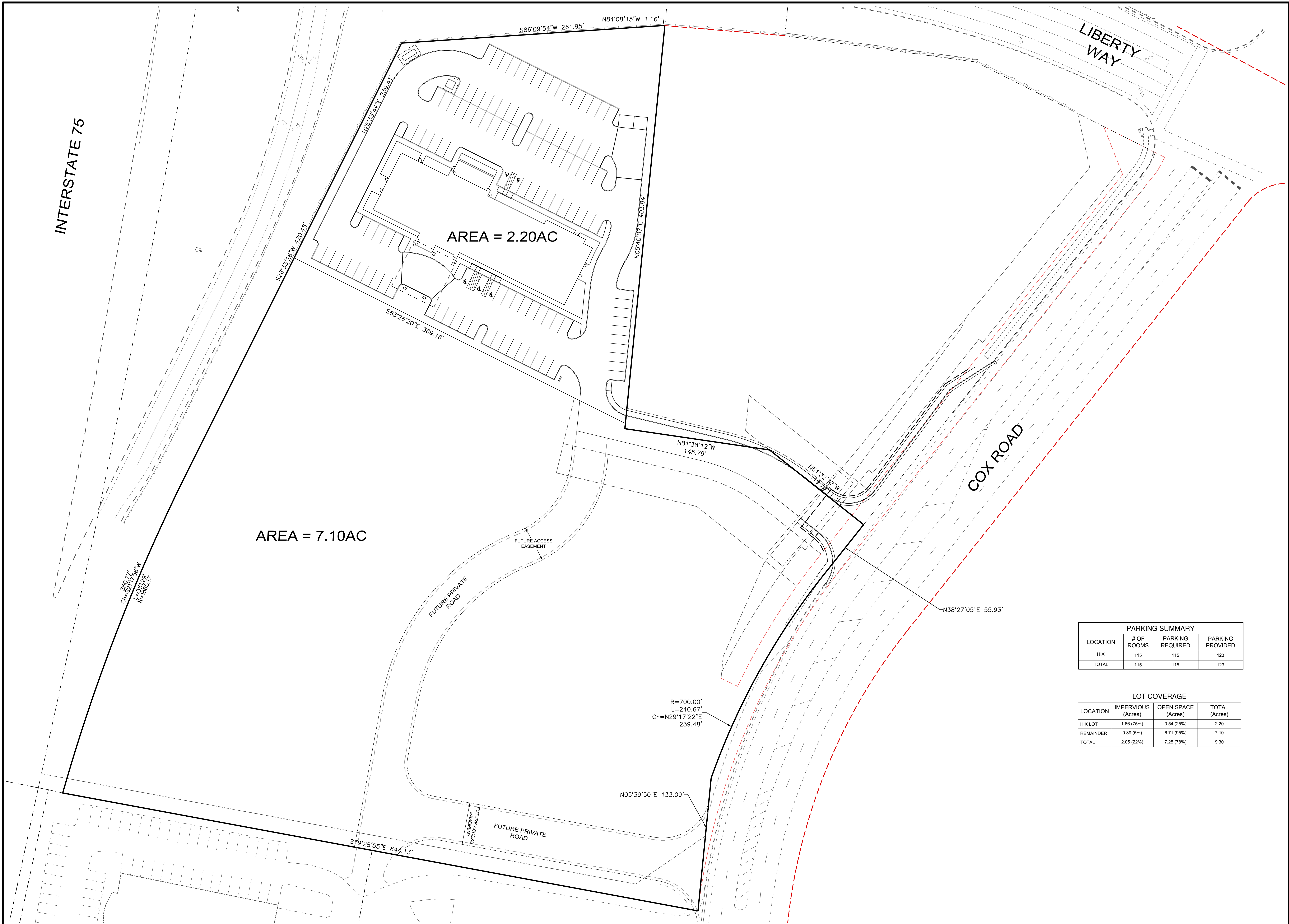
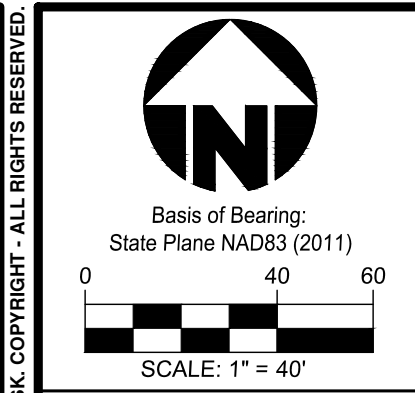


Plot time: Sep 21, 2016 - 3:16pm
 Drawing name: J:\2015\15M040-000\CD\DWG\15M040-000 CD HIX.dwg - Layout.Tab: C3-0 Overall



PARKING SUMMARY			
LOCATION	# OF ROOMS	PARKING REQUIRED	PARKING PROVIDED
HIX	115	115	123
TOTAL	115	115	123

LOT COVERAGE			
LOCATION	IMPERVIOUS (Acres)	OPEN SPACE (Acres)	TOTAL (Acres)
HIX LOT	1.66 (75%)	0.54 (25%)	2.20
REMAINDER	0.39 (5%)	6.71 (95%)	7.10
TOTAL	2.05 (22%)	7.25 (78%)	9.30



Item	Date	Drawn	Checked	Revision Description
1	08-13-16	MJL		PRELIMINARY DEVELOPMENT PLAN SUBMITTAL
2	08-21-16	MJL		TEMPORARY ROAD REMOVAL
3				
4				
5				
6				
7				
8				
9				

THE FIELDS AT LIBERTY WAY
HOLIDAY INN EXPRESS
 COX ROAD & LIBERTY WAY
 WEST CHESTER TOWNSHIP
 BUTLER COUNTY, OH
 SECTION 12, 16, TOWN 3, RANGE 2

bayer becker
 www.bayerbecker.com
 6900 Myersville Road, Suite A
 Mason, OH 45040 - 513.336.6600

Drawing: 15M040-000 CD HIX
 Drawn by: MJL
 Checked by:
 Issue Date: 09-13-16

Sheet: **C3.0**

THIS DOCUMENT AND ALL RELATED DETAIL DRAWINGS, SPECIFICATIONS, AND ELECTRONIC MEDIA PREPARED OR FURNISHED BY BAYER BECKER (BB), ARE INSTRUMENTS OF BB'S PROFESSIONAL SERVICE AND IS THE EXCLUSIVE PROPERTY OF BB. NO DISCLOSURE, USE, REPRODUCTION OR DUPLICATION IN WHOLE OR IN PART MAY BE MADE WITHOUT WRITTEN PERMISSION OF BB, AND IS DONE SO AT USER'S SOLE RISK. COPYRIGHT - ALL RIGHTS RESERVED.