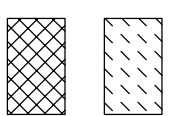
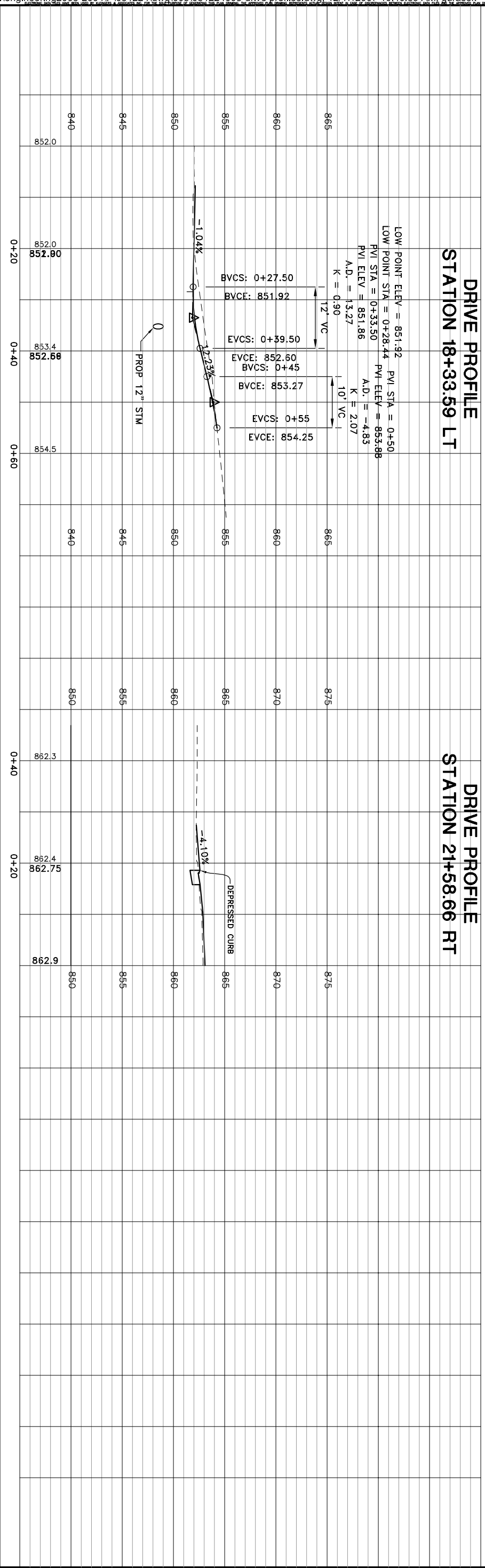


**DRIVE PROFILE
STATION 18+33.59 LT**

**DRIVE PROFILE
STATION 21+58.66 RT**



- PAVEMENT COMPOSITION FOR DRIVEWAYS**
- RESIDENTIAL ASPHALT DRIVEWAY APPROACH
 - 448 - 1-1/4" ASPHALT CONCRETE, SURFACE COURSE, TYPE 1, PG64-22
 - 301 - 4" ASPHALT CONCRETE BASE, PG64-22
 - 204 - SUBGRADE COMPACTION
 - RESIDENTIAL CONCRETE DRIVEWAY APPROACH
 - 452 - 6" NON-REINFORCED CONCRETE PAVEMENT
 - 204 - SUBGRADE COMPACTION