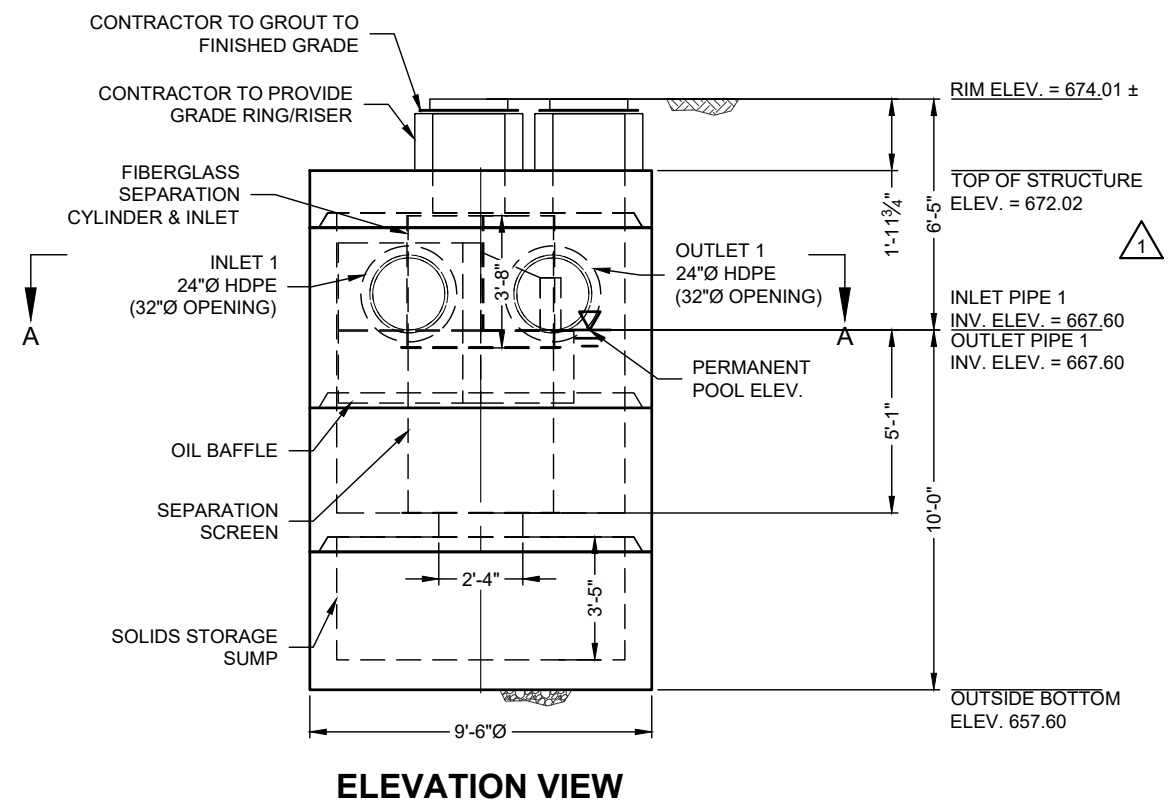
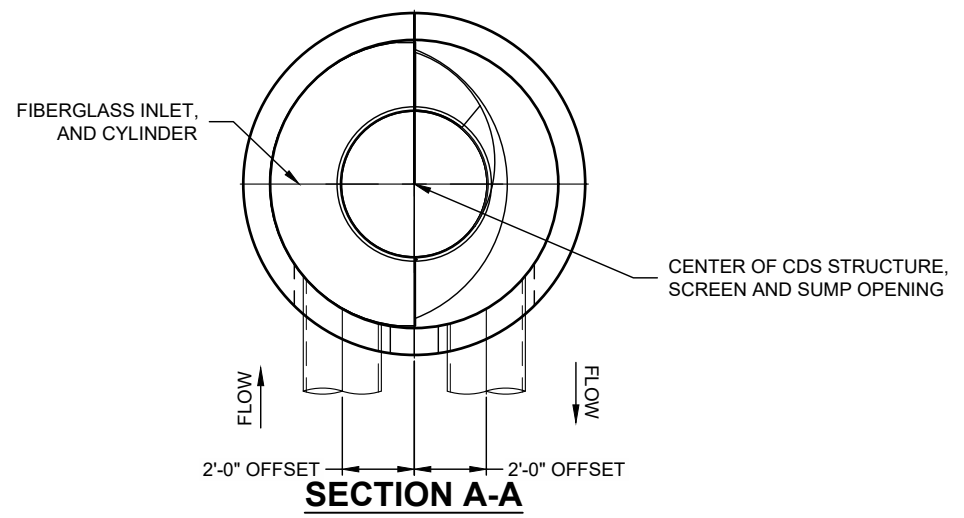
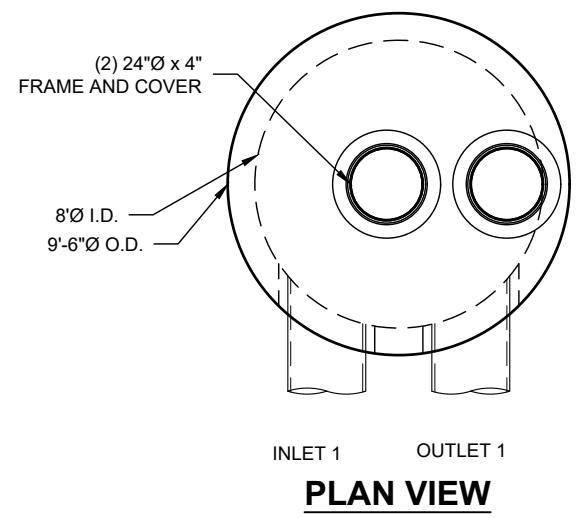


INTERNAL COMPONENTS TO BE INSTALLED ON SITE BY CONTECH FIELD CONSULTANT. PLEASE CONTACT CONTECH FOR CURRENT INSTALLATION LEAD TIME.



**MATERIAL LIST (PROVIDED BY CONTECH)**

COUNT	DESCRIPTION	INSTALLED BY
1	FIBERGLASS INLET AND CYLINDER	CONTECH
1	2400 micron, 4' O.D. x 4.58' SEP. SCREEN	CONTECH
1	HARDWARE KIT	CONTECH
1	SEALANT FOR JOINTS	CONTRACTOR
2	24"Ø x 4" FRAME & COVER, EJ#41600389, OR EQUIV.	CONTRACTOR

**GENERAL NOTES**

- CONTECH TO PROVIDE ALL MATERIALS UNLESS NOTED OTHERWISE.
- FOR FABRICATION DRAWINGS WITH DETAILED STRUCTURE DIMENSIONS AND WEIGHT, PLEASE CONTACT YOUR CONTECH ENGINEERED SOLUTIONS LLC REPRESENTATIVE. [www.ContechES.com](http://www.ContechES.com)
- CDS WATER QUALITY STRUCTURE SHALL BE IN ACCORDANCE WITH ALL DESIGN DATA AND INFORMATION CONTAINED IN THIS DRAWING. CONTRACTOR TO CONFIRM STRUCTURE MEETS REQUIREMENTS OF PROJECT.
- STRUCTURE SHALL MEET AASHTO HS-25 LOAD RATING, ASSUMING EARTH COVER OF 0' - 2', AND GROUNDWATER ELEVATION AT, OR BELOW, THE OUTLET PIPE INVERT ELEVATION. ENGINEER OF RECORD TO CONFIRM ACTUAL GROUNDWATER ELEVATION. CASTINGS SHALL MEET AASHTO M306 AND BE CAST WITH THE CONTECH LOGO.
- IF REQUIRED, PVC HYDRAULIC SHEAR PLATE IS PLACED ON SHELF AT BOTTOM OF SCREEN CYLINDER. REMOVE AND REPLACE AS NECESSARY DURING MAINTENANCE CLEANING.
- CDS STRUCTURE SHALL BE PRECAST CONCRETE CONFORMING TO ASTM C-478 AND AASHTO LOAD FACTOR DESIGN METHOD.

**INSTALLATION NOTES**

- ANY SUB-BASE, BACKFILL DEPTH, AND/OR ANTI-FLOTATION PROVISIONS ARE SITE-SPECIFIC DESIGN CONSIDERATIONS AND SHALL BE SPECIFIED BY ENGINEER OF RECORD.
- CONTRACTOR TO PROVIDE EQUIPMENT WITH SUFFICIENT LIFTING AND REACH CAPACITY TO LIFT AND SET THE CDS MANHOLE STRUCTURE.
- CONTRACTOR TO INSTALL JOINT SEALANT BETWEEN ALL STRUCTURE SECTIONS AND ASSEMBLE STRUCTURE.
- CONTRACTOR TO PROVIDE, INSTALL, AND GROUT INLET AND OUTLET PIPE(S). MATCH PIPE INVERTS WITH ELEVATIONS SHOWN. ALL PIPE CENTERLINES TO MATCH PIPE OPENING CENTERLINES.
- CONTRACTOR TO TAKE APPROPRIATE MEASURES TO ASSURE UNIT IS WATER TIGHT, HOLDING WATER TO FLOWLINE INVERT MINIMUM. IT IS SUGGESTED THAT ALL JOINTS BELOW PIPE INVERTS ARE GROUTED.

**STRUCTURE WEIGHT**

APPROXIMATE HEAVIEST PICK = 19500 LBS.  
STRUCTURE IS DELIVERED IN 4 PIECES

MAX FOOTPRINT = Ø9'-6"



The design and information shown on this drawing is the property of CONTECH ENGINEERED SOLUTIONS LLC. It is to be used only for the project and location specified. No part of this drawing may be reproduced, stored in a retrieval system, or transmitted in any form or by any means, electronic, mechanical, photocopying, recording, or by any information storage and retrieval system, without the prior written consent of CONTECH. Failure to comply with these terms and conditions shall constitute a breach of contract and shall result in the user's own risk and CONTECH expressly disclaims any liability or responsibility for such use. If discrepancies between the supplied information upon which the drawing is based and actual field conditions are encountered as the work progresses, the user is encouraged to immediately contact CONTECH for re-evaluation of the design. CONTECH immediately disclaims any liability or responsibility for design, construction, or performance of the work if the user accepts no liability for design based on missing, incomplete or inaccurate information supplied by others.

MARK	DATE	REVISION DESCRIPTION	BY
1	3/31/22	REVISED TOS & IES	MSB

CDS4045-8-C - 697986-20  
CRESCENTVILLE RD. WIDENING  
CINCINNATI, OH  
for SYSTEM: TYPE 4 WQU

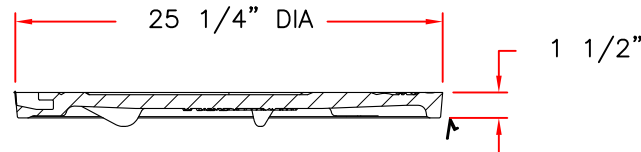
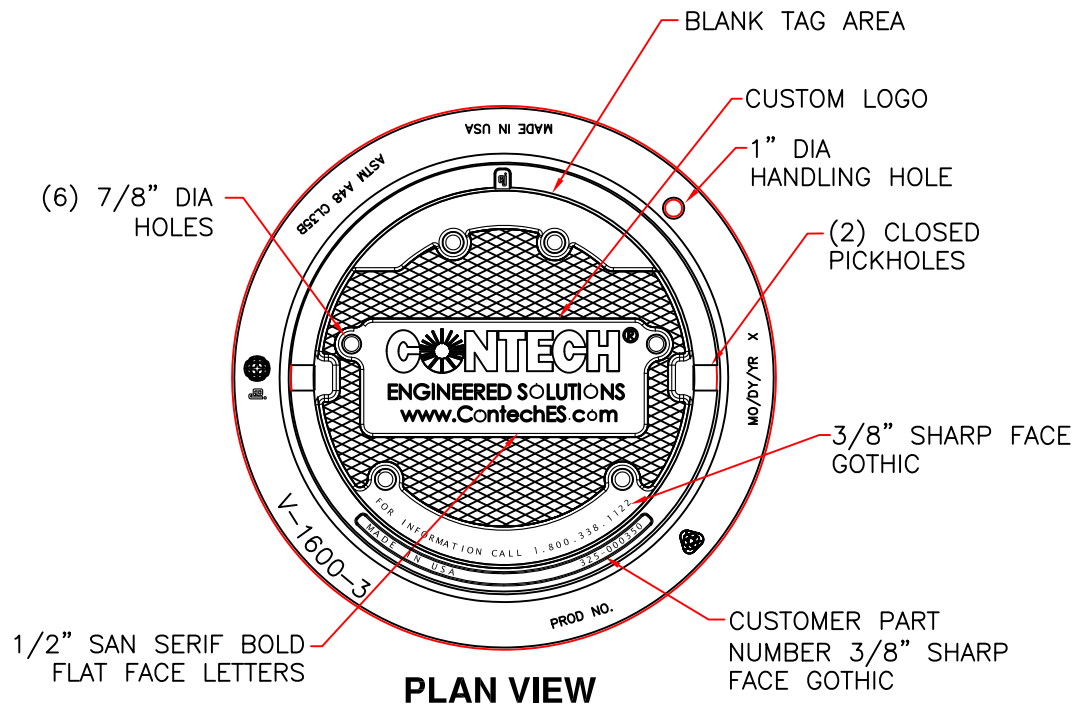
CONTECH ENGINEERED SOLUTIONS LLC  
www.ContechES.com  
9025 Centre Pointe Dr., Suite 400, West Chester, OH 45069  
800-338-1122 513-445-7000 513-445-7983 FAX

DATE:	03/21/22	SCALE:	3/16" = 1'-0"
DESIGNED:	MSB	DRAWN:	MSB
CHECKED:	TNB	APPROVED:	MSB
PROJECT No.:	697986	SEQUENCE No.:	20
SHEET:	1	OF	1

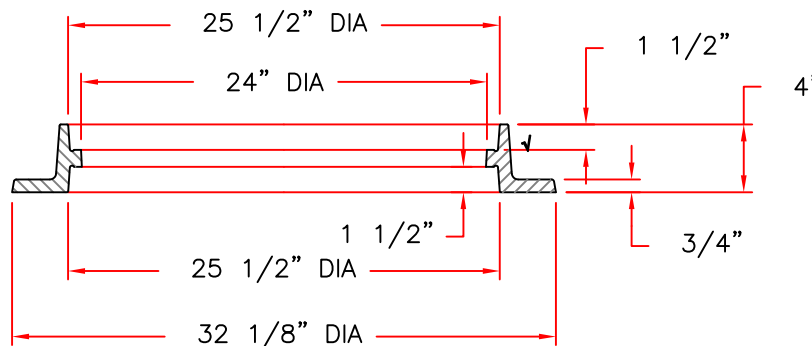
NCI LAYOUT 1A  
4045-8-FGIS  
5824 / 453502

I:\WERLIN\PROJECT\ACTIVE\6979001\697986\20-CDS\DRAWINGS\697986-20-CDS4045-8 CONFAB.DWG 3/31/2022 11:46 AM

# V1600-3 V1610-3 Assembly



**COVER SECTION**



**RING SECTION**

**Product Number**  
41600389

**Design Features**

- Materials
  - Frame  
Gray Iron (CL35B)
  - Cover  
Gray Iron (CL35B)

- Design Load  
Heavy Duty
- Open Area  
n/a
- Coating  
Undipped
- √ Designates Machined Surface

**Certification**

- ASTM A48
- Country of Origin: USA

**Major Components**

- 41600310
- 41600374

**Drawing Revision**

- 05/02/2008 Designer: DEW
- 6/20/2017 Revised By: DAE

**Disclaimer**

Weights (lbs./kg) dimensions (inches/mm) and drawings provided for your guidance. We reserve the right to modify specifications without prior notice.

CONFIDENTIAL: This drawing is the property of EJ GROUP, Inc., and embodies confidential information, registered marks, patents, trade secret information, and/or know how that is the property of EJ GROUP, Inc. Copyright © 2012 EJ GROUP, Inc. All rights reserved.

**Contact**

800 626 4653  
ejco.com