

PROJECT INFORMATION	
ENGINEERED PRODUCT MANAGER:	KEVIN HENDRICKSON 513-497-9953 KEVIN.HENDRICKSON@ADSPIPE.COM
ADS SALES REP:	JUSTIN MEYER 513-325-9139 JUSTIN.MEYER@ADSPIPE.COM
PROJECT NO:	S339404



PRINCETON ROAD BUT-CR18-6.87

FAIRFIELD, OH

BAYSAVER BARRACUDA SPECIFICATIONS

MATERIALS AND DESIGN

CONCRETE STRUCTURES: DESIGNED FOR H-20 TRAFFIC LOADING AND APPLICABLE SOIL LOADS OR AS OTHERWISE DETERMINED BY A LICENSED PROFESSIONAL ENGINEER. THE MATERIALS AND STRUCTURAL DESIGN OF THE DEVICES SHALL BE PER ASTM C857 AND ASTM C858.

48" HP MANHOLE STRUCTURES: MADE FROM AN IMPACT MODIFIED COPOLYMER POLYPROPYLENE MEETING THE MATERIAL REQUIREMENTS OF ASTM F2764. THE ECCENTRIC CONE REDUCER SHALL BE MANUFACTURED FROM POLYETHYLENE MATERIAL MEETING ASTM D3350 CELL CLASS 213320C. GASKETS SHALL BE MADE OF MATERIAL MEETING THE REQUIREMENTS OF ASTM F477.

SEPARATOR INTERNALS SHALL BE SUBSTANTIALLY CONSTRUCTED OF STAINLESS STEEL, POLYETHYLENE, OR OTHER THERMOPLASTIC MATERIAL APPROVED BY THE MANUFACTURER.

PERFORMANCE

THE STORMWATER TREATMENT UNIT SHALL BE AN INLINE UNIT CAPABLE OF CONVEYING 100% OF THE DESIGN PEAK FLOW. IF PEAK FLOW RATES EXCEED MAXIMUM HYDRAULIC RATE, THE UNIT SHALL BE INSTALLED OFFLINE.

THE STORMWATER TREATMENT UNIT INTERNALS SHALL CONSIST OF (1)SEPARATOR CONE ASSEMBLY, AND (1)SUMP ASSEMBLY WHICH INCLUDES(4) LEGS WITH "TEETH".

THE BARRACUDA UNIT SHALL BE DESIGNED TO REMOVE AT LEAST 80% OF THE SUSPENDED SOLIDS ON AN ANNUAL AGGREGATE REMOVAL BASIS. SAID REMOVAL SHALL BE BASED ON FULL-SCALE THIRD PARTY TESTING USING OK-110 MEDIA GRADATION OR EQUIVALENT AND 300 mg/L INFLUENT CONCENTRATION. SAID FULL SCALE TESTING SHALL HAVE INCLUDED SEDIMENT CAPTURE BASED ON ACTUAL TOTAL MASS COLLECTED BY THE STORMWATER TREATMENT UNIT.

-OR-

THE BARRACUDA UNIT SHALL BE DESIGNED TO REMOVE AT LEAST 50% OF TSS USING A MEDIA MIX WITH $d_{50}=75$ MICRON AND 200 MG/L INFLUENT CONCENTRATION.

-OR-

THE BARRACUDA UNIT SHALL BE DESIGNED TO REMOVE AT LEAST 50% OF TSS PER CURRENT NJDEP/NJCAT HDS PROTOCOL .

MANUFACTURER

EACH STORMWATER TREATMENT SYSTEM SHALL BE A BARRACUDA SYSTEM AS MANUFACTURED BY BAYSAVER, LLC, 1030 DEER HOLLOW DR., MOUNT AIRY, MD 21771, PHONE (301) 829-6470, FAX (301) 829-3747, TOLL FREE 1-800-229-7283 (1-800-BAYSAVER), EMAIL INFO@BAYSAVER.COM

BARRACUDA MAINTENANCE

BARRACUDA SYSTEMS MUST BE INSPECTED AND MAINTAINED PERIODICALLY. INSPECTION IS MADE BY CHECKING THE DEPTH OF SEDIMENT IN EACH MANHOLE WITH A GRADE STICK OR SIMILAR DEVICE. MAINTENANCE IS REQUIRED WHEN THE SEDIMENT DEPTH IN EXCEEDS 20 INCHES. MINIMUM INSPECTION IS RECOMMENDED TWICE A YEAR TO MAINTAIN OPERATION AND FUNCTION OF THE UNIT.

MAINTENANCE INSTRUCTIONS

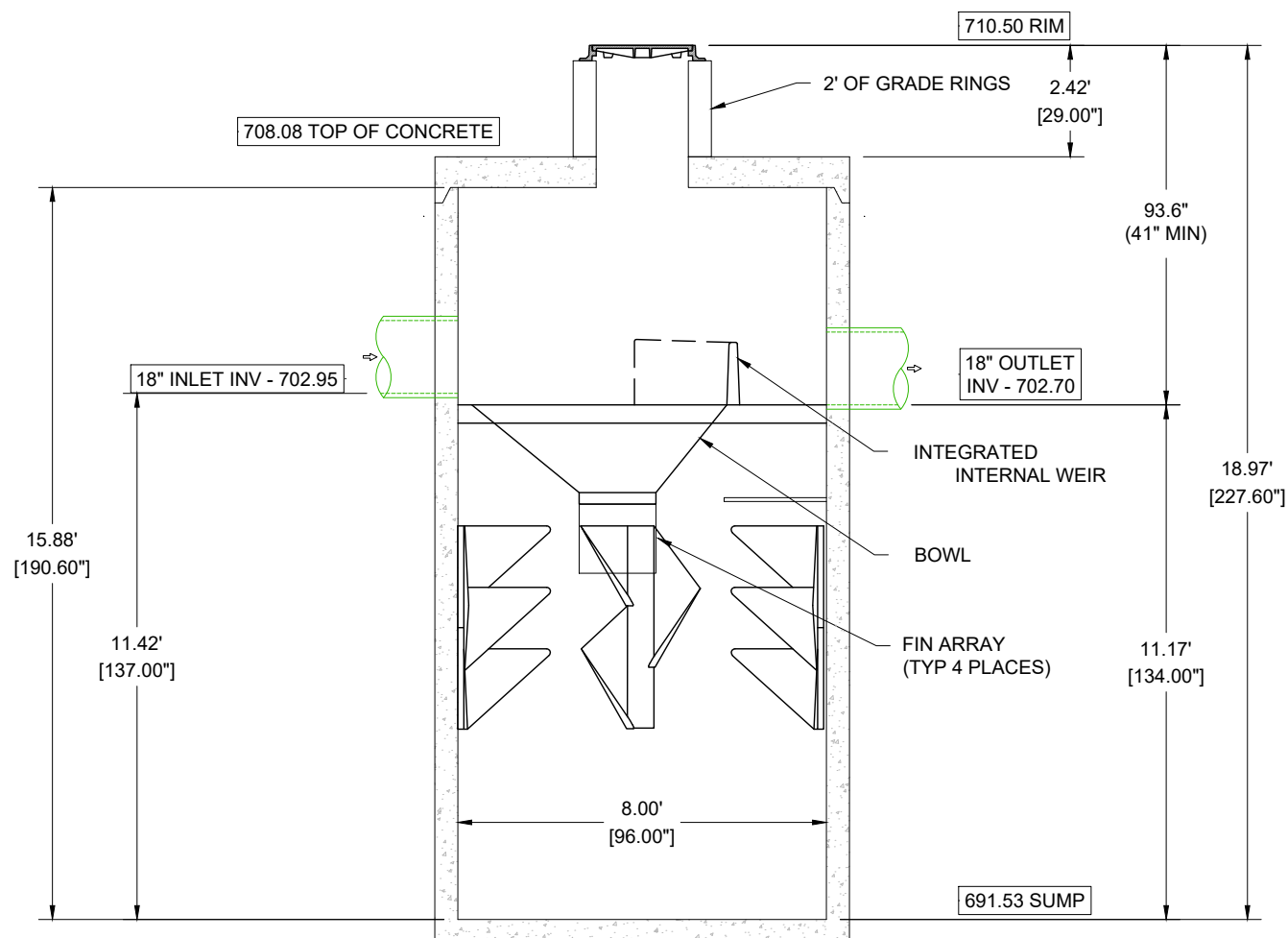
1. REMOVE THE MANHOLE COVER TO PROVIDE ACCESS TO THE POLLUTANT STORAGE. POLLUTANTS ARE STORED IN THE SUMP, BELOW THE BOWL ASSEMBLY VISIBLE FROM THE SURFACE. YOU'LL ACCESS THIS AREA THROUGH THE 10" DIAMETER ACCESS CYLINDER.
2. USE A VACUUM TRUCK OR OTHER SIMILAR EQUIPMENT TO REMOVE ALL WATER, DEBRIS, OILS AND SEDIMENT.
3. USE A HIGH PRESSURE HOSE TO CLEAN THE MANHOLE OF ALL THE REMAINING SEDIMENT AND DEBRIS. THEN, USE THE VACUUM TRUCK TO REMOVE THE WATER.
4. FILL THE CLEANED MANHOLE WITH WATER UNTIL THE LEVEL REACHES THE INVERT OF THE OUTLET PIPE.
5. REPLACE THE MANHOLE COVER.
6. DISPOSE OF THE POLLUTED WATER, OILS, SEDIMENT AND TRASH AT AN APPROVED FACILITY.
 - LOCAL REGULATIONS PROHIBIT THE DISCHARGE OF SOLID MATERIAL INTO THE SANITARY SYSTEM. CHECK WITH THE LOCAL SEWER AUTHORITY FOR AUTHORITY TO DISCHARGE THE LIQUID.
 - SOME LOCALITIES TREAT THE POLLUTANTS AS LEACHATE. CHECK WITH LOCAL REGULATORS ABOUT DISPOSAL REQUIREMENTS.
 - ADDITIONAL LOCAL REGULATIONS MAY APPLY TO THE MAINTENANCE PROCEDURE.

BARRACUDA INSTALLATION NOTES

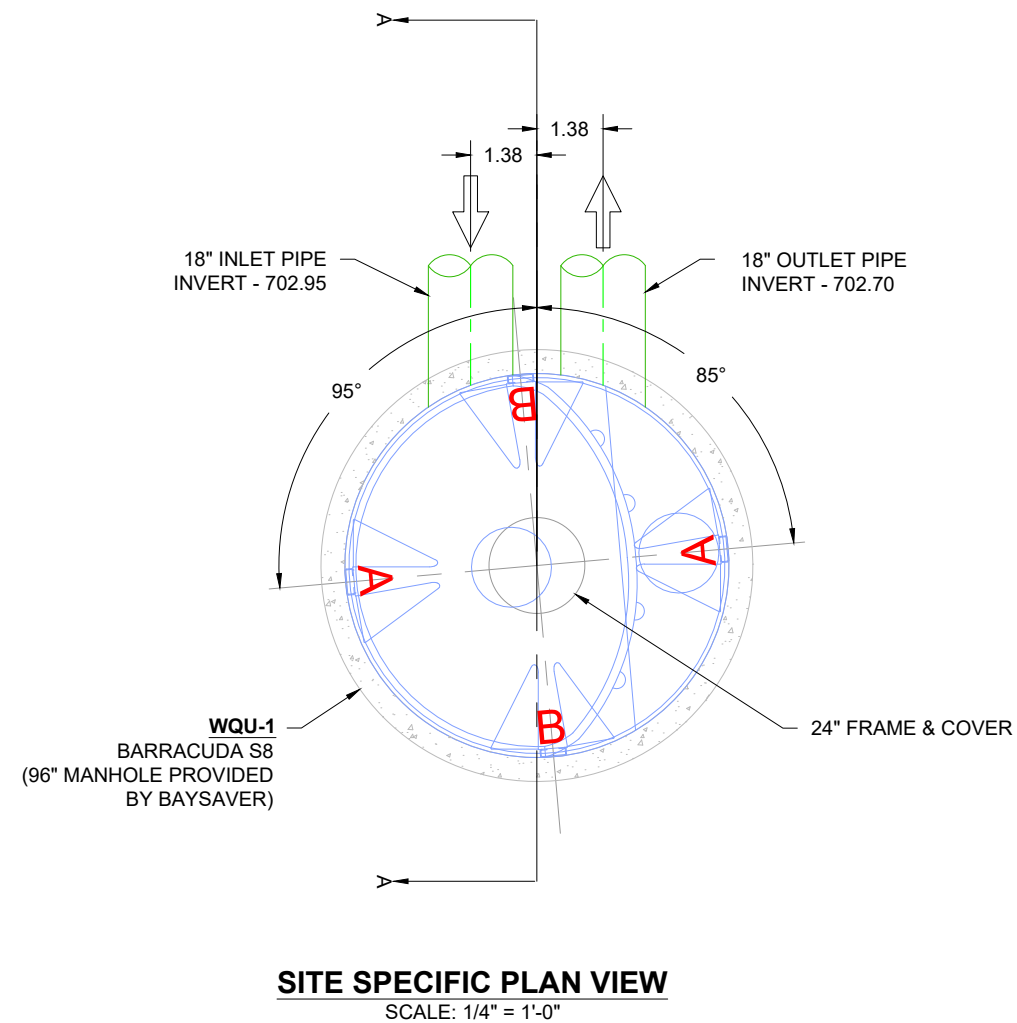
INSTALLATION OF THE STORMWATER TREATMENT UNIT(S) SHALL BE PERFORMED PER MANUFACTURER'S INSTALLATION INSTRUCTIONS. SUCH INSTRUCTIONS CAN BE OBTAINED BY CALLING ADVANCED DRAINAGE SYSTEMS AT (800) 821-6710 OR BY LOGGING ON TO WWW.ADS-PIPE.COM OR WWW.BAYSAVER.COM.

PRODUCT SPECIFICATIONS

- THE STORMWATER TREATMENT UNIT SHALL BE AN INLINE UNIT CAPABLE OF CONVEYING 100% OF THE DESIGN PEAK FLOW. IF PEAK FLOW RATES EXCEED MAXIMUM HYDRAULIC RATE, THE UNIT SHALL BE INSTALLED OFFLINE.
- THE BARRACUDA UNIT SHALL BE DESIGNED TO REMOVE AT LEAST 80% OF THE SUSPENDED SOLIDS ON AN ANNUAL AGGREGATE REMOVAL BASIS. SAID REMOVAL SHALL BE BASED ON FULL-SCALE THIRD PARTY TESTING USING OK-110 MEDIA GRADATION OR EQUIVALENT AND 300 mg/L INFLUENT CONCENTRATION. SAID FULL SCALE TESTING SHALL HAVE INCLUDED SEDIMENT CAPTURE BASED ON ACTUAL TOTAL MASS COLLECTED BY THE STORMWATER TREATMENT UNIT.
 - OR-
 - THE BARRACUDA UNIT SHALL BE DESIGNED TO REMOVE AT LEAST 50% OF TSS USING A MEDIA MIX WITH d_{50} =75 MICRON AND 200 MG/L INFLUENT CONCENTRATION.
 - OR-
 - THE BARRACUDA UNIT SHALL BE DESIGNED TO REMOVE AT LEAST 50% OF TSS PER CURRENT NJDEP/NJCAT HDS PROTOCOL .



SECTION VIEW A-A
SCALE: 1/4" = 1'-0"



SITE SPECIFIC PLAN VIEW
SCALE: 1/4" = 1'-0"

BARRACUDA S8	
UNIT ID	WQU-1
PEAK FLOW RATE (CFS)	**
TREATMENT FLOW RATE (CFS)	6.08

PRINCETON ROAD	
BUT-CR18-6.87	
FAIRFIELD, OH	
DATE:	2/21/23
DRAWN:	BMW
PROJECT #:	S339404
CHECKED:	KLJ

DATE	DRWN	CHKD	DESCRIPTION
4/12/23	BMW	MDG	ELEVATION UPDATES
03-31-2023	NSL	JEK	REVISED INVERTS PER MARKUPS PROVIDED

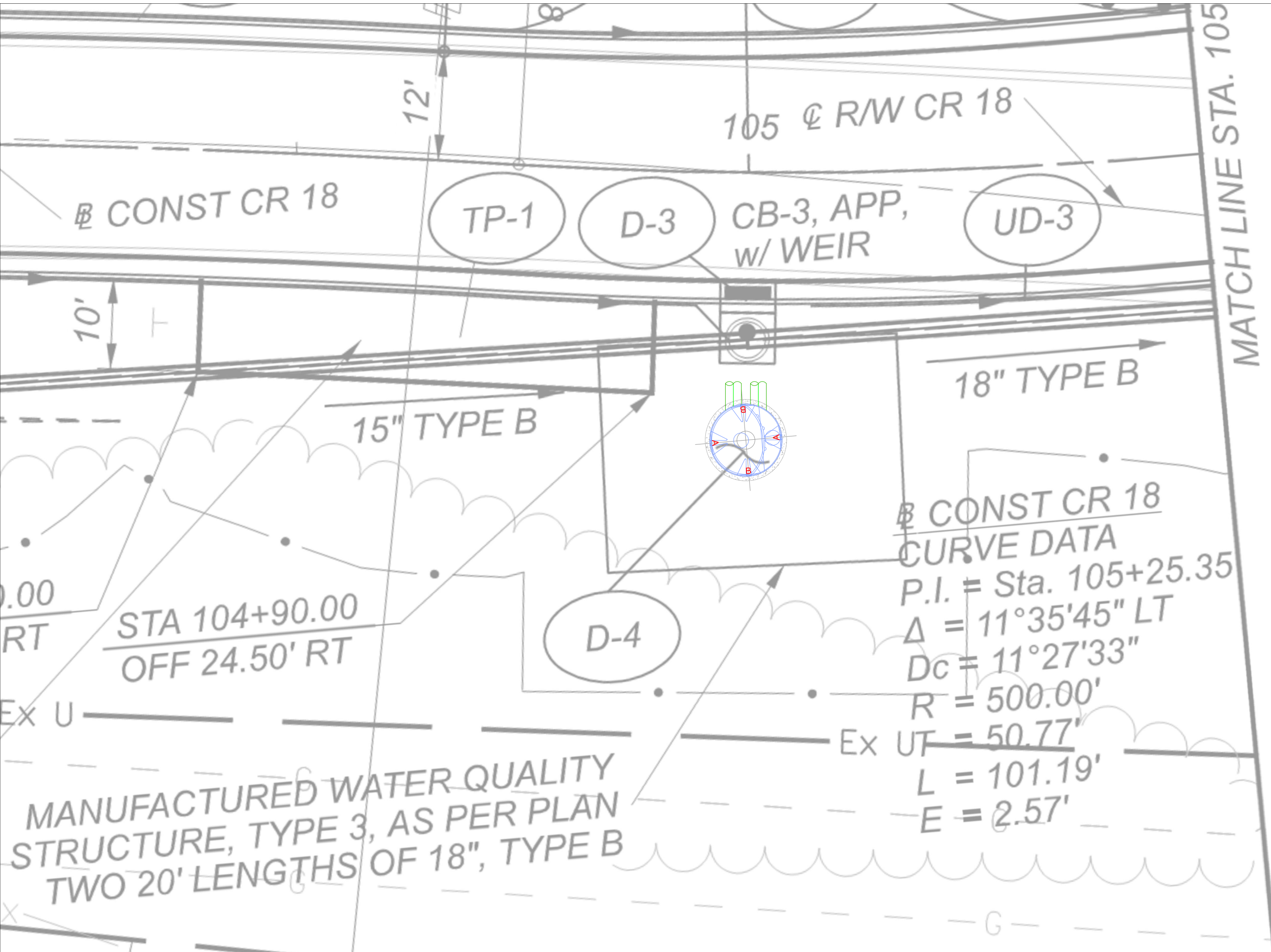
Barracuda Max
Stormwater Separator

4640 TRUEJMAN BLVD
HILLIARD, OH 43026

ADS

AS NOTED

THIS DRAWING HAS BEEN PREPARED BASED ON INFORMATION PROVIDED TO ADS UNDER THE DIRECTION OF THE SITE DESIGN ENGINEER OR OTHER PROJECT REPRESENTATIVE. THE SITE DESIGN ENGINEER SHALL REVIEW THIS DRAWING PRIOR TO CONSTRUCTION. IT IS THE ULTIMATE RESPONSIBILITY OF THE SITE DESIGN ENGINEER TO ENSURE THAT THE PRODUCT(S) DEPICTED AND ALL ASSOCIATED DETAILS MEET ALL APPLICABLE LAWS, REGULATIONS, AND PROJECT REQUIREMENTS.



CONST CR 18

105 @ R/W CR 18

TP-1

D-3

CB-3, APP,
W/ WEIR

UD-3

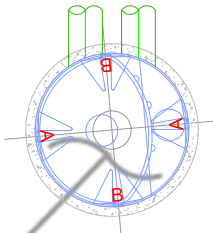
MATCH LINE STA. 105

10'

12'

15" TYPE B

18" TYPE B



CONST CR 18
CURVE DATA

P.I. = Sta. 105+25.35

$\Delta = 11^\circ 35' 45''$ LT

$D_c = 11^\circ 27' 33''$

$R = 500.00'$

Ex UT = 50.77'

$L = 101.19'$

$E = 2.57'$

D-4

STA 104+90.00
OFF 24.50' RT

0.00
RT

Ex U

MANUFACTURED WATER QUALITY
STRUCTURE, TYPE 3, AS PER PLAN
TWO 20' LENGTHS OF 18", TYPE B

