

From: Sunesis Construction
2610 Crescentville Rd.
West Chester, OH 45069
513-326-6000

Date: 07/31/19
Project Name: BCEO - Hamilton Mason Rd @ Gilmore Rd Roundabout
Project #: BUT-CR21-1.31
Submittal #: 001

To: David Quimby, P.E., S.I.
Butler County Engineer's Office
BCEO
1921 Fairgrove Avenue (S.R. 4)
Hamilton, OH 45011-1965

Submittal Status (New or Prior)	Item Identification & Description	Location In Contract Documents		Alternate to Spec. (Yes or No)
		Drawing No.	Spec. Section	
New	Water Quality Structure	50/50	895	N

Additional Comments / Description / Clarification:

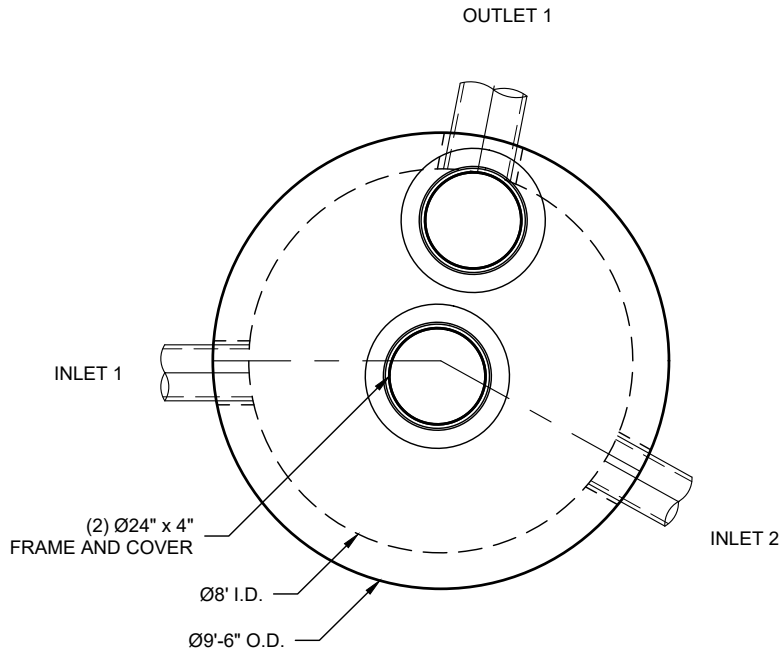
Sunesis requests this submittal be expedited to facilitate procurement for materials needed due to long lead times.

CONTRACTOR CERTIFICATION AND OWNER / ENGINEERS COMMENTS

CONTRACTOR

OWNER / ENGINEER / ARCHITECT

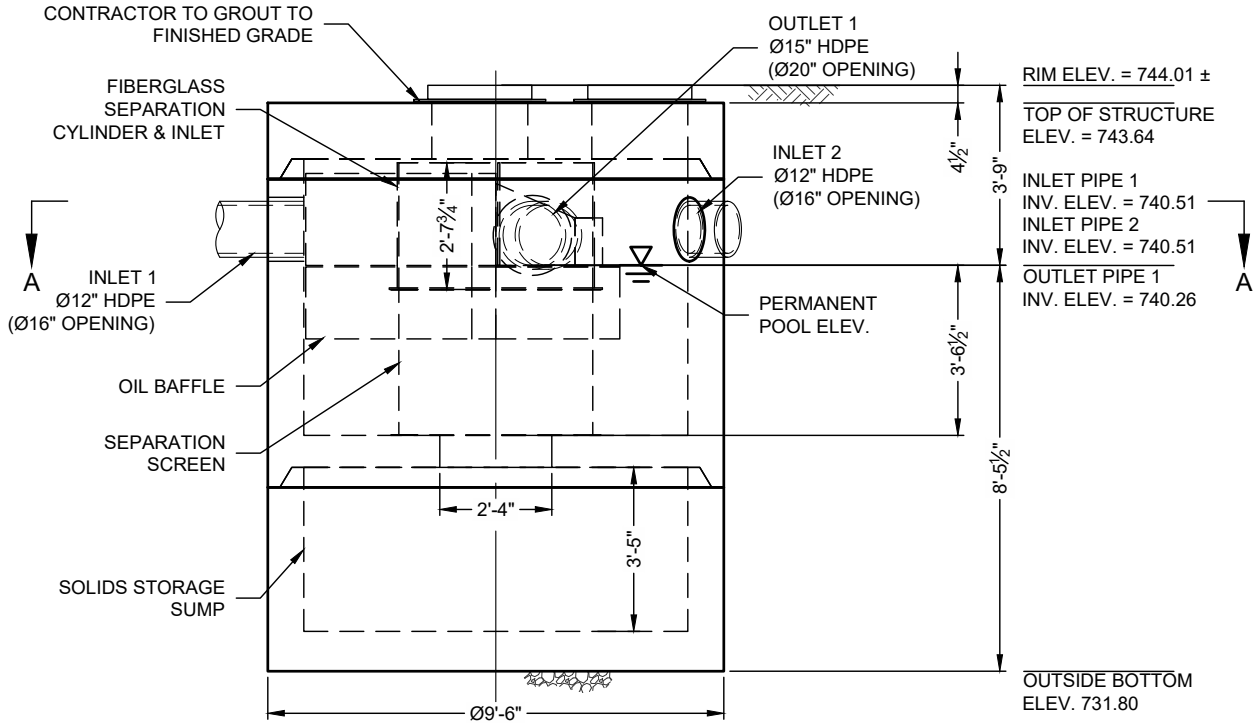
<p>Sunesis Construction Company</p> <p>Manufacturer: Contech</p> <p>Supplier: Ferguson Waterworks</p> <p>Reviewed: X</p> <p>Date: 7/31/19</p> <p>By: <i>Justin Shan</i></p> <p>Comments: Please Expedite Review</p>	<p>Butler County Engineers Office</p>
---	---------------------------------------



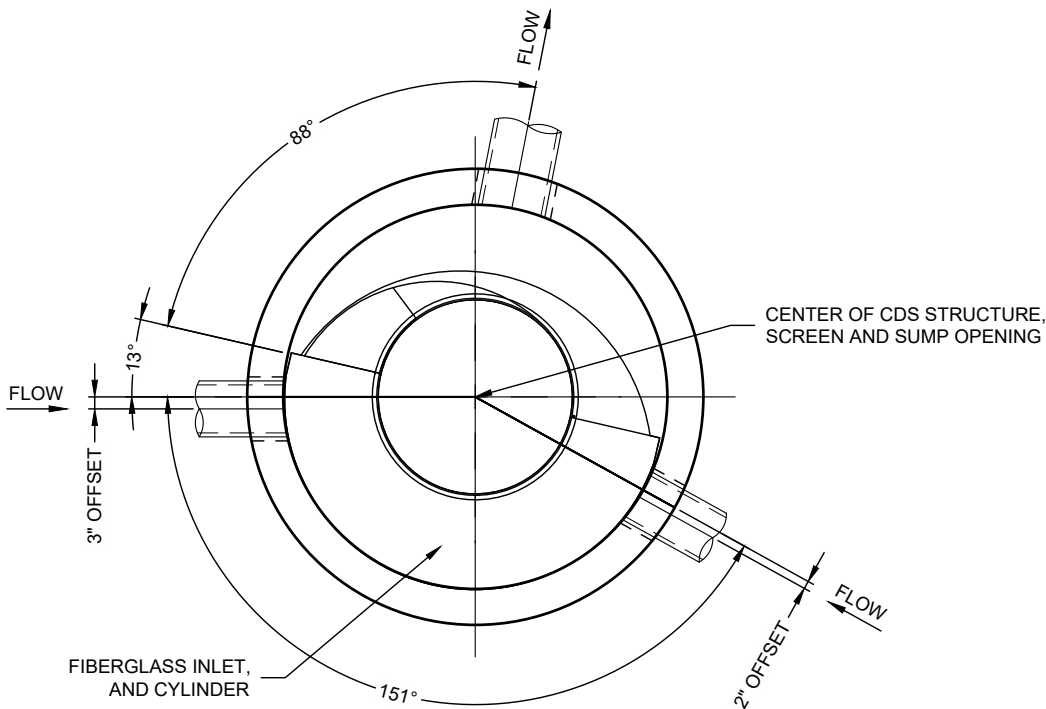
PLAN VIEW

• INTERNAL COMPONENTS TO BE INSTALLED BY CONTECH FIELD CONSULTANT ON SITE

~~• STRUCTURE SHALL BE INSPECTED AND APPROVED BY DOT PRIOR TO DELIVERY~~



ELEVATION VIEW



SECTION A-A

MATERIAL LIST (PROVIDED BY CONTECH)

COUNT	DESCRIPTION	INSTALLED BY
1	FIBERGLASS INLET AND CYLINDER	CONTECH
1	2400 micron, 4' O.D. x 3.04' SEP. SCREEN	CONTECH
1	SEALANT FOR JOINTS (BY PRECASTER)	CONTRACTOR
2	Ø24" x 4" FRAME & COVER, EJ#41600389, OR EQUIV.	CONTRACTOR

GENERAL NOTES

- CONTECH TO PROVIDE ALL MATERIALS UNLESS NOTED OTHERWISE.
- FOR FABRICATION DRAWINGS WITH DETAILED STRUCTURE DIMENSIONS AND WEIGHT, PLEASE CONTACT YOUR CONTECH ENGINEERED SOLUTIONS LLC REPRESENTATIVE. www.ContechES.com
- CDS WATER QUALITY STRUCTURE SHALL BE IN ACCORDANCE WITH ALL DESIGN DATA AND INFORMATION CONTAINED IN THIS DRAWING. CONTRACTOR TO CONFIRM STRUCTURE MEETS REQUIREMENTS OF PROJECT.
- STRUCTURE SHALL MEET AASHTO HS-20 LOAD RATING, ASSUMING EARTH COVER OF 0' - 2', AND GROUNDWATER ELEVATION AT, OR BELOW, THE OUTLET PIPE INVERT ELEVATION. ENGINEER OF RECORD TO CONFIRM ACTUAL GROUNDWATER ELEVATION. CASTINGS SHALL MEET AASHTO M306 AND BE CAST WITH THE CONTECH LOGO.
- IF REQUIRED, PVC HYDRAULIC SHEAR PLATE IS PLACED ON SHELF AT BOTTOM OF SCREEN CYLINDER. REMOVE AND REPLACE AS NECESSARY DURING MAINTENANCE CLEANING.
- CDS STRUCTURE SHALL BE PRECAST CONCRETE CONFORMING TO ASTM C-478 AND AASHTO LOAD FACTOR DESIGN METHOD.

INSTALLATION NOTES

- ANY SUB-BASE, BACKFILL DEPTH, AND/OR ANTI-FLOTATION PROVISIONS ARE SITE-SPECIFIC DESIGN CONSIDERATIONS AND SHALL BE SPECIFIED BY ENGINEER OF RECORD.
- CONTRACTOR TO PROVIDE EQUIPMENT WITH SUFFICIENT LIFTING AND REACH CAPACITY TO LIFT AND SET THE CDS MANHOLE STRUCTURE.
- CONTRACTOR TO INSTALL JOINT SEALANT BETWEEN ALL STRUCTURE SECTIONS AND ASSEMBLE STRUCTURE.
- CONTRACTOR TO PROVIDE, INSTALL, AND GROUT INLET AND OUTLET PIPE(S). MATCH PIPE INVERTS WITH ELEVATIONS SHOWN. ALL PIPE CENTERLINES TO MATCH PIPE OPENING CENTERLINES.
- CONTRACTOR TO TAKE APPROPRIATE MEASURES TO ASSURE UNIT IS WATER TIGHT, HOLDING WATER TO FLOWLINE INVERT MINIMUM. IT IS SUGGESTED THAT ALL JOINTS BELOW PIPE INVERTS ARE GROUTED.



STRUCTURE WEIGHT

APPROXIMATE HEAVIEST PICK = 26000 LBS.
STRUCTURE IS DELIVERED IN 3 PIECES

MAX FOOTPRINT = Ø9'-6"

CONTECH
CONTRACT
DRAWING

NCI
LAYOUT 1A
4030-8-FGIS
5824 / NORW10

<div><div><div>CONTECH® ENGINEERED SOLUTIONS LLC</div></div><div><div><div>GDS®</div></div><div><div><p>THIS PRODUCT MAY BE PROTECTED BY ONE OR MORE OF THE FOLLOWING U.S. PATENTS: 7,810,000; 7,810,001; 7,810,002; 7,810,003; 7,810,004; 7,810,005; 7,810,006; 7,810,007; 7,810,008; 7,810,009; 7,810,010; 7,810,011; 7,810,012; 7,810,013; 7,810,014; 7,810,015; 7,810,016; 7,810,017; 7,810,018; 7,810,019; 7,810,020; 7,810,021; 7,810,022; 7,810,023; 7,810,024; 7,810,025; 7,810,026; 7,810,027; 7,810,028; 7,810,029; 7,810,030; 7,810,031; 7,810,032; 7,810,033; 7,810,034; 7,810,035; 7,810,036; 7,810,037; 7,810,038; 7,810,039; 7,810,040; 7,810,041; 7,810,042; 7,810,043; 7,810,044; 7,810,045; 7,810,046; 7,810,047; 7,810,048; 7,810,049; 7,810,050; 7,810,051; 7,810,052; 7,810,053; 7,810,054; 7,810,055; 7,810,056; 7,810,057; 7,810,058; 7,810,059; 7,810,060; 7,810,061; 7,810,062; 7,810,063; 7,810,064; 7,810,065; 7,810,066; 7,810,067; 7,810,068; 7,810,069; 7,810,070; 7,810,071; 7,810,072; 7,810,073; 7,810,074; 7,810,075; 7,810,076; 7,810,077; 7,810,078; 7,810,079; 7,810,080; 7,810,081; 7,810,082; 7,810,083; 7,810,084; 7,810,085; 7,810,086; 7,810,087; 7,810,088; 7,810,089; 7,810,090; 7,810,091; 7,810,092; 7,810,093; 7,810,094; 7,810,095; 7,810,096; 7,810,097; 7,810,098; 7,810,099; 7,810,100; 7,810,101; 7,810,102; 7,810,103; 7,810,104; 7,810,105; 7,810,106; 7,810,107; 7,810,108; 7,810,109; 7,810,110; 7,810,111; 7,810,112; 7,810,113; 7,810,114; 7,810,115; 7,810,116; 7,810,117; 7,810,118; 7,810,119; 7,810,120; 7,810,121; 7,810,122; 7,810,123; 7,810,124; 7,810,125; 7,810,126; 7,810,127; 7,810,128; 7,810,129; 7,810,130; 7,810,131; 7,810,132; 7,810,133; 7,810,134; 7,810,135; 7,810,136; 7,810,137; 7,810,138; 7,810,139; 7,810,140; 7,810,141; 7,810,142; 7,810,143; 7,810,144; 7,810,145; 7,810,146; 7,810,147; 7,810,148; 7,810,149; 7,810,150; 7,810,151; 7,810,152; 7,810,153; 7,810,154; 7,810,155; 7,810,156; 7,810,157; 7,810,158; 7,810,159; 7,810,160; 7,810,161; 7,810,162; 7,810,163; 7,810,164; 7,810,165; 7,810,166; 7,810,167; 7,810,168; 7,810,169; 7,810,170; 7,810,171; 7,810,172; 7,810,173; 7,810,174; 7,810,175; 7,810,176; 7,810,177; 7,810,178; 7,810,179; 7,810,180; 7,810,181; 7,810,182; 7,810,183; 7,810,184; 7,810,185; 7,810,186; 7,810,187; 7,810,188; 7,810,189; 7,810,190; 7,810,191; 7,810,192; 7,810,193; 7,810,194; 7,810,195; 7,810,196; 7,810,197; 7,810,198; 7,810,199; 7,810,200; 7,810,201; 7,810,202; 7,810,203; 7,810,204; 7,810,205; 7,810,206; 7,810,207; 7,810,208; 7,810,209; 7,810,210; 7,810,211; 7,810,212; 7,810,213; 7,810,214; 7,810,215; 7,810,216; 7,810,217; 7,810,218; 7,810,219; 7,810,220; 7,810,221; 7,810,222; 7,810,223; 7,810,224; 7,810,225; 7,810,226; 7,810,227; 7,810,228; 7,810,229; 7,810,230; 7,810,231; 7,810,232; 7,810,233; 7,810,234; 7,810,235; 7,810,236; 7,810,237; 7,810,238; 7,810,239; 7,810,240; 7,810,241; 7,810,242; 7,810,243; 7,810,244; 7,810,245; 7,810,246; 7,810,247; 7,810,248; 7,810,249; 7,810,250; 7,810,251; 7,810,252; 7,810,253; 7,810,254; 7,810,255; 7,810,256; 7,810,257; 7,810,258; 7,810,259; 7,810,260; 7,810,261; 7,810,262; 7,810,263; 7,810,264; 7,810,265; 7,810,266; 7,810,267; 7,810,268; 7,810,269; 7,810,270; 7,810,271; 7,810,272; 7,810,273; 7,810,274; 7,810,275; 7,810,276; 7,810,277; 7,810,278; 7,810,279; 7,810,280; 7,810,281; 7,810,282; 7,810,283; 7,810,284; 7,810,285; 7,810,286; 7,810,287; 7,810,288; 7,810,289; 7,810,290; 7,810,291; 7,810,292; 7,810,293; 7,810,294; 7,810,295; 7,810,296; 7,810,297; 7,810,298; 7,810,299; 7,810,300; 7,810,301; 7,810,302; 7,810,303; 7,810,304; 7,810,305; 7,810,306; 7,810,307; 7,810,308; 7,810,309; 7,810,310; 7,810,311; 7,810,312; 7,810,313; 7,810,314; 7,810,315; 7,810,316; 7,810,317; 7,810,318; 7,810,319; 7,810,320; 7,810,321; 7,810,322; 7,810,323; 7,810,324; 7,810,325; 7,810,326; 7,810,327; 7,810,328; 7,810,329; 7,810,330; 7,810,331; 7,810,332; 7,810,333; 7,810,334; 7,810,335; 7,810,336; 7,810,337; 7,810,338; 7,810,339; 7,810,340; 7,810,341; 7,810,342; 7,810,343; 7,810,344; 7,810,345; 7,810,346; 7,810,347; 7,810,348; 7,810,349; 7,810,350; 7,810,351; 7,810,352; 7,810,353; 7,810,354; 7,810,355; 7,810,356; 7,810,357; 7,810,358; 7,810,359; 7,810,360; 7,810,361; 7,810,362; 7,810,363; 7,810,364; 7,810,365; 7,810,366; 7,810,367; 7,810,368; 7,810,369; 7,810,370; 7,810,371; 7,810,372; 7,810,373; 7,810,374; 7,810,375; 7,810,376; 7,810,377; 7,810,378; 7,810,379; 7,810,380; 7,810,381; 7,810,382; 7,810,383; 7,810,384; 7,810,385; 7,810,386; 7,810,387; 7,810,388; 7,810,389; 7,810,390; 7,810,391; 7,810,392; 7,810,393; 7,810,394; 7,810,395; 7,810,396; 7,810,397; 7,810,398; 7,810,399; 7,810,400; 7,810,401; 7,810,402; 7,810,403; 7,810,404; 7,810,405; 7,810,406; 7,810,407; 7,810,408; 7,810,409; 7,810,410; 7,810,411; 7,810,412; 7,810,413; 7,810,414; 7,810,415; 7,810,416; 7,810,417; 7,810,418; 7,810,419; 7,810,420; 7,810,421; 7,810,422; 7,810,423; 7,810,424; 7,810,425; 7,810,426; 7,810,427; 7,810,428; 7,810,429; 7,810,430; 7,810,431; 7,810,432; 7,810,433; 7,810,434; 7,810,435; 7,810,436; 7,810,437; 7,810,438; 7,810,439; 7,810,440; 7,810,441; 7,810,442; 7,810,443; 7,810,444; 7,810,445; 7,810,446; 7,810,447; 7,810,448; 7,810,449; 7,810,450; 7,810,451; 7,810,452; 7,810,453; 7,810,454; 7,810,455; 7,810,456; 7,810,457; 7,810,458; 7,810,459; 7,810,460; 7,810,461; 7,810,462; 7,810,463; 7,810,464; 7,810,465; 7,810,466; 7,810,467; 7,810,468; 7,810,469; 7,810,470; 7,810,471; 7,810,472; 7,810,473; 7,810,474; 7,810,475; 7,810,476; 7,810,477; 7,810,478; 7,810,479; 7,810,480; 7,810,481; 7,810,482; 7,810,483; 7,810,484; 7,810,485; 7,810,486; 7,810,487; 7,810,488; 7,810,489; 7,810,490; 7,810,491; 7,810,492; 7,810,493; 7,810,494; 7,810,495; 7,810,496; 7,810,497; 7,810,498; 7,810,499; 7,810,500; 7,810,501; 7,810,502; 7,810,503; 7,810,504; 7,810,505; 7,810,506; 7,810,507; 7,810,508; 7,810,509; 7,810,510; 7,810,511; 7,810,512; 7,810,513; 7,810,514; 7,810,515; 7,810,516; 7,810,517; 7,810,518; 7,810,519; 7,810,520; 7,810,521; 7,810,522; 7,810,523; 7,810,524; 7,810,525; 7,810,526; 7,810,527; 7,810,528; 7,810,529; 7,810,530; 7,810,531; 7,810,532; 7,810,533; 7,810,534; 7,810,535; 7,810,536; 7,810,537; 7,810,538; 7,810,539; 7,810,540; 7,810,541; 7,810,542; 7,810,543; 7,810,544; 7,810,545; 7,810,546; 7,810,547; 7,810,548; 7,810,549; 7,810,550; 7,810,551; 7,810,552; 7,810,553; 7,810,554; 7,810,555; 7,810,556; 7,810,557; 7,810,558; 7,810,559; 7,810,560; 7,810,561; 7,810,562; 7,810,563; 7,810,564; 7,810,565; 7,810,566; 7,810,567; 7,810,568; 7,810,569; 7,810,570; 7,810,571; 7,810,572; 7,810,573; 7,810,574; 7,810,575; 7,810,576; 7,810,577; 7,810,578; 7,810,579; 7,810,580; 7,810,581; 7,810,582; 7,810,583; 7,810,584; 7,810,585; 7,810,586; 7,810,587; 7,810,588; 7,810,589; 7,810,590; 7,810,591; 7,810,592; 7,810,593; 7,810,594; 7,810,595; 7,810,596; 7,810,597; 7,810,598; 7,810,599; 7,810,600; 7,810,601; 7,810,602; 7,810,603; 7,810,604; 7,810,605; 7,810,606; 7,810,607; 7,810,608; 7,810,609; 7,810,610; 7,810,611; 7,810,612; 7,810,613; 7,810,614; 7,810,615; 7,810,616; 7,810,617; 7,810,618; 7,810,619; 7,810,620; 7,810,621; 7,810,622; 7,810,623; 7,810,624; 7,810,625; 7,810,626; 7,810,627; 7,810,628; 7,810,629; 7,810,630; 7,810,631; 7,810,632; 7,810,633; 7,810,634; 7,810,635; 7,810,636; 7,810,637; 7,810,638; 7,810,639; 7,810,640; 7,810,641; 7,810,642; 7,810,643; 7,810,644; 7,810,645; 7,810,646; 7,810,647; 7,810,648; 7,810,649; 7,810,650; 7,810,651; 7,810,652; 7,810,653; 7,810,654; 7,810,655; 7,810,656; 7,810,657; 7,810,658; 7,810,659; 7,810,660; 7,810,661; 7,810,662; 7,810,663; 7,810,664; 7,810,665; 7,810,666; 7,810,667; 7,810,668; 7,810,669; 7,810,670; 7,810,671; 7,810,672; 7,810,673; 7,810,674; 7,810,675; 7,810,676; 7,810,677; 7,810,678; 7,810,679; 7,810,680; 7,810,681; 7,810,682; 7,810,683; 7,810,684; 7,810,685; 7,810,686; 7,810,687; 7,810,688; 7,810,689; 7,810,690; 7,810,691; 7,810,692; 7,810,693; 7,810,694; 7,810,695; 7,810,696; 7,810,697; 7,810,698; 7,810,699; 7,810,700; 7,810,701; 7,810,702; 7,810,703; 7,810,704; 7,810,705; 7,810,706; 7,810,707; 7,810,708; 7,810,709; 7,810,710; 7,810,711; 7,810,712; 7,810,713; 7,810,714; 7,810,715; 7,810,716; 7,810,717; 7,810,718; 7,810,719; 7,810,720; 7,810,721; 7,810,722; 7,810,723; 7,810,724; 7,810,725; 7,810,726; 7,810,727; 7,810,728; 7,810,729; 7,810,730; 7,810,731; 7,810,732; 7,810,733; 7,810,734; 7,810,735; 7,810,736; 7,810,737; 7,810,738; 7,810,739; 7,810,740; 7,810,741; 7,810,742; 7,810,743; 7,810,744; 7,810,745; 7,810,746; 7,810,747; 7,810,748; 7,810,749; 7,810,750; 7,810,751; 7,810,752; 7,810,753; 7,810,754; 7,810,755; 7,810,756; 7,810,757; 7,810,758; 7,810,759; 7,810,760; 7,810,761; 7,810,762; 7,810,763; 7,810,764; 7,810,765; 7,810,766; 7,810,767; 7,810,768; 7,810,769; 7,810,770; 7,810,771; 7,810,772; 7,810,773; 7,810,774; 7,810,775; 7,810,776; 7,810,777; 7,810,778; 7,810,779; 7,810,780; 7,810,781; 7,810,782; 7,810,783; 7,810,784; 7,810,785; 7,810,786; 7,810,787; 7,810,788; 7,810,789; 7,810,790; 7,810,791; 7,810,792; 7,810,793; 7,810,794; 7,810,795; 7,810,796; 7,810,797; 7,810,798; 7,810,799; 7,810,800; 7,810,801; 7,810,802; 7,810,803; 7,810,804; 7,810,805; 7,810,806; 7,810,807; 7,810,808; 7,810,809; 7,810,810; 7,810,811; 7,810,812; 7,810,813; 7,810,814; 7,810,815; 7,810,816; 7,810,817; 7,810,818; 7,810,819; 7,810,820; 7,810,821; 7,810,822; 7,810,823; 7,810,824; 7,810,825; 7,810,826; 7,810,827; 7,810,828; 7,810,829; 7,810,830; 7,810,831; 7,810,832; 7,810,833; 7,810,834; 7,810,835; 7,810,836; 7,810,837; 7,810,838; 7,810,839; 7,810,840; 7,810,841; 7,810,842; 7,810,843; 7,810,844; 7,810,845; 7,810,846; 7,810,847; 7,810,848; 7,810,849; 7,810,850; 7,810,851; 7,810,852; 7,810,853; 7,810,854; 7,810,855; 7,810,856; 7,810,857; 7,810,858; 7,810,859; 7,810,860; 7,810,861; 7,810,862; 7,810,863; 7,810,864; 7,810,865; 7,810,866; 7,810,867; 7,810,868; 7,810,869; 7,810,870; 7,810,871; 7,810,872; 7,810,873; 7,810,874; 7,810,875; 7,810,876; 7,810,877; 7,810,878; 7,810,879; 7,810,880; 7,810,881; 7,810,882; 7,810,883; 7,810,884; 7,810,885; 7,810,886; 7,810,887; 7,810,888; 7,810,889; 7,810,890; 7,810,891; 7,810,892; 7,810,893; 7,810,894; 7,810,895; 7,810,896; 7,810,897; 7,810,898; 7,810,899; 7,810,900; 7,810,901; 7,810,902; 7,810,903; 7,810,904; 7,810,905; 7,810,906; 7,810,907; 7,810,908; 7,810,909; 7,810,910; 7,810,911; 7,810,912; 7,810,913; 7,810,914; 7,810,915; 7,810,916; 7,810,917; 7,810,918; 7,810,919; 7,810,920; 7,810,921; 7,810,922; 7,810,923; 7,810,924; 7,810,925; 7,810,926; 7,810,927; 7,810,928; 7,810,929; 7,810,930; 7,810,931; 7,810,932; 7,810,933; 7,810,934; 7,810,935; 7,810,936; 7,810,937; 7,810,938; 7,810,939; 7,810,940; 7,810,941; 7,810,942; 7,810,943; 7,810,944; 7,810,945; 7,810,946; 7,810,947; 7,810,948; 7,810,949; 7,810,950; 7,810,951; 7,810,952; 7,810,953; 7,810,954; 7,810,955; 7,810,956; 7,810,957; 7,810,958; 7,810,959; 7,810,960; 7,810,961; 7,810,962; 7,810,963; 7,810,964; 7,810,965; 7,810,966; 7,810,967; 7,810,968; 7,810,969; 7,810,970; 7,810,971; 7,810,972; 7,810,973; 7,810,974; 7,810,975; 7,810,976; 7,810,977; 7,810,978; 7,810,979; 7,810,980; 7,810,981; 7,810,982; 7,810,983; 7,810,984; 7,810,985; 7,810,986; 7,810,987; 7,810,988; 7,810,989; 7,810,990; 7,810,991; 7,810,992; 7,810,993; 7,810,994; 7,810,995; 7,810,996; 7,810,997; 7,810,998; 7,810,999; 7,811,000; 7,811,001; 7,811,002; 7,811,003; 7,811,004; 7,811,005; 7,811,006; 7,811,007; 7,811,008; 7,811,009; 7,811,010; 7,811,011; 7,811,012; 7,811,013; 7,811,014; 7,811,015; 7,811,016; 7,811,017; 7,811,018; 7,811,019; 7,811,020; 7,811,021; 7,811,022; 7,811,023; 7,811,024; 7,811,025; 7,811,026; 7,811,027; 7,811,028; 7,811,029; 7,811,030; 7,811,031; 7,811,032; 7,811,033; 7,811,034; 7,811,035; 7,811,036; 7,811,037; 7,811,038; 7,811,039; 7,811,040; 7,811,041; 7,811,042; 7,811,043; 7,811,044; 7,811,045; 7,811,046; 7,811,047; 7,811,048; 7,811,049; 7,811,050; 7,811,051; 7,811,052; 7,811,053; 7,811,054; 7,811,055; 7,811,056; 7,811,057; 7,811,058; 7,811,059; 7,811,060; 7,811,061; 7,811,062; 7,811,063; 7,811,064; 7,811,065; 7,811,066; 7,811,067; 7,811,068; 7,811,069; 7,811,070; 7,811,071; 7,811,072; 7,811,073; 7,811,074; 7,811,075; 7,811,076; 7,811,077; 7,811,078; 7,811,079; 7,811,080; 7,811,081; 7,811,082; 7,811,083; 7,811,084; 7,811,085; 7,811,086; 7,811,087; 7,811,088; 7,811,089; 7,811,090; 7,811,091; 7,811,092; 7,811,093; 7,811,094; 7,811,095; 7,811,096; 7,811,097; 7,811,098; 7,811,099; 7,811,100; 7,811,101; 7,811,102; 7,811,103; 7,811,104; 7,811,105; 7,811,106; 7,811,107; 7,811,108; 7,811,109; 7,811,110; 7,811,111; 7,811,112; 7,811,113; 7,81</p></div></div></div></div>	
---	--

V1600-3 V1610-3 Assembly



Product Number

41600389

Design Features

-Materials

Frame

Gray Iron (CL35B)

Cover

Gray Iron (CL35B)

-Design Load

Heavy Duty

-Open Area

n/a

-Coating

Undipped

- ✓ Designates Machined Surface

Certification

-ASTM A48

-Country of Origin:USA

Major Components

41600310

41600374

Drawing Revision

05/02/2008 Designer: DEW

6/20/2017 Revised By: DAE

Disclaimer

Weights (lbs./kg) dimensions (inches/mm)
and drawings provided for your guidance. We
reserve the right to modify specifications without
prior notice.

CONFIDENTIAL: This drawing is the property of EJ GROUP, Inc., and embodies confidential information, registered marks, patents, trade secret information, and/or know how that is the property of EJ GROUP, Inc. Copyright © 2012 EJ GROUP, Inc. All rights reserved.

Contact

800 626 4653

ejco.com

