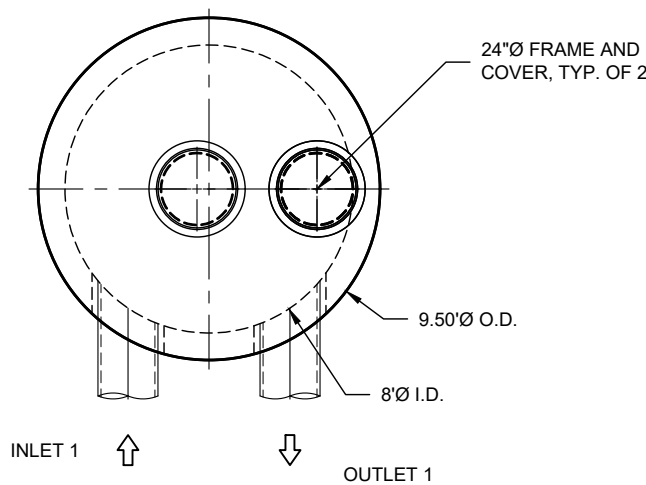
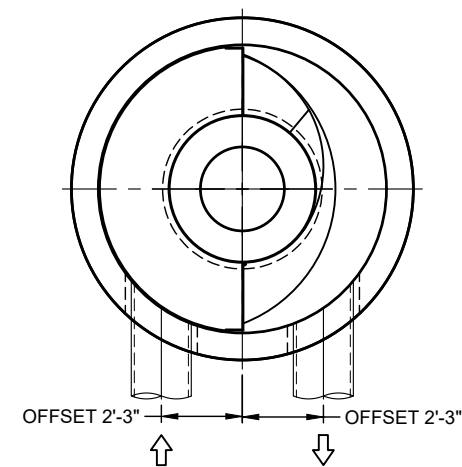


ELEVATION VIEW



PLAN VIEW
INTERNALS NOT SHOWN



PLAN VIEW FOR PIPE ORIENTATION
TOP SLAB NOT SHOWN

MATERIAL LIST (PROVIDED BY CONTECH)

COUNT	DESCRIPTION	INSTALLED BY
1	4045-8 CONCENTRIC FIBERGLASS INSERT	CONTECH
1	4045, 2400 micron, 4.1' O.D. x 4.58' SCREEN, GREEN FLANGE UP	CONTECH
1	20, 30, 40 SERIES HARDWARE KIT	CONTECH
1	SEALANT FOR JOINTS	CONTRACTOR
2	24"Ø X 4" FRAME AND COVER, EJ #41600389, OR EQUIV.	CONTRACTOR

GENERAL NOTES

1. CONTECH TO PROVIDE ALL MATERIALS UNLESS NOTED OTHERWISE.
2. FOR FABRICATION DRAWINGS WITH DETAILED STRUCTURE DIMENSIONS AND WEIGHT, PLEASE CONTACT YOUR CONTECH ENGINEERED SOLUTIONS LLC REPRESENTATIVE. www.ContechES.com
3. CDS WATER QUALITY STRUCTURE SHALL BE IN ACCORDANCE WITH ALL DESIGN DATA AND INFORMATION CONTAINED IN THIS DRAWING. CONTRACTOR TO CONFIRM STRUCTURE MEETS REQUIREMENTS OF PROJECT.
4. STRUCTURE SHALL MEET AASHTO HS-25 LOAD RATING, ASSUMING EARTH COVER OF 0' - 2', AND GROUNDWATER ELEVATION AT, OR BELOW, THE OUTLET PIPE INVERT ELEVATION. ENGINEER OF RECORD TO CONFIRM ACTUAL GROUNDWATER ELEVATION. CASTINGS SHALL MEET AASHTO M306 AND BE CAST WITH THE CONTECH LOGO.
5. IF REQUIRED, PVC HYDRAULIC SHEAR PLATE IS PLACED ON SHELF AT BOTTOM OF SCREEN CYLINDER. REMOVE AND REPLACE AS NECESSARY DURING MAINTENANCE CLEANING.
6. CDS STRUCTURE SHALL BE PRECAST CONCRETE CONFORMING TO ASTM C-478 AND AASHTO LOAD FACTOR DESIGN METHOD.

INSTALLATION NOTES

- A. ANY SUB-BASE, BACKFILL DEPTH, AND/OR ANTI-FLOTATION PROVISIONS ARE SITE-SPECIFIC DESIGN CONSIDERATIONS AND SHALL BE SPECIFIED BY ENGINEER OF RECORD.
- B. CONTRACTOR TO PROVIDE EQUIPMENT WITH SUFFICIENT LIFTING AND REACH CAPACITY TO LIFT AND SET THE CDS MANHOLE STRUCTURE.
- C. CONTRACTOR TO INSTALL JOINT SEALANT BETWEEN ALL STRUCTURE SECTIONS AND ASSEMBLE STRUCTURE.
- D. CONTRACTOR TO PROVIDE, INSTALL, AND GROUT INLET AND OUTLET PIPE(S). MATCH PIPE INVERTS WITH ELEVATIONS SHOWN. ALL PIPE CENTERLINES TO MATCH PIPE OPENING CENTERLINES.
- E. CONTRACTOR TO TAKE APPROPRIATE MEASURES TO ASSURE UNIT IS WATER TIGHT, HOLDING WATER TO FLOWLINE INVERT MINIMUM. IT IS SUGGESTED THAT ALL JOINTS BELOW PIPE INVERTS ARE GROUTED.

STRUCTURE WEIGHT
APPROXIMATE HEAVIEST PICK = 32000 LBS.
STRUCTURE IS DELIVERED IN 4 PIECES

MAX FOOTPRINT = 9.50'Ø

CONTECH
CONTRACT
DRAWING

NCI
LAYOUT 1A

The design and information shown on this drawing is provided as a service to the project owner, engineer and architect. It is not to be used by the project owner or any of its affiliated companies ("CONTECH"). Neither this drawing, nor any part thereof, may be used, reproduced or modified in any manner without the prior written consent of CONTECH. Failure to comply is done at the user's own risk and CONTECH expressly disclaims any liability or responsibility for such use.

Any discrepancies between the supplied information upon which the drawing is based and actual field conditions are encountered as site work progresses, these discrepancies must be reported to CONTECH immediately. CONTECH shall not be held responsible or liable for any errors or omissions in the design or drawings. CONTECH accepts no liability for designs based on incomplete or inaccurate information supplied by others.

CDS4045-8-C - 839121-10
MILLIKIN ROAD AT LESOURDSVILLE,
WEST CHESTER ROAD
HAMILTON, OH
SITE DESIGNATION: MANUFACTURE
SYSTEM TYPE 3

CONTECH[®]
ENGINEERED SOLUTIONS LLC
www.Conteches.com
9100 Centre Pointe Dr., Suite 400, West Chester, OH 45669
800-338-1122 513-645-7000 513-645-7993 FAX

GPS[®]

FOR PATENT INFORMATION, GO TO www.Conteches.com/IP

DATE: 2/14/2025	
DESIGNED: MDB	DRAWN: MDB
CHECKED: CEU	APPROVED: MDB
PROJECT No.: 839121	SEQUENCE No.: 10
SHEET: 1 OF 1	

V1600-3 V1610-3 Assembly



Product Number

41600389

Design Features

-Materials

Frame

Gray Iron (CL35B)

Cover

Gray Iron (CL35B)

-Design Load

Heavy Duty

- Open Area

n/a

-Coating

Undipped

- ✓ Designates Machined Surface

Certification

-ASTM A48

-Country of Origin:USA

Major Components

41600310

41600374

Drawing Revision

05/02/2008 Designer: DEW

6/20/2017 Revised By: DAE

Disclaimer

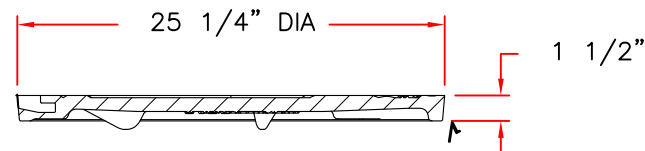
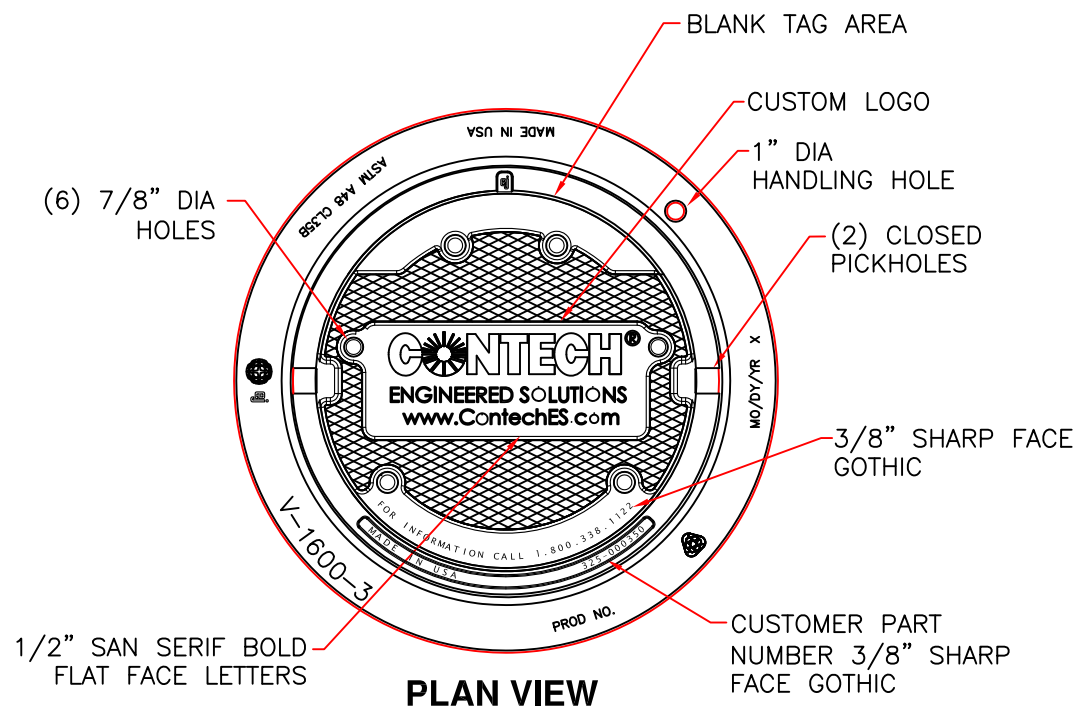
Weights (lbs./kg) dimensions (inches/mm)
and drawings provided for your guidance. We
reserve the right to modify specifications without
prior notice.

CONFIDENTIAL: This drawing is the property of EJ GROUP, Inc., and embodies confidential information, registered marks, patents, trade secret information, and/or know how that is the property of EJ GROUP, Inc. Copyright © 2012 EJ GROUP, Inc. All rights reserved.

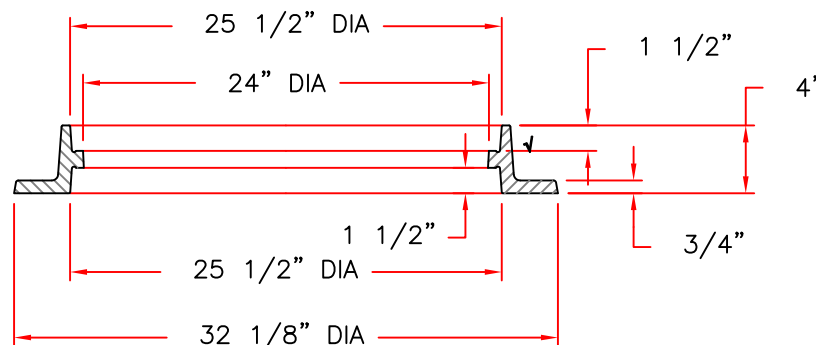
Contact

800 626 4653

ejco.com



COVER SECTION



RING SECTION